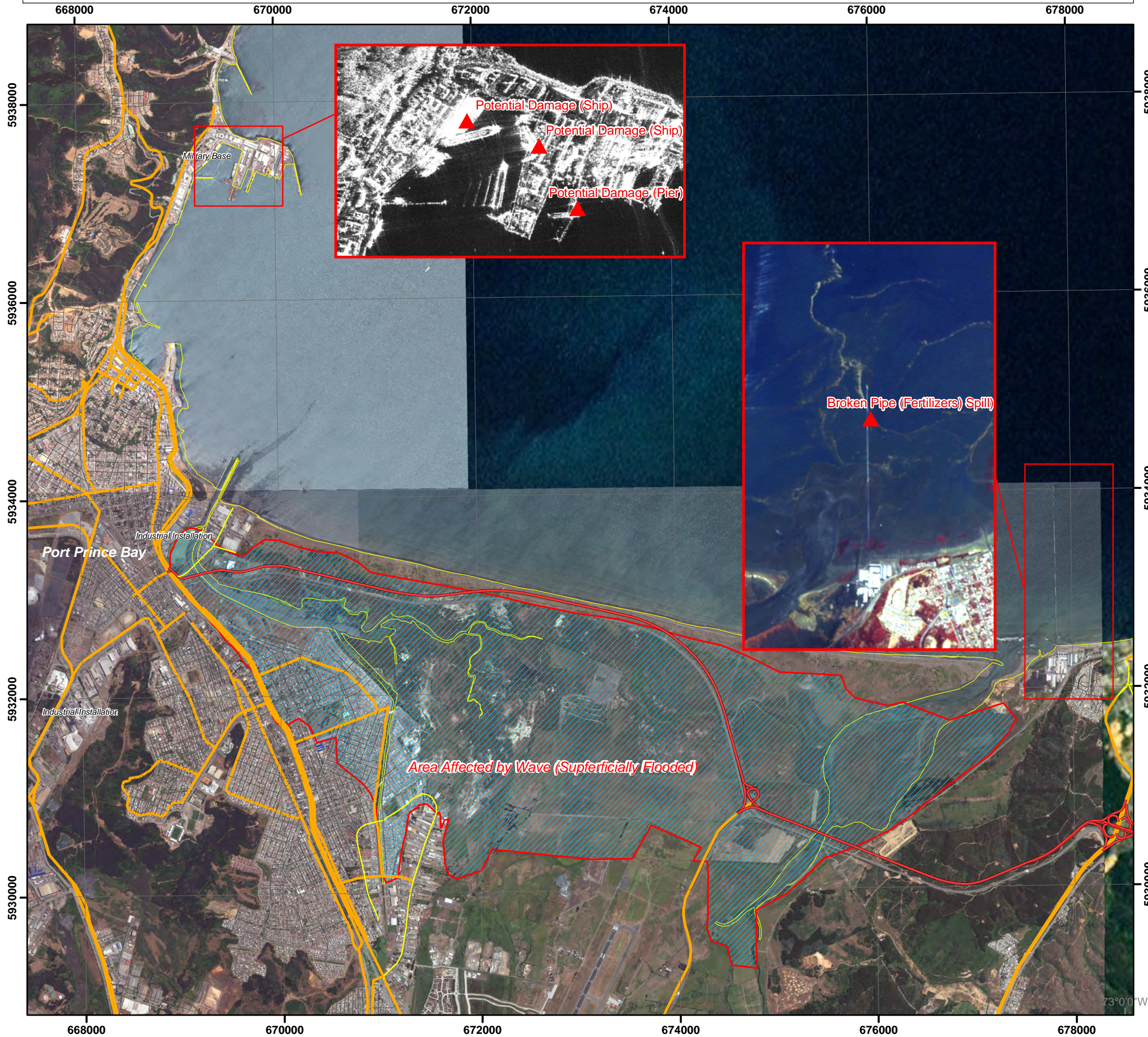


TALCAHUANO, Chile. Preliminary Damage Assessment

RGR002-DMG-01



Projection: Universal Transverse Mercator  
 Zone: ..... 18S  
 Spheroid: ..... WGS84  
 Datum: ..... WGS84

Image: World View - 2. 27th January 2010

G-MOSAIC RGR service activated by:



**Interpretation**  
 This map illustrates a first overview Damage Assessment for the area of Concepción and Talcahuano, Chile. Analysis executed over Rapid Eye 27th February and Como Skymed 28th February, 2010. This Damage Assessment represents only the most obvious damage as, up to date, no Very High Resolution imagery has been acquired due to weather conditions. Image Analysis was performed by the EUSC

**Data sources**  
**Vector data**  
 Urban Atlas of Concepcion by INDRA and EUROSENSE, updated by EUSC.  
 Road Network from OpenStreetMap.  
 Other layers extracted by EUSC.

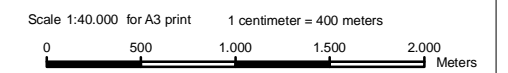
**Background Image Data**  
 Cosmo Skymed 28th February (Radar)  
 Rapid Eye 27th February (5 m. resolution Optical)

G-MOSAIC Users were provided with vector data.

**Talcahuano Damage Assessment**

Damage Assessment    Infrastructure

- Affected Location
- Affected Area
- Highway
- Main Road
- Secondary
- Residential
- Path
- Coastline



This product is covered by the EU Security Regulation 2001/264/EC. Map produced under emergency production protocol. Boundary or naming information implies no endorsement from the producer. The producer accepts no legal responsibility or liability whatsoever with regard to the use of this product.

