



**Director's Update Brief**  
**novel 2009-H1N1**

**Tuesday**  
**21 JUL 2009 0815 EDT**  
**Day 95**

**Week of:**  
**Explaining the burden of disease and aligning**  
**resources**



## Key Events



### novel 2009-H1N1 – 21 JUL 2009

- novel 2009-H1N1 Declarations
  - WHO: Pandemic Phase 6 (11 JUN 2009 1600 EDT)
  - USG: Public Health Emergency declared (26 Apr 2009)
  - HHS: Downgraded to Phase 1 – Awareness (9 May 2009)
  
- US Cases (**as of 16 JUL 2009**)

US TOTALS	CASES	HOSPS	DEATHS
CASES	40,617	4,795	262
SLTTs AFFECTED	55	48	28

\*Majority of states only testing hospitalized cases.

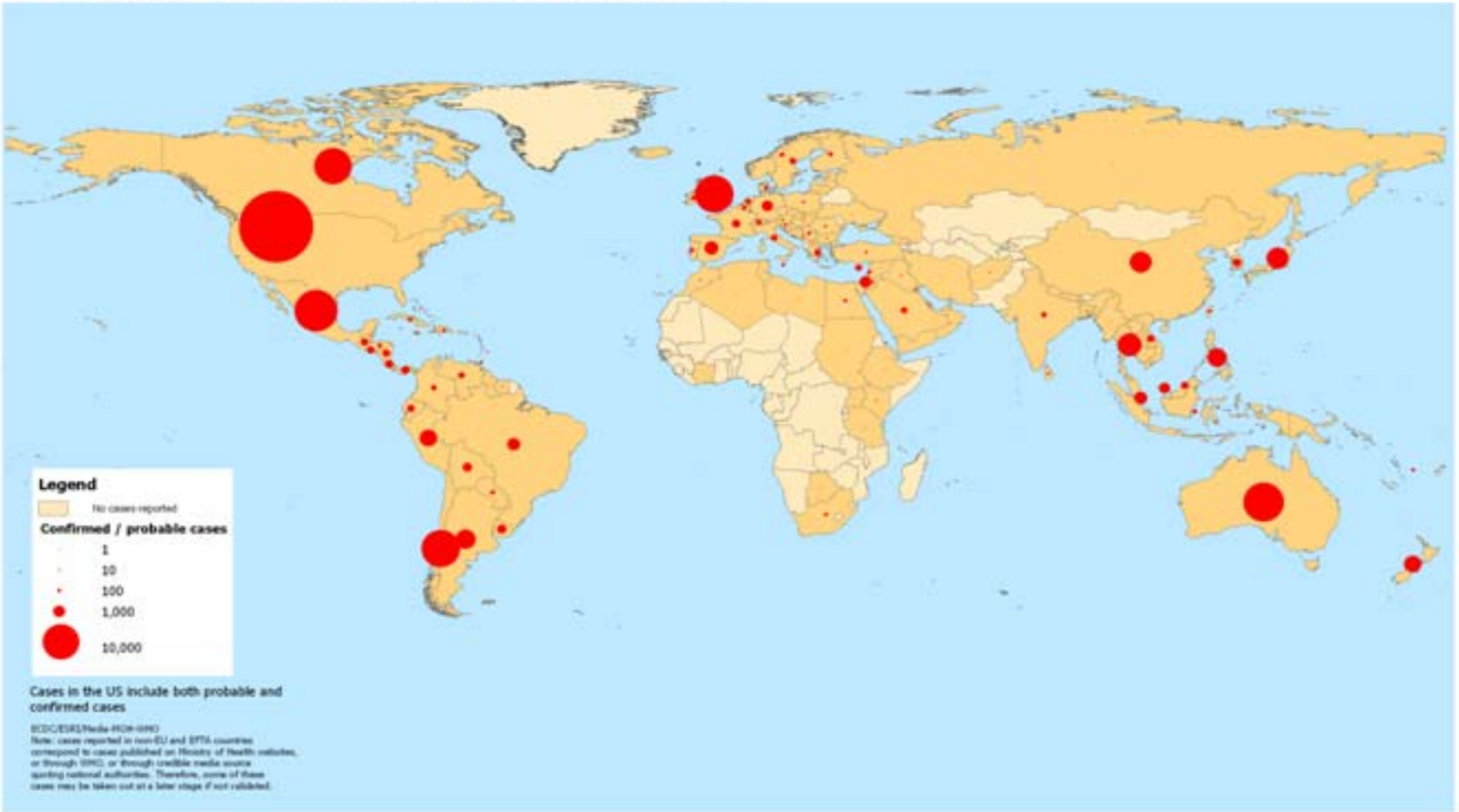
**Only hospitalizations and deaths of cases will be reported as of 23 JUL 2009.**



# International Reported Cumulative Cases by Country novel 2009-H1N1 – 21 JUL 2009



Reported cumulative number of confirmed cases of influenza A(H1N1)v  
by country, as of 18 July 2009, 17:00 hours CEST





**International  
Africa Update  
novel 2009-H1N1 – 21 JUL 2009**

---



## South Africa

- Growing dominance of novel 2009-H1N1 over seasonal influenza
- CDC.EISO in Soweto
  - SARI surveillance in ICU
  - Increase sampling of adults in hospital
  - Expanding to ED, deaths



**Epidemiology/Surveillance**  
**Syndromic Surveillance Systems, *Existing and Opportunities under Evaluation***  
**novel 2009-H1N1 – 21 JUL 2009**



<b>Name</b>	<b>Status</b>	<b>Description</b>	<b>Catchment</b>	<b>Frequency</b>
<b>ILINet</b>	<b>Existing</b>	<b>Outpatient visits for ILI based on physician diagnosis</b>	<b>2500 providers in 50 states (&gt;23 million visits/year)</b>	<b>Daily and weekly</b>
<b>VSD</b>	<b>Existing</b>	<b>Outpatient and inpatient pneumonia and influenza using ICD9 codes</b>	<b>8.25 million</b>	<b>OPD weekly IPD monthly</b>
<b>122 Cities Mortality</b>	<b>Existing</b>	<b>Pneumonia and influenza deaths</b>	<b>24% of US population</b>	<b>Weekly (daily possible)</b>
<b>Indian Health Service</b>	<b>Existing</b>	<b>Outpatient and inpatient pneumonia and influenza using ICD9 codes</b>	<b>2 million</b>	
<b>BioSense</b>	<b>Existing</b>	<b>Outpatient and inpatient pneumonia and influenza using ICD9 codes Chief complaint Lab Corp &amp; Quest</b>	<b>550 hospitals and EDs</b>	<b>Daily</b>



**Epidemiology/Surveillance**  
**Syndromic Surveillance Systems, *Existing and Opportunities under Evaluation***  
**novel 2009-H1N1 – 21 JUL 2009**



<b>Name</b>	<b>Status</b>	<b>Description</b>	<b>Catchment</b>	<b>Frequency</b>
<b>BRFSS</b>	<b>In development</b>	<b>Community infection and care seeking frequency</b>	<b>National and Territories</b>	<b>Monthly</b>
<b>DiSTRIBuTE</b>	<b>In development</b>	<b>ED visits for summarized counts of ILI syndrome</b>	<b>TBD</b>	<b>Daily</b>
<b>GE</b>	<b>In development</b>	<b>Outpatient visits by patient complaint and diagnosis Pharmaceutical data Laboratory findings</b>	<b>TBD</b>	<b>TBD</b>
<b>SDI</b>	<b>Under evaluation</b>	<b>Outpatient visits for ILI based on ICD-9 code identification</b>	<b>45% of insured US outpatient visits</b>	<b>Daily</b>
<b>SDI</b>	<b>Under evaluation</b>	<b>Inpatient visits for pneumonia and influenza from all cause hospitalization using ICD9 codes</b>	<b>21% of insured US inpatient encounters</b>	<b>1 week</b>
<b>SDI</b>	<b>Under evaluation</b>	<b>Vaccine administration from outpatient visits</b>	<b>45% of insured US outpatient visits</b>	<b>Daily</b>



**Epidemiology/Surveillance**  
**Syndromic Surveillance Systems, *Existing and Opportunities under Evaluation***  
**novel 2009-H1N1 – 21 JUL 2009**



<b>Name</b>	<b>Status</b>	<b>Description</b>	<b>Catchment</b>	<b>Frequency</b>
<b>Cerner</b>	<b>Under evaluation</b>	<b>Influenza laboratory testing, may be able to provide bacterial infections</b>	<b>EST: 22 labs in 20 states</b>	
<b>Voxiva</b>	<b>Under evaluation</b>	<b>Inpatient visits for pneumonia and influenza from all cause hospitalization using ICN reports Hospital census reports</b>	<b>TBD by enrollment through APIC</b>	<b>TBD, but flexible</b>
<b>Premier</b>	<b>Under evaluation</b>	<b>Admission diagnoses Lab testing ICU information Pharmaceutical utilization Patient disposition</b>	<b>200 hospitals</b>	<b>Real-time</b>
<b>MedMined</b>	<b>Under evaluation</b>	<b>Admission diagnoses Influenza test orders (all labs) Pharmaceutical utilization Hospital census</b>	<b>310 hospitals</b>	<b>Real-time</b>



## Laboratory Influenza Diagnostic Tests novel 2009-H1N1 – 21 JUL 2009



- Conference call Friday 7/17 with Laboratory Partners' Organizations regarding interpretation of Rapid Influenza Diagnostic Test results
  - General agreement on guidelines
    - Refined Guidance for RIDT Testing – submitting final draft to CDC clearance emphasizing “use negative test results with caution”
    - Possibly different testing algorithms for “peak” (high prevalence) and “off season” testing
  - Suggest single document for clinicians and laboratories
  - Suggest guidelines precede or accompany MMWR on RIDT performance data
- FDA Proposed Changes to EUA for novel 2009-H1N1 PCR
  - In discussion w/FDA regarding new rule to limit PCR testing for novel 2009-H1N1 to only FDA-approved laboratories submitting validation via EUA
  - Further engagement needed to determine if new rule may lead to increased testing at PHLs





**Community Measures Task Force (CMTF)  
Update  
novel 2009-H1N1 – 21 JUL 2009**



- 
- Work on drafting comprehensive school guidance continues
    - Webinar with state health directors, other public health scheduled for July 30 to serve as sounding board
  - Isolation guidance in clearance
  - Planning meeting to discuss community measures lessons learned from Spring/Summer (mid August)



Joint Information Center (JIC)  
CDC Flu Twitter Channel 600,000 followers 7/20/09  
novel 2009-H1N1 – 21 JUL 2009



- 7/20/09 Tweets:
  - Shock that Australia's worst case scenario predicts 6,000 novel 2009-H1N1 deaths
  - novel 2009-H1N1 tests are unreliable
  - Thailand to step up flu screening measures
  - Hong Kong reports 76 new cases
  - Users say they avoid coworkers, friends, relatives, etc. who may have novel 2009-H1N1
  - First confirmed novel 2009-H1N1 death on Guam
  - "20,000 people die from novel 2009-H1N1 and everybody wants to wear a mask.
  - 9 million people die from AIDS and no one wants to wear a condom
  - User says that "more and more evidence" shows that the government created novel 2009-H1N1 in a lab and released it

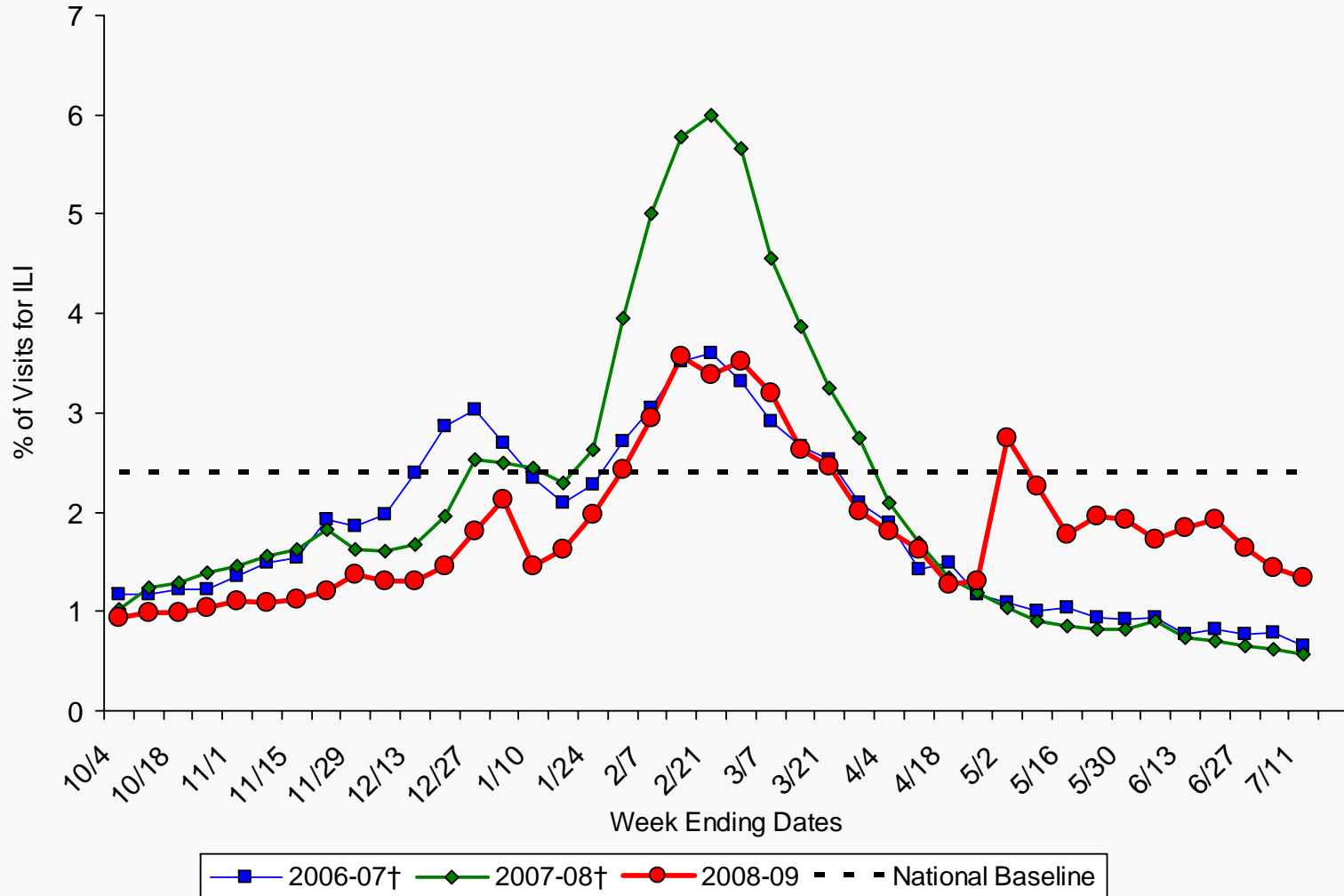


## **Supporting Documentation**



# Epidemiology/Surveillance novel 2009-H1N1 – 21 JUL 2009

## Percentage of Visits for Influenza-like Illness (ILI) Reported by the *US Outpatient Influenza-like Illness Surveillance Network (ILINet)*, National Summary 2008-09 and Previous Two Seasons



† There was no week 53 during the 2006-07 and 2007-08 seasons, therefore the week 53 data point for those seasons is an average of weeks 52 and 1.



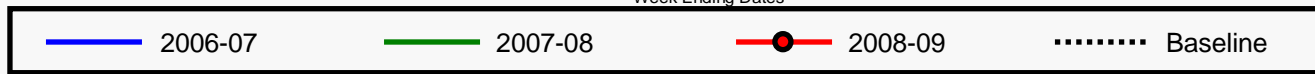
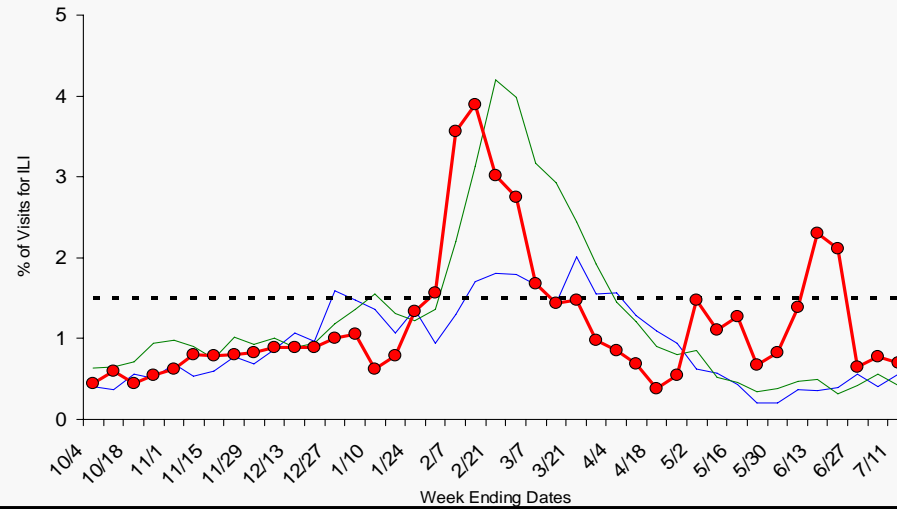
# Epidemiology/Surveillance

## novel 2009-H1N1 – 21 JUL 2009

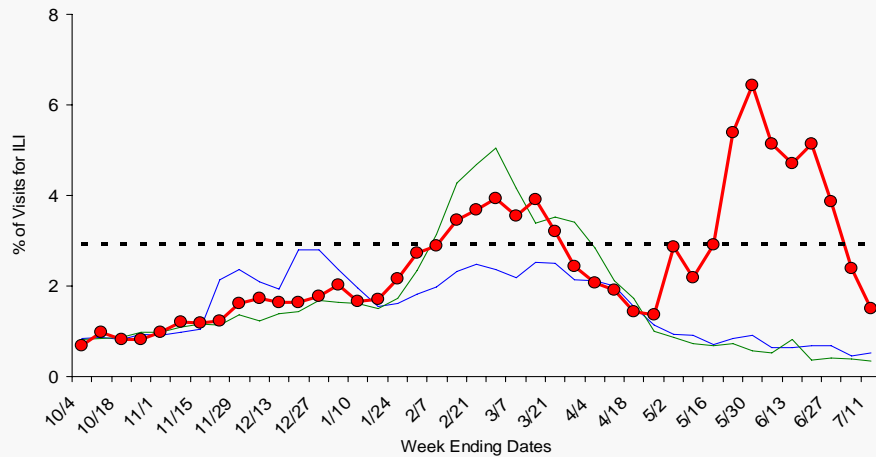
### Current Influenza Surveillance – *ILINet Regions I-III*



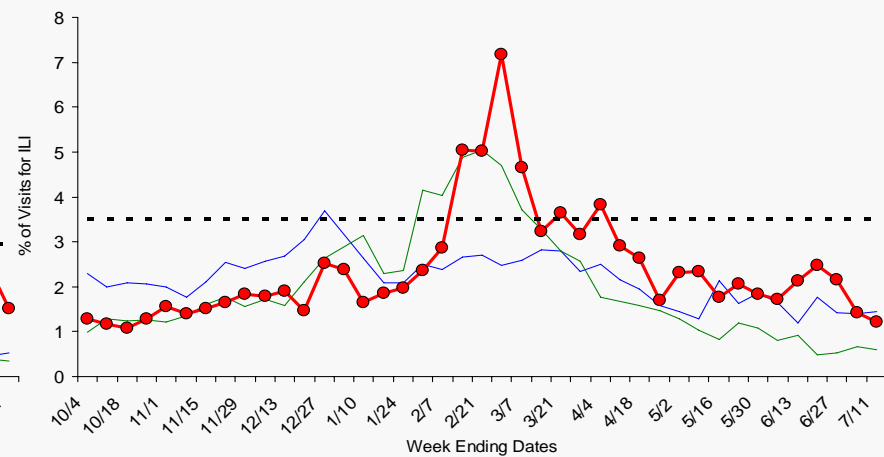
Region I - CT, ME, MA, NH, RI, VT



Region II - NJ, NY



Region III - DE, DC, MD, PA, VA, WV

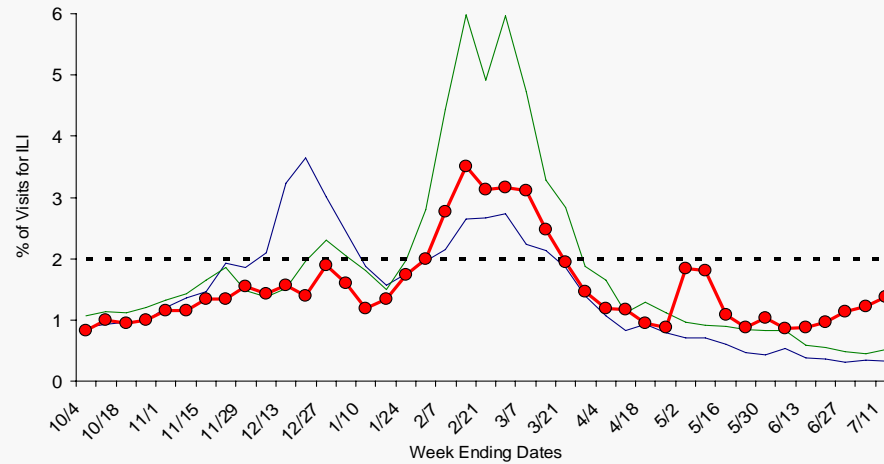




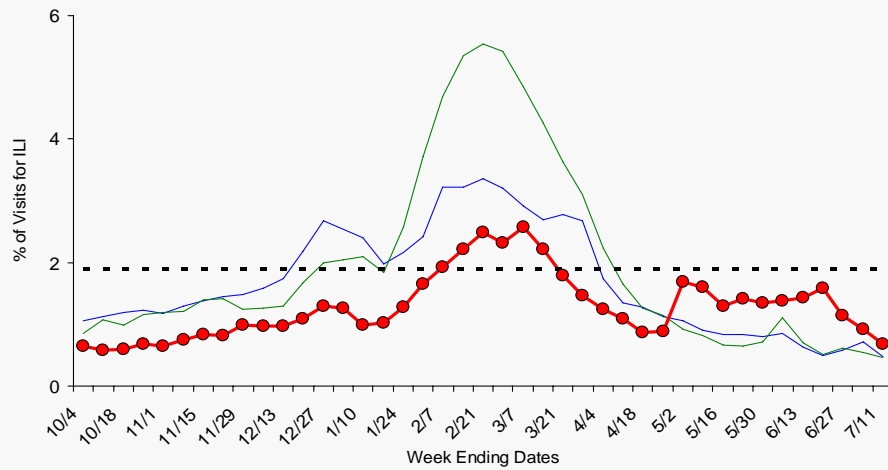
# Epidemiology/Surveillance novel 2009-H1N1 – 21 JUL 2009 Current Influenza Surveillance – *ILINet* Regions IV-VI



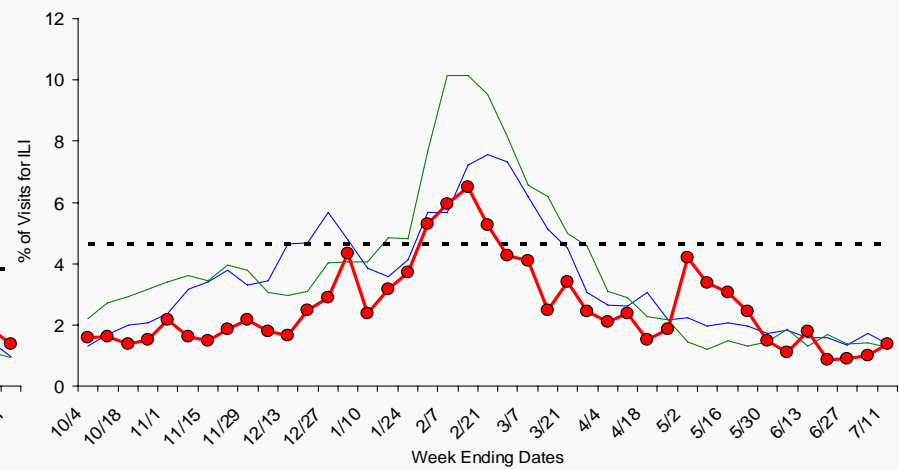
Region IV - AL, FL, GA, KY, MS, NC, SC, TN



Region V - IL, IN, MI, MN, OH, WI



Region VI - AR, LA, NM, OK, TX



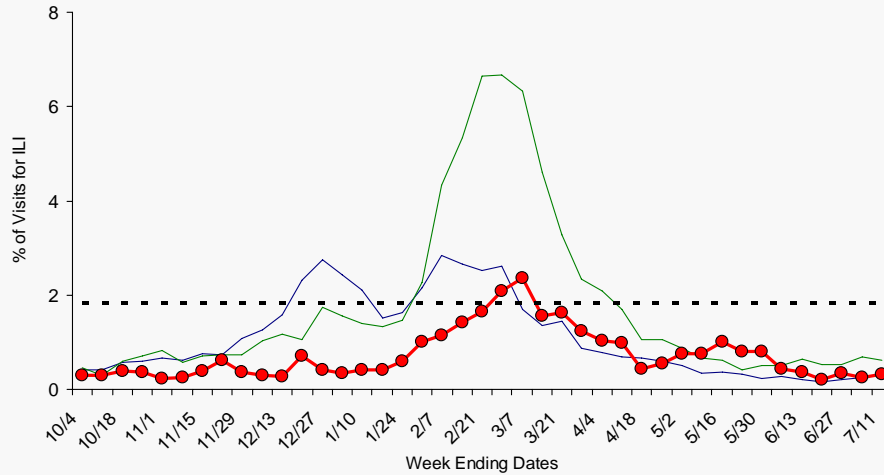


# Epidemiology/Surveillance novel 2009-H1N1 – 21 JUL 2009

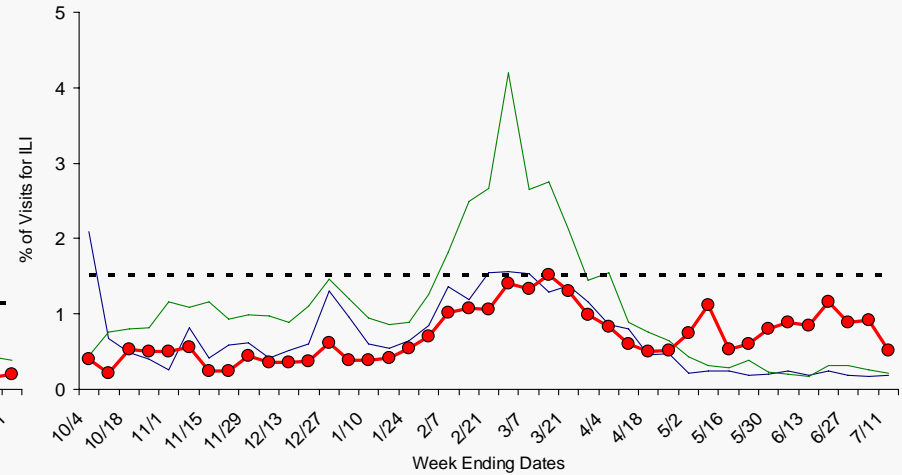


## Current Influenza Surveillance – *ILINet* Regions VII-X

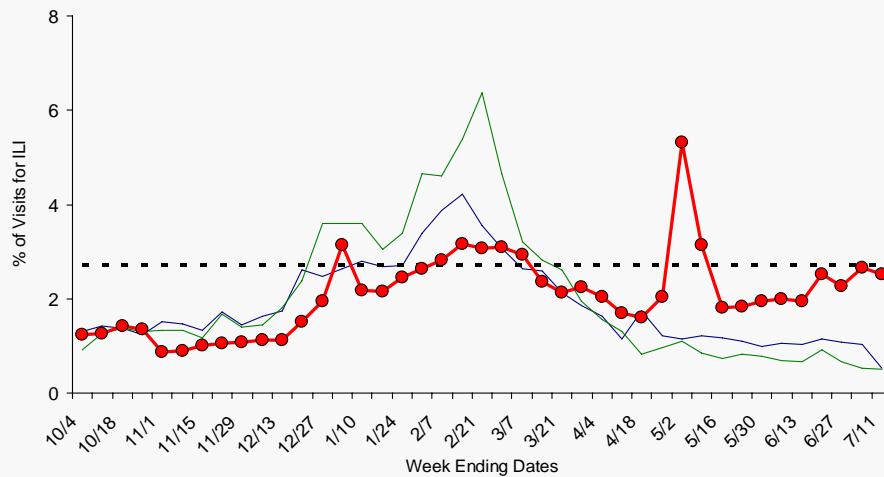
Region VII - IA, KS, MO, NE



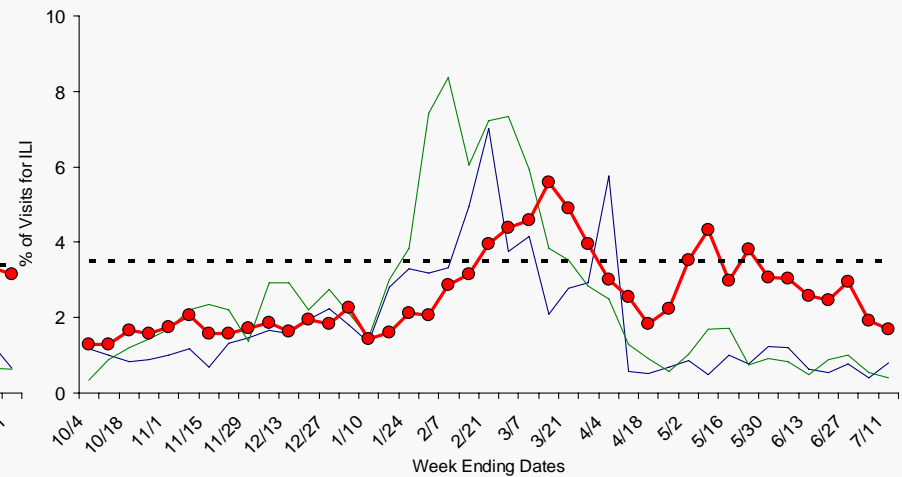
Region VIII - CO, MT, ND, SD, UT, WY



Region IX - AZ, CA, HI, NV



Region X - AK, ID, OR, WA



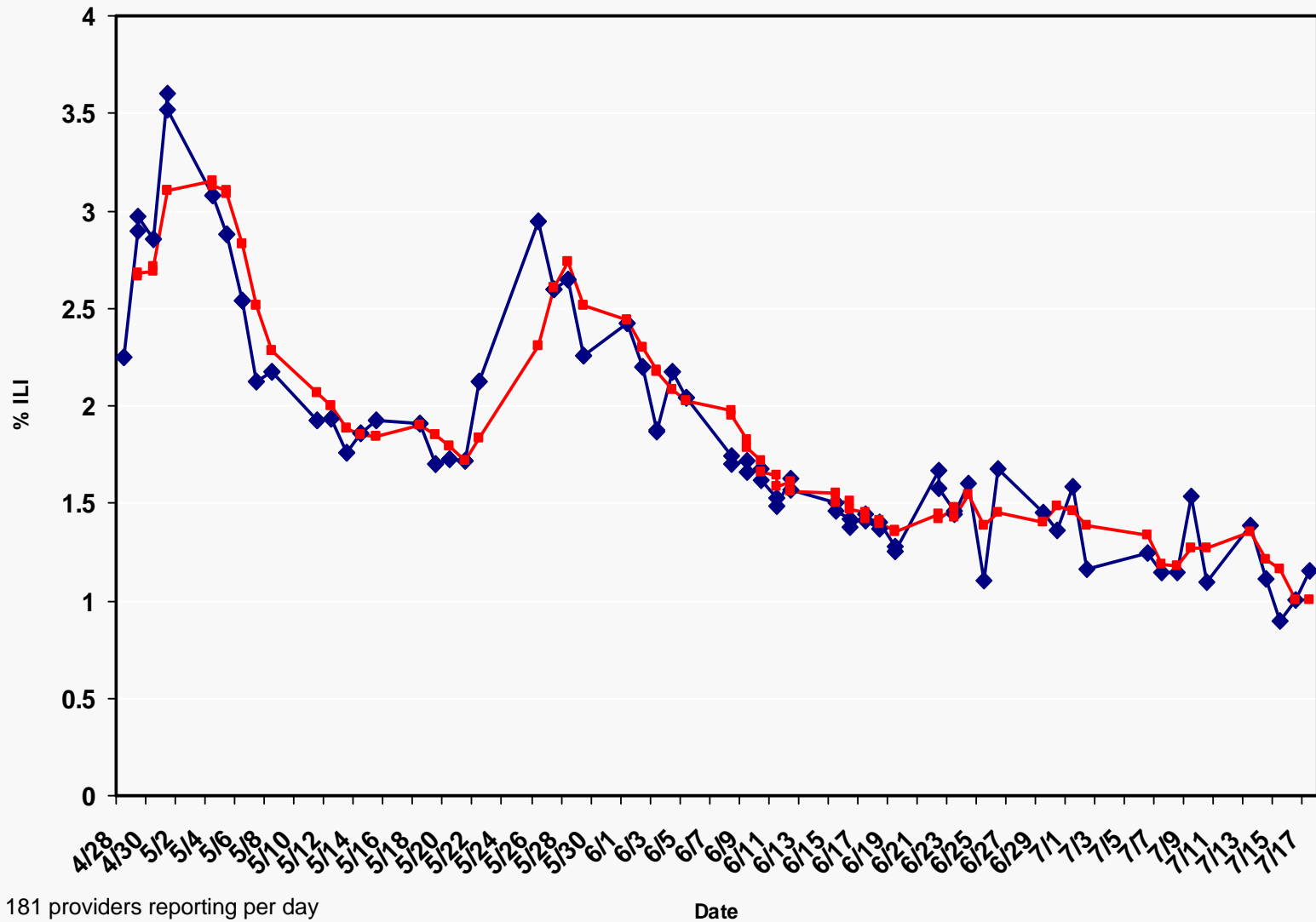
Internal Use Only (FIUO)---For Official Use Only (FOUO)



# Epidemiology/Surveillance novel 2009-H1N1 – 21 JUL 2009



## Percentage of Visits Due to ILI Reported to *ILINet*\*, by Day\*\*



\*Average of 181 providers reporting per day

\*\*Weekend and holiday data excluded

◆ %ILI    ■ Three Day Moving Average

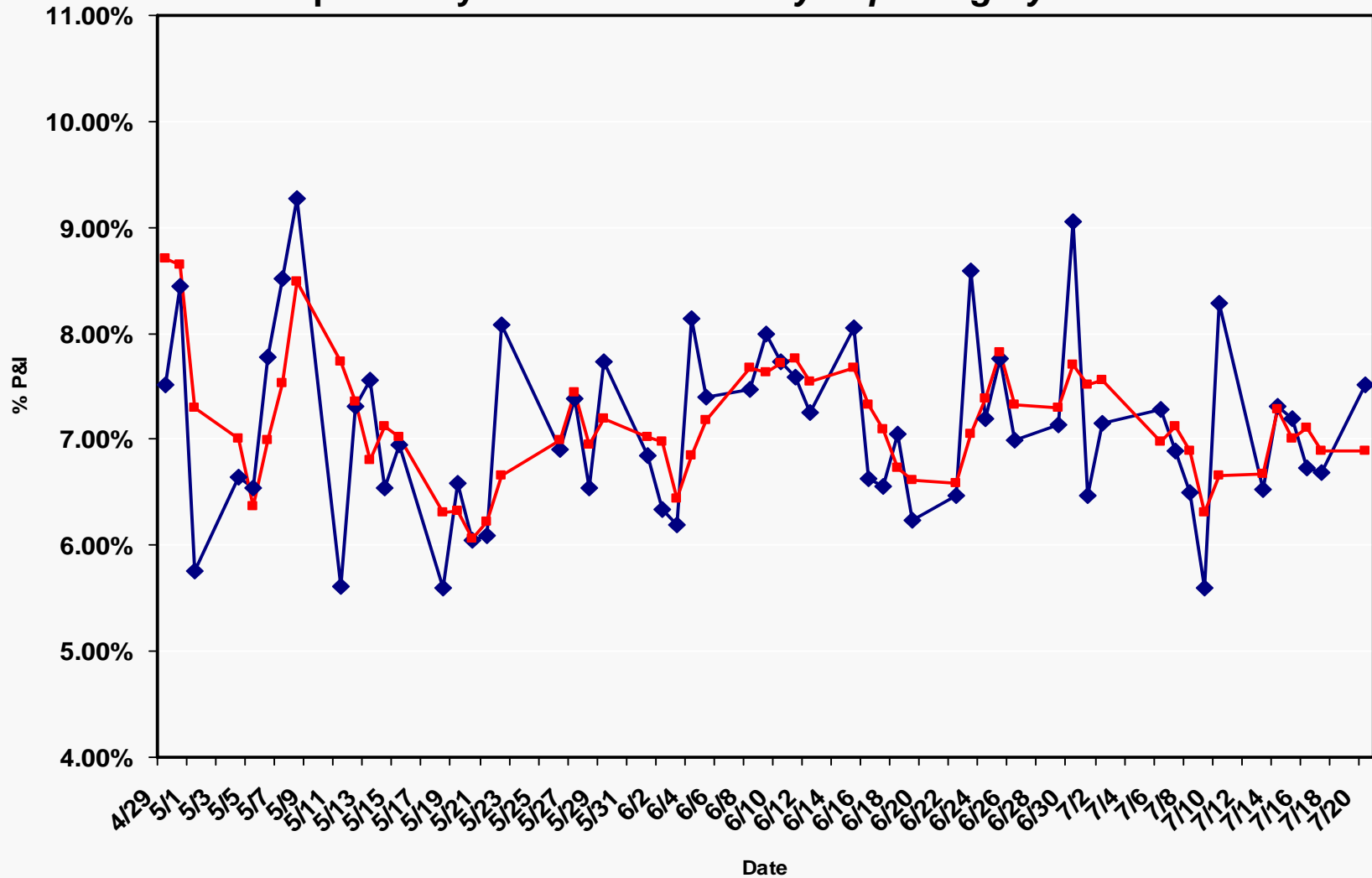
Internal Use Only (FIUO)---For Official Use Only (FOUO)





# Epidemiology/Surveillance novel 2009-H1N1 – 21 JUL 2009

## Percentage of Deaths Due to Pneumonia and Influenza Reported by 122 Cities Mortality Reporting System



\*Average of 53 cities reporting per day

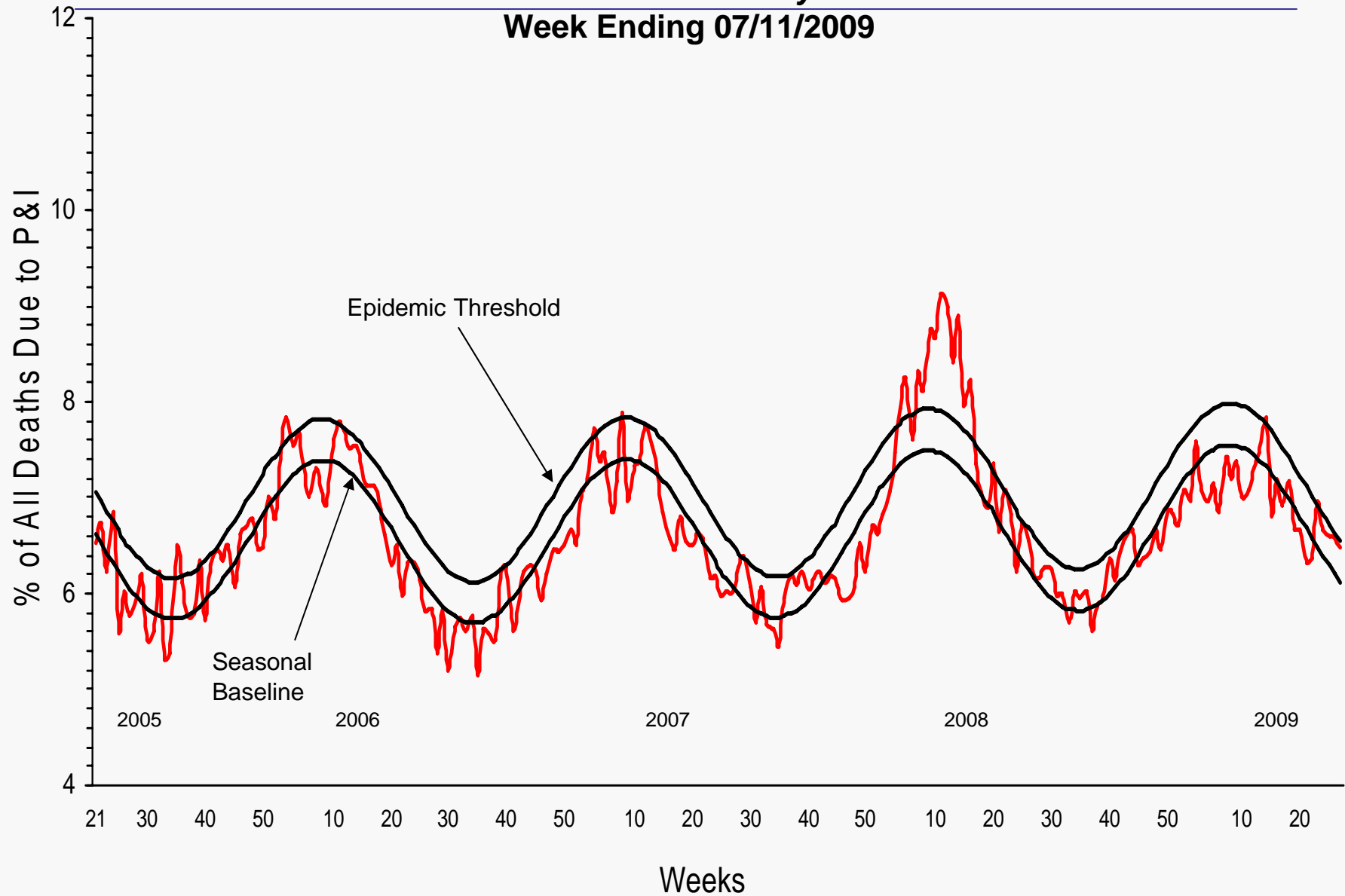
\*\*Weekend & Holiday data excluded



Internal Use Only (FIUO)---For Official Use Only (FOUO)



Epidemiology/Surveillance  
novel 2009-H1N1 – 21 JUL 2009  
***Pneumonia and Influenza Mortality for 122 U.S. Cities***  
**Week Ending 07/11/2009**



Internal Use Only (FIUO)---For Official Use Only (FOUO)