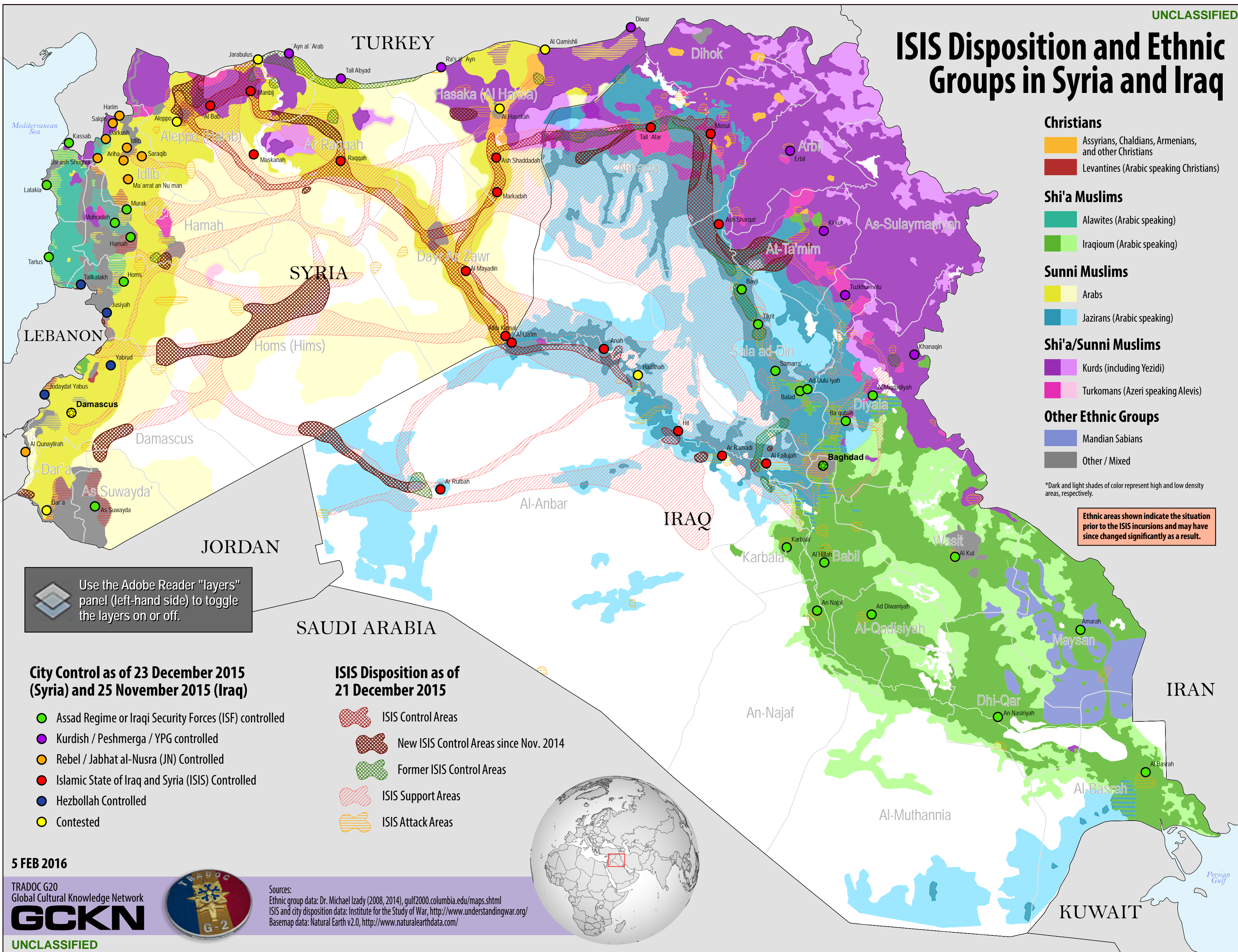


ISIS Disposition and Ethnic Groups in Syria and Iraq



Christians

- Assyrians, Chaldeans, Armenians, and other Christians
- Levantines (Arabic speaking Christians)

Shi'a Muslims

- Alawites (Arabic speaking)
- Iraqioun (Arabic speaking)

Sunni Muslims

- Arabs
- Jazirans (Arabic speaking)

Shi'a/Sunni Muslims

- Kurds (including Yezidi)
- Turkomans (Azeri speaking Alevis)

Other Ethnic Groups

- Mandian Sabians
- Other / Mixed

*Dark and light shades of color represent high and low density areas, respectively.

Ethnic areas shown indicate the situation prior to the ISIS incursions and may have since changed significantly as a result.

Use the Adobe Reader "layers" panel (left-hand side) to toggle the layers on or off.

City Control as of 23 December 2015 (Syria) and 25 November 2015 (Iraq)

- Assad Regime or Iraqi Security Forces (ISF) controlled
- Kurdish / Peshmerga / YPG controlled
- Rebel / Jabhat al-Nusra (JN) Controlled
- Islamic State of Iraq and Syria (ISIS) Controlled
- Hezbollah Controlled
- Contested

ISIS Disposition as of 21 December 2015

- ISIS Control Areas
- New ISIS Control Areas since Nov. 2014
- Former ISIS Control Areas
- ISIS Support Areas
- ISIS Attack Areas



Sources:
 Ethnic group data: Dr. Michael Izady (2008, 2014), gulf2000.columbia.edu/maps.shtml
 ISIS and city disposition data: Institute for the Study of War, <http://www.understandingwar.org/>
 Basemap data: Natural Earth v2.0, <http://www.naturalearthdata.com/>

