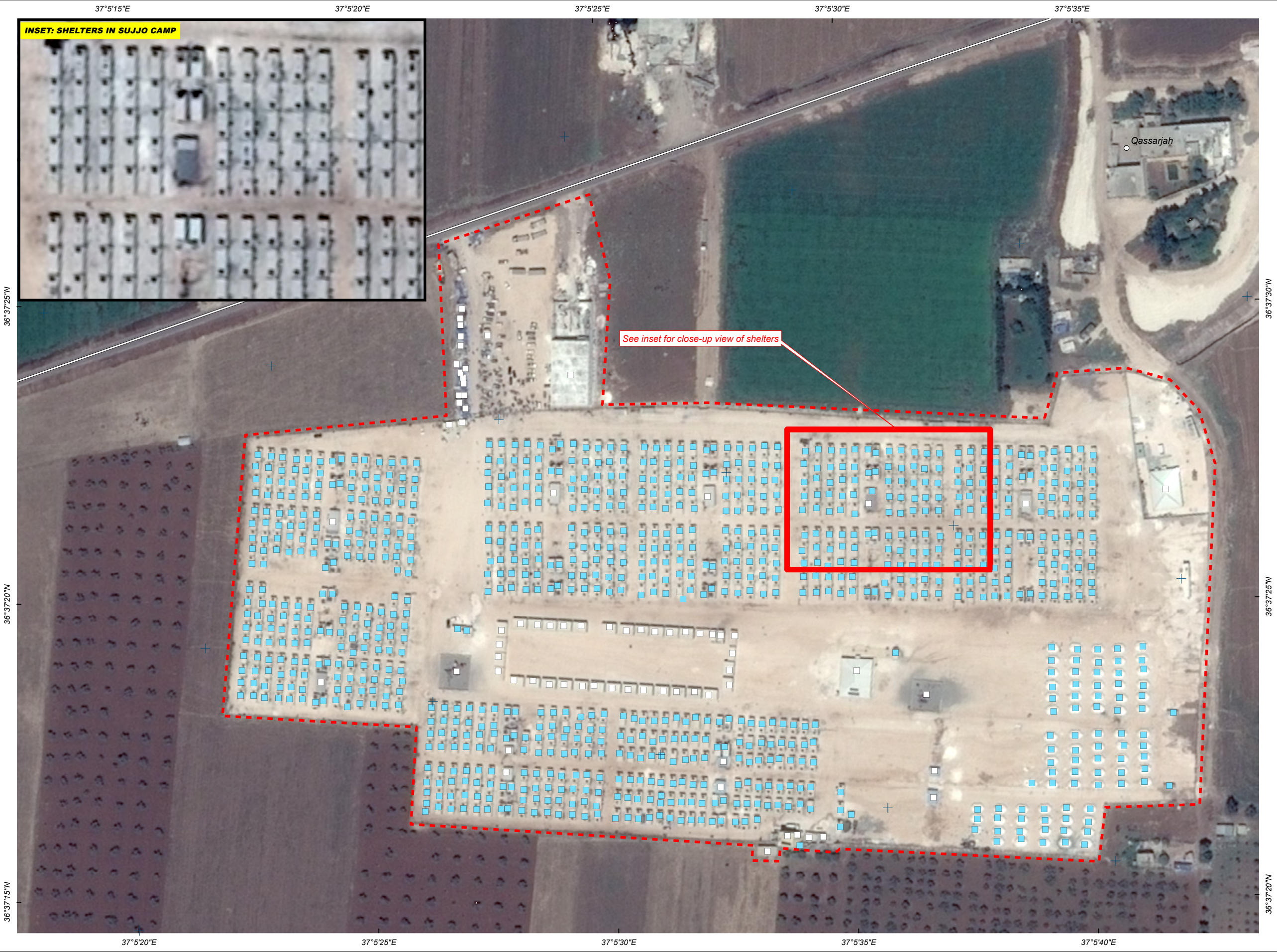


SUJJO IDP CAMP, A'ZAZ DISTRICT, ALEPPO GOVERNORATE, SYRIA

Analysis with Pleiades Data Acquired 05 June 2015

This map illustrates satellite-detected shelters and other buildings at the Sujjo IDP Camp in A'Zaz District, Syria. As of 05 June 2015, a total of 955 shelters were detected as well as 74 infrastructures and support buildings within the 12 hectares of the camp. This is a preliminary analysis & has not yet been validated in the field. Please send ground feedback to UNITAR / UNOSAT.

IDP Camp
Production Date: 19-Jun-15
Version 1.0
Activation Number: CE20130604SYR



- LEGEND**
- Populated Place
 - Admin Building (74)
 - Tent Shelter (955)
 - Camp Extent
 - == Secondary Road

Map Scale for A3: 1:2,000

0 25 50 75 100 Meters

Satellite Data: Pleiades
Imagery Dates: 05 June 2015
Resolution: 50 cm
Copyright: Copyright CNES 2015 - Distribution Astrium Service / SPOT Image
Source: Geostore
Road Data: UNITAR / UNOSAT
Other Data: USGS, UNCS, NASA, NGA
Analysis: UNITAR / UNOSAT
Production: UNITAR / UNOSAT
Analysis conducted with ArcGIS v10.3

Coordinate System: WGS 1984 UTM zone 37N
Projection: Transverse Mercator
Datum: WGS 1984
Units: Meter

The depiction and use of boundaries, geographic names and related data shown here are not warranted to be error-free nor do they imply official endorsement or acceptance by the United Nations. UNOSAT is a program of the United Nations Institute for Training and Research (UNITAR), providing satellite imagery and related geographic information, research and analysis to UN humanitarian and development agencies and their implementing partners.

This work by UNITAR/UNOSAT is licensed under a Creative Commons Attribution-NonCommercial-ShareAlike 3.0 Unported License.



UNOSAT

Contact Information: unosat@unitar.org
24/7 Hotline: +41 76 487 4998
www.unitar.org/unosat