

Drug Monitoring Initiative

DMI

Drug Identification Guide

(U//FOUO) The New Jersey Regional Operations Intelligence Center (NJ ROIC) monitors New Jersey drug environment through the Drug Monitoring Initiative (DMI), providing an understanding of the presence and prevalence of drugs in regions throughout the state. This pill guide is for law enforcement officers and public safety officials to utilize when encountering pill products during the course of their daily duties.

(U) The NJ ROIC monitors drug activity in New Jersey and the surrounding region through the Drug Monitoring Initiative (DMI). The purpose of the Drug Monitoring Initiative is to establish a multi-jurisdictional, multi-state drug incident information-sharing environment through the robust collection and analysis of drug seizures, overdoses, related criminal behavior, and healthcare related services.





(U//FOUO) NJ ROIC Fusion Liaison & Intelligence Training Unit~ROIC201411-04280F
NJ ROIC SIN: NJ-CRM-0100 (Geographic) / DHS SIN: HSEC 5 (Illicit Drug Operations)

OPIOIDS AND OPIATES

(U//FOUO) There are often misconceptions regarding the terms “opioid” and “opiate.” The terms are often used interchangeably. **Opioids** are synthetic or partly synthetic, meaning the active ingredients are manufactured by chemical synthesis.¹ **Opiates** are substances derived from the poppy plant, which contains opium. Common opiates include morphine, codeine, and thebaine (paramorphine) which are all made directly from poppy plants.

(U//FOUO) On the street, “heroin” may refer to synthetic, natural, or semi-synthetic compounds. Manufactured opioids, like Oxycontin, are sometimes referred to as “synthetic heroin.” Heroin as originally formulated, is technically an opioid since it is chemically manufactured. Although molecules from the opium plant are used in the process, some of heroin’s active ingredients are not found in nature.²

(U//FOUO) The following information is provided regarding some of the most commonly seen and seized opioid and non-opioid pills throughout the state. Brand names are included for situational awareness. For additional information regarding identification of these and other pills, contact the Poison Control Center at 1-800-222-1222, go to Drugs.com, <http://www.drugs.com/>, or the National Association of Drug Diversion Investigators, Inc., <http://www.naddi.org>.

OPIOIDS

Buprenorphine



Buprenorphine is a semi-synthetic derivative of thebaine, with effects almost identical to methadone. The drug prevents withdrawal symptoms of opioid drugs by producing similar effects to those drugs.

- High doses to treat opioid addiction; lower dosages to control moderate acute/chronic pain.
- Brand names: Buprenex, Subutex, Zubsolv, Suboxone (buprenorphine and naloxone), Temgesic, Buprenex, Norspan, Butrans.
- **Side effects** may include severe allergic reactions, anxiety/nervousness, fast/irregular heartbeat, mood changes (depression), slow/shallow breathing, unusual weakness, vision changes, and yellowing of skin/eyes.

Codeine



Codeine, an opiate, is a narcotic analgesic derived from the opium poppy.

- Used to treat mild to moderate pain.
- Available in combination with acetaminophen, aspirin, and carisoprodol (a muscle relaxer that blocks pain sensations) and as an ingredient in cough and cold medications.
- **Overdose symptoms** may include slow breathing and heart rate, severe drowsiness, muscle weakness, cold and clammy skin, pinpoint pupils, and fainting.

Heroin Pills



Heroin Pills are a new form of the highly addictive illegal drug heroin.

- Heroin pills found in New Jersey were marked with an “M” on the front and a “30” on the back and reportedly contain heroin cut with Oxycodone/Percocet, then re-pressed into pill form.

¹ DetoxAnswers, <http://detoxanswers.com/questions/420/opiate-vs-opioid-what-is-the-difference-between-opiate-and-opioid>
Accessed November 20, 2014

² Ibid.

Hydrocodone



Hydrocodone is a semi-synthetic opioid pain reliever and antitussive (cough medicine).

- Acetaminophen increases the effects of hydrocodone. The combination is used to relieve moderate to severe pain.
- Brand names: Vicodin, Zydone, Anexsia, Lorcet, Lortab.
- Zohydro ER is a recently approved extended-release hydrocodone, nicknamed “heroin in a capsule.”
- **Overdose symptoms** may include extreme drowsiness, sweating, pinpoint pupils, nausea, vomiting, dark urine, jaundice (yellowing of the skin or eyes), confusion, cold and clammy skin, muscle weakness, fainting, weak pulse, slow heart rate, coma, blue lips, shallow breathing, or no breathing.

Methadone



Methadone is a synthetic narcotic analgesic, used to manage severe chronic pain and as part of drug addiction detoxification and maintenance programs. It reduces withdrawal symptoms in people addicted to heroin/morphine/other narcotic drugs, without causing the "high" associated with the addiction.

- Brand names: Symoron, Dolophine, Amidone, Methadose, Physeptone, Heptadon.
- **Serious side effects** may include weak/shallow breathing, light-headedness, fast heartbeat, severe constipation, dizziness, drowsiness, nausea/vomiting, and increased sweating.

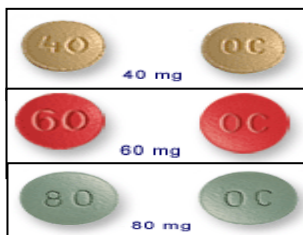
Morphine



Morphine is an opiate narcotic analgesic derived from the opium poppy.

- Used to treat acute and chronic moderate to severe pain by acting directly on the central nervous system.
- Brand names include nearly a hundred variations, including AVINza, Kadian, MS Contin.
- **Overdose symptoms** may include slow breathing and heart rate, severe drowsiness, muscle weakness, cold and clammy skin, pinpoint pupils, and fainting.

Oxycodone



Oxycodone is an opioid narcotic pain medication, used to treat moderate to severe pain. The extended release version is intended for around-the-clock treatment of pain, not for use on an as-needed basis for pain.

- Brand names: OxyCONTIN, Oxeta, Oxyfast, Roxicodone.
- **Side effects** may include shallow breathing, slow heartbeat, cold clammy skin, seizures, confusion, mild/severe drowsiness, lightheadedness/dizziness, headache, stomach pain, nausea, vomiting, constipation, loss of appetite, dry mouth, and mild itching.



NON-OPIOIDS

Alprazolam



Alprazolam belongs to a group of drugs called benzodiazepines, used to treat anxiety disorders, panic disorders, and anxiety caused by depression.

- Slows the movement of chemicals in the brain that may become unbalanced, resulting in a reduction in nervous tension/anxiety.
- Brand names: Xanax, Xanax XR, Niravam.
- **Overdose symptoms** may include extreme drowsiness, confusion, muscle weakness, loss of balance or coordination, light-headedness, and fainting.

Amphetamine



Amphetamine is a stimulant and appetite suppressant, used to treat narcolepsy and attention deficit disorder with hyperactivity (ADHD).

- Stimulates the central nervous system (nerves and brain) by increasing the amount of certain chemicals in the body, increasing heart rate and blood pressure and decreasing appetite.
- Brand names: Adderall, Dexedrine, DestroStat, Desoxyn, Desoxyn Gardumet.
- **Overdose symptoms** may include restlessness, tremors, rapid breathing, confusion, hallucinations, panic, aggressiveness, nausea, vomiting, diarrhea, irregular heartbeat, and seizures.
- **Withdrawal symptoms** may include depression, stomach cramps, nausea/vomiting, "the shakes," and tiredness.

Clonazepam



Clonazepam belongs to a group of drugs called benzodiazepines, used to treat seizure disorders/panic disorder.

- Affects chemicals in the brain that may become unbalanced and cause anxiety.
- Brand names: Klonopin, Klonopin Wafer.
- **Overdose symptoms** may include extreme drowsiness, confusion, muscle weakness, and fainting.

Cyclobenzaprine



Cyclobenzaprine is a muscle relaxant, used to treat skeletal muscle conditions/pain.

- Works by blocking nerve impulses/pain sensations that are sent to the brain.
- Brand names: Flexeril, Amrix, Comfort Pac with Cyclobenzaprine.
- Side effects may include severe drowsiness, fast heart rate, agitation, tremors/shaking, pounding heartbeat, hallucinations, fever, overactive reflexes, nausea, vomiting, diarrhea, loss of coordination, fainting, headache, dizziness, difficulty concentrating, blurred vision, dry mouth/throat, and altered sense of taste.

Ethylone



Ethylone is a research chemical that releases serotonin, norepinephrine, and dopamine, producing effects comparable to methylone/MDEA which are psychoactive drugs.

- Has been found as one of the main ingredients in several “bath salt” blends.
- **Effects** include euphoria, empathy, feelings of connectedness with the world/others, lowered inhibitions, color enhancement, mild hallucinations, and dry mouth.
- **Negative effects** may include nausea, anxiety, paranoia, depression, tachycardia, heart palpitation, and hypertension.

Hydrochlorothiazide



Hydrochlorothiazide is a diuretic/water pill that prevents the body from absorbing too much salt, which can cause fluid retention.

- Used to treat fluid retention/edema caused by congestive heart failure, cirrhosis of the liver, kidney disorders, or taking steroids or estrogen. Also used to treat high blood pressure (hypertension).
- Brand names: Aquazide, Microzide, HydroDIURIL
- **Side effects** may include eye pain/blurred vision, dry mouth, thirst, nausea, vomiting, weakness, drowsiness, restlessness, light-headedness, fast/uneven heartbeat, muscle pain/weakness, numbness/tingly feeling, red/blistering/peeling skin rash, nausea, stomach pain, itching, loss of appetite, yellowing of skin/eyes, diarrhea, and constipation.

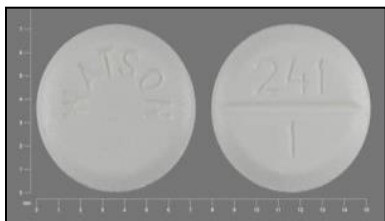
Lisdexamfetamine



Lisdexamfetamine is an amphetamine with a high risk for abuse, used to treat attention deficit hyperactivity disorder (ADHD).

- Affects certain chemicals in the brain that may help improve attention span and behavior.
- Brand name: Vyvanse
- **Side effects** may include decreased appetite, diarrhea, dizziness, dry mouth, headache, nausea, stomach pain, weight loss, severe allergic reactions (rash, hives, itching, difficulty breathing, swelling of mouth, face, lips/tongue, hoarseness), blurred vision, chest, jaw/arm pain, fast/irregular heartbeat, fever, hallucinations, new/worsening mental, mood or behavior changes, seizures, severe nausea/vomiting, unusual sweating, weakness, and tiredness.

Lorazepam



Lorazepam belongs to a group of drugs called benzodiazepines, used to treat anxiety disorders.

- Affects chemicals in the brain that may become unbalanced and cause anxiety.
- Brand name: Ativan
- **Overdose symptoms** may include extreme drowsiness, confusion, muscle weakness, fainting, and coma.

MDMA



MDMA (3,4 methylenedioxymethamphetamine) is a synthetic, psychoactive drug with a chemical structure similar to the stimulant methamphetamine and the hallucinogen mescaline.

- Stimulates the release of the neurotransmitter serotonin from brain neurons, producing a high lasting several minutes to an hour.
- Can produce stimulant effects such as an enhanced sense of pleasure, self-confidence and increased energy. Psychedelic effects include feelings of peacefulness, acceptance, and empathy.
- **Possible side effects** include confusion, depression, sleep problems, anxiety, paranoia, muscle tension, involuntary teeth-clenching, nausea, blurred vision, faintness, chills, sweating, increased heart rate and blood pressure, dehydration, hyperthermia, and heart or kidney failure.

Sildenafil



Sildenafil is used to treat high blood pressure in the lungs (pulmonary arterial hypertension/PAH) and erectile dysfunction.

- Works by relaxing and dilating blood vessels in the lungs, lowering blood pressure in the lungs and improving ability to exercise.
- Brand name: Viagra (blue pills), Revatio (white pills)
- **Should not be used** in conjunction with certain recreational drugs called "poppers." Poppers are the liquid form of amyl nitrate/nitrite or butyl nitrate/nitrite.
- **Possible side effects** may include headache, flushing, indigestion, nasal congestion, impaired/blurred vision, severe hypotension, arrhythmias, stroke, increased pressure inside the eyes, sudden hearing loss, and prolonged erection.

Tadalafil



Tadalafil relaxes muscles and increases blood flow to particular areas of the body, and is used to treat erectile dysfunction (impotence), symptoms of benign enlarged prostate, and pulmonary arterial hypertension.

- Brand names: Cialis, Adcirca
- **Side effects** may include headache, sudden vision changes/loss, prolonged erection, sudden hearing loss, chest pain, irregular heartbeat, swelling of hands/ankles/feet, seizure, lightheadedness, muscle pain/back pain, and pain in arms /legs.

Tizanidine



Tizanidine is a short-acting muscle relaxer, used to treat spasticity by temporarily relaxing muscle tone.

- Works by blocking nerve impulses/pain sensations that are sent to your brain.
- Brand name: Zanaflex
- **Side effects** may include chest pain, fever/chills, nausea/vomiting, nervousness, unusual tiredness, pain/burning while urinating, blurred vision, irregular heartbeat, itching skin, hallucinations, shortness of breath, weight gain, continued vomiting, and headache.



Trazodone



Trazodone is an antidepressant, used to treat major depressive disorder.

- Affects chemicals in the brain that may become unbalanced and cause depression.
- Brand names: Oleptro, Desyrel, Desyrel Dividose
- Overdose can be fatal when taken with alcohol, barbiturates (phenobarbital) or sedatives (diazepam (Valium)).
- **Overdose symptoms** may include blurred vision, chest pain/discomfort, confusion, difficulty breathing, dizziness, loss of consciousness, pale/blue lips/fingernails/skin, severe sleepiness/drowsiness, slow/irregular heartbeat, sweating, and unusual tiredness/weakness.

Zolpidem



Zolpidem is a sedative/hypnotic, used to treat insomnia.

- Affects chemicals in your brain that may become unbalanced and cause sleep problems (insomnia).
- Brand names: Ambien, Ambien CR, Edluar, Intermezzo, Zolpimist
- **Side effects** may include severe allergic reaction (hives, difficulty breathing, and swelling of face/lips/tongue/throat), chest pain, fast/irregular heartbeat, lightheadedness, nausea, diarrhea, upset stomach, headache, muscle pain, dizziness, and daytime drowsiness.

REFERRAL

(U//FOUO) Law enforcement officers, and others, who wish to identify unknown prescription drugs should contact the National Poison Control Hotline at 1-800-222-1222. By calling that number, you will be automatically connected to the drug and poison information center nearest you, who will assist in identifying the pill.

(U//FOUO) The Governor's Council on Alcoholism and Drug Abuse (GCADA) has launched a statewide awareness campaign, "Addiction Does Not Discriminate" to help fight drug abuse by showing that no one is immune to the deadly drug problem. This program provides New Jersey residents with information on preventing abuse, recognizing those at risk, and finding treatment. Please go to KnowAddiction.nj.gov to learn more.

(U//FOUO) Through the DMI, the State Police Regional Crime Labs will facilitate expedited forensic analysis of seized drugs to assist investigators and health care professionals during emergent situations. Any law enforcement agency requiring expedited analysis of heroin or other drug specimens involved in overdoses should contact the NJ ROIC Fusion Liaison & Intelligence Unit at: ROICOutreach@gw.njsp.org, by fax to 609-530-4174 or by calling 609-963-6900 ext. 6273 or 6232.