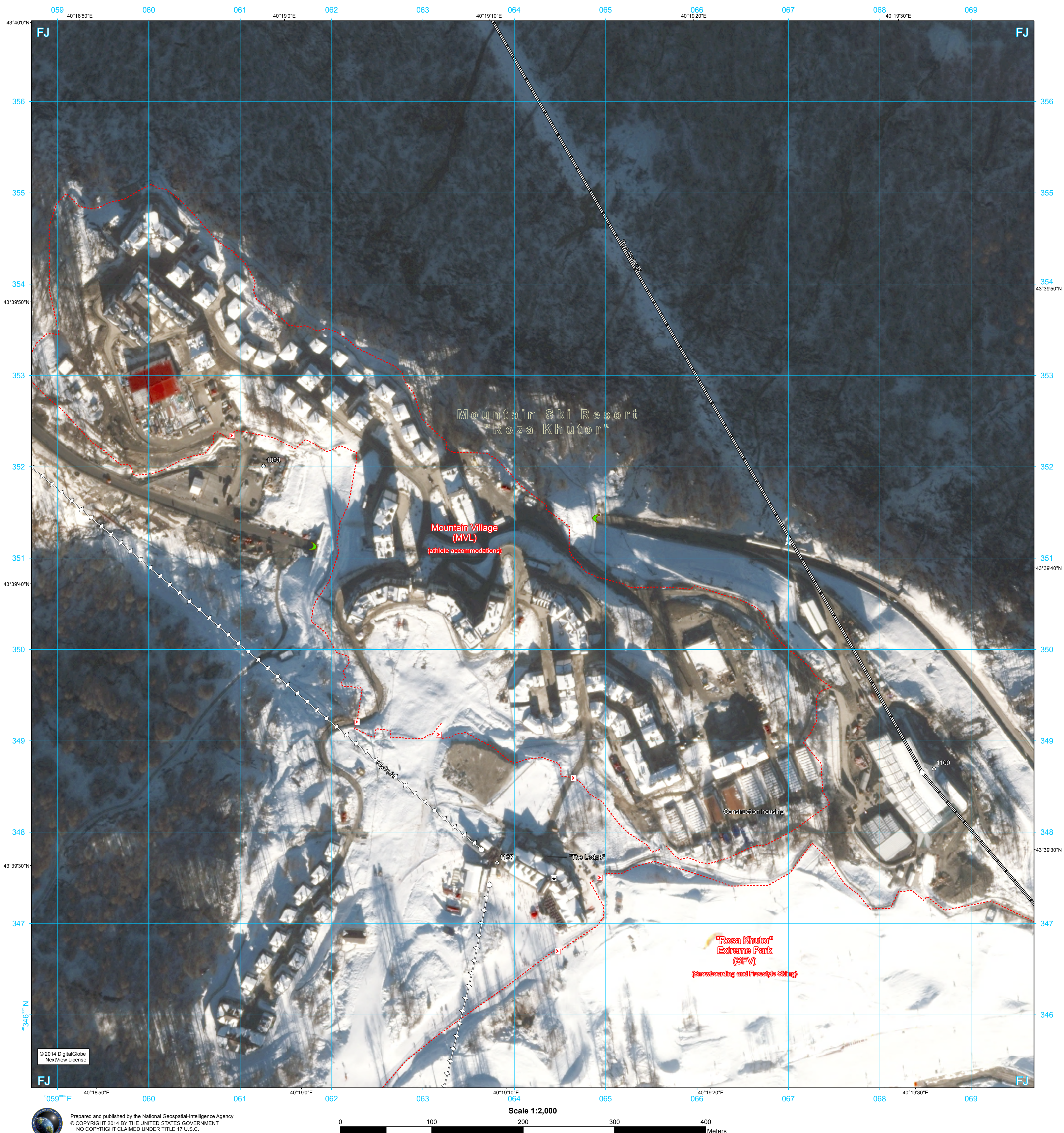


Mountain Village (MVL)



Prepared and published by the National Geospatial-Intelligence Agency
© COPYRIGHT 2014 BY THE UNITED STATES GOVERNMENT
NO COPYRIGHT CLAIMED UNDER TITLE 17 U.S.C.


Users' Note
Users should refer corrections,
additions, and comments to:
NGA Office of Eurasia-Africa, Eurasia Division
3838 Vogel Road, Mailstop L-83
Arnold, Missouri 63010-6238
Commercial: 314-676-6246

Construction Note
The Olympic event venues and support venues are in various stages of construction. Refer to the official Sochi 2014 Winter Olympics site "www.Sochi2014.ru" for the latest completion information.

LIMITED DISTRIBUTION

Distribution authorized to DOD, IAW 10 U.S.C. §§ 130 & 455. Release authorized to U.S. DOD contractors, IAW 48 C.F.R. § 252.245-7000. Refer other requests to: Headquarters, NGA, ATTN: Release Officer, Mail Stop S82-01AD 7500 Geoint Drive, Springfield, VA 22150-7500. Destroy IAW DODI 5030.59. Removal of this caveat is prohibited.

UNCLASSIFIED//LIMITED DISTRIBUTION

<p>SAMPLE 100 METER GRID SQUARE</p>	<p>10 METER REFERENCE</p>
	<ol style="list-style-type: none"> 1. Read large numbers between the VERTICAL grid line left of point and estimate tenths (10 meters) from point to 123.4 2. Read large numbers between the HORIZONTAL grid line below point and estimate tenths (10 meters) from point to point. 567.8 <p>Example: 1234567.8</p>
<p>100,000 M. SQUARE IDENTIFICATION</p>	<p>WHEN REPORTING ACROSS A 100,000 METER LINE, PREFIX THE 100,000 METER SQUARE IDENTIFICATION IN WHICH THE POINT LIES.</p>
<p>FJ</p>	<p>Example: FJ1234567.8</p>
<p>GRID ZONE DESIGNATION</p>	<p>WHEN REPORTING OUTSIDE THE GRID ZONE DESIGNATION AREA, PREFIX THE GRID ZONE DESIGNATION.</p>
<p>37T</p>	<p>Example: 37TFJ1234567.8</p>

Source Information
Image base: ©2014 DigitalGlobe
Vector data: ©2012 NavTeq
Venue information: www.Sochi2014.ru
Boundary information: Digital International Boundaries, Level 2

Ellipsoid: World Geodetic System 1984
Grid: 100 Meter UTM Zone 37
Projection: Transverse Mercator
Horizontal Datum: World Geodetic System 1984
Image Date: 02 January 2014

Map Date: 14 January 2014

Note
 Caution - this product is NOT to be used for precision navigation, positioning, or targeting. This is a custom GEoint product and may not conform to standard NGA product specifications or U.S. Board on Geographic Names standards.



- ### Legend
- | | |
|--|---------------------|
| | Elevation in meters |
| | Visitor services |
| | Venue entrance |
| | Tunnel portal |
| | Cableway station |
| | Tram 3S tower |
| | Communication tower |
| | Gondola cable |
| | Tram 3S cableway |
| | Perimeter fence |



Location Map

