



(U) For comments or questions, contact the JRIC by phone (562) 345-1100 or e-mail jric@jric.org. Citations and photo sources available on request.

(U) FOR FEEDBACK [CLICK HERE](#)

(U//LES) IDENTIFYING MEXICAN MAFIA MEMBERS AND ASSOCIATES

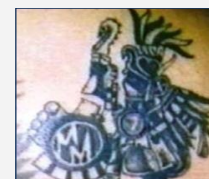
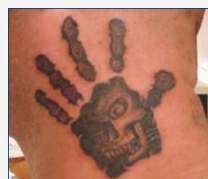
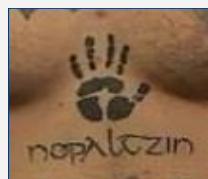


The JRIC Snapshot

(U//LES) Humming bird and Marilyn Monroe tattoos may have a nexus to the Mexican Mafia, while “G Shields” (Aztec warrior shields) and mariposas (butterflies) may be decreasing in popularity. As certain tattoos sported by Mexican Mafia members and supporters become mainstream, and because California Department of Corrections is known to use certain tattoos as validation points, Mexican Mafia members may introduce new tattoos to make it difficult for law enforcement and correctional officers to identify membership or affiliation with the group. Tattoos are also increasingly disguised within other tattoos, which can make them more difficult to easily identify.

(U//LES) Sureño, Southsider, and Sur may be the most common tattoos indicating loyalty or association with the Mexican Mafia. “Sureño” refers to foot soldiers who follow orders made by the Mexican Mafia; “Southsiders” only pay taxes; and “SUR,” Spanish for “south,” represents allegiance to the Mexican Mafia. (Photos: Los Angeles County Sheriff’s Department)

(U) INDICATION OF MEXICAN MAFIA MEMBERSHIP



(U) Black Hand

(U//LES) Only la EME brothers are allowed to obtain the black hand tattoo. It is considered an honored privilege, but not a requirement, to display the black hand. Inspired by La Costra Nostra’s (Italian Mob) Black Hand of Death.

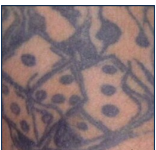
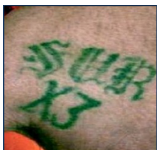
(U) la EME

(U//LES) Translates to the letter “M” in Spanish; a shorthand or secretive way of displaying allegiance to the Mexican Mafia.
NOTE: “EME-SA” indicates membership to MS-13, not Mexican Mafia.

(U) MM

(U//LES) Abbreviation can be potential indication of association or membership to the Mexican Mafia without directly identifying the organization.

(U) INDICATION OF POSSIBLE MEXICAN MAFIA ASSOCIATION



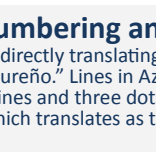
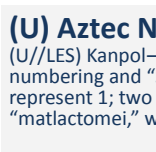
(U) 13 (and variations)

(U//LES) Signifies the 13th letter of the alphabet, M, which is pronounced “la EME” in Spanish. Can also be spelled out as “trece.”



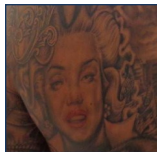
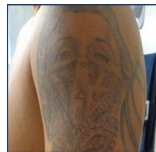
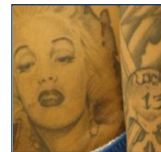
(U) Lips

(U//LES) Possibly a covert method that may signify 13 and loyalty to Mexican Mafia: the bottom lip is similar in shape to 1 while the top lip is similar in shape to 3. The color blue is an indication of loyalty to Mexican Mafia.



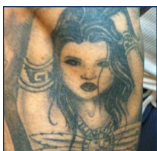
(U) Aztec Numbering and Kanpol

(U//LES) Kanpol—directly translating as “south great”—references Aztec numbering and “Sureño.” Lines in Aztec numbering represent 5, and dots represent 1; two lines and three dots add to 13. Tattoos of the Aztec word “matlactomei,” which translates as thirteen, may also be used.



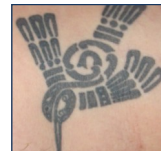
(U) Marilyn Monroe

(U//LES) May indicate association with or membership to Mexican Mafia, as Marilyn Monroe’s initials represent “MM.” Recent reporting suggests this tattoo is most likely found on non-validated associates.



(U) Aztec Warrior Shield

(U//LES) Both Norteños and Sureños identify with Aztec culture and beliefs, but the Aztec warrior shield is most commonly found on Sureños. Advocates an ideology that Sureños are warriors or soldiers, rather than criminals, participating in a worthy cause for their race and culture.



(U) Hummingbird and Mariposa

(U//LES) Emerging reporting suggests a shift toward using hummingbird tattoos to portray Huitzilopochtli, an Aztec god of war, to represent being a soldier of Mexican Mafia. Mariposas may also indicate association or membership to Mexican Mafia. Curving of butterfly wings may represent “MM.” Most likely to be seen on “first generation” Mexican Mafia associates.