



# **KENTUCKY DIVISION OF EMERGENCY MANAGEMENT BUILDING PRIVATE SECTOR PARTNERSHIPS / NLE-11**

# A SINGLE MISSION

---

**‘Getting Business Back On-line’**

# PROGRAM OVERVIEW

---

- Developed to enhance the capabilities of KYEM to provide critical infrastructure response during disasters.
- Fosters business public-private partnerships in prevention, preparation, response and recovery from crisis events in the Commonwealth.
- Engages National, Regional, State & Local business and industry.



# PROGRAM OVERVIEW

---

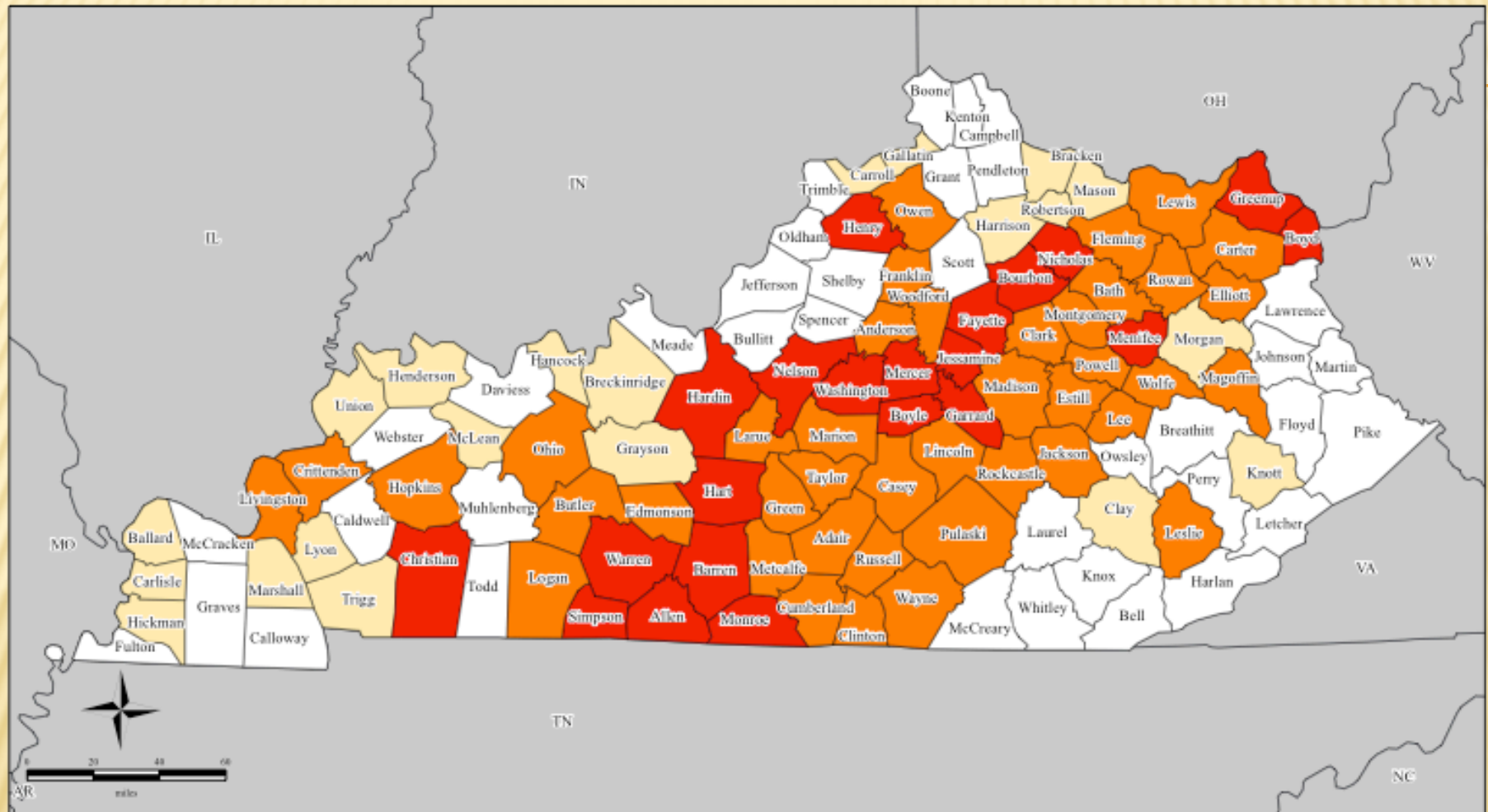
- Includes ‘Decision Maker’ representatives.
- Builds from the bottom up.
- Determines the NEEDS of private sector during a crisis event.
- Provides for training, exercise and technology advancements.

# FLOODING EVENT – DR 1912

---

# FEMA-1912-DR, Kentucky

## Disaster Declaration as of 06/16/2010



Location Map



Legend

### Designated Counties

- No Designation
- Public Assistance
- Individual Assistance
- Individual Assistance and Public Assistance

*All counties in the Commonwealth of Kentucky are eligible to apply for assistance under the Hazard Mitigation Grant Program.*



**FEMA**

*FIS Mapping & Analysis Center  
Washington, DC  
06/17/10 - 8:05 AM EDT*

*Source: Disaster Federal Registry Notice  
Amendment No. 6 - 06/16/2010*

# BUSINESS SUPPORT SECTORS

---

- Transportation
- Communications
- Utilities
- Commodities
- Infrastructure / Logistics
- Food / Hospitality



# KYEM PRIVATE SECTOR GROUP

---

- UPS
- Target
- Wal-Mart
- NIMS Support Center
- Estes Express Lines
- Al. J. Schneider Co.
- Continuum Recovery
- Time Warner Cable
- KY Assoc. of Electrical Cooperatives
- Jefferson County Public Schools
- UofL Dept. of Engineering
- E.ON U.S.
- Windstream Comm.
- SEERN
- Grainger
- U.S. DHS
- Paducah & Lou Railway
- KY International Convention Center
- Toyota Motors
- Brantley Security Services



# KYEM PRIVATE SECTOR GROUP

---

- Lowe's
- Home Depot
- Sprint – Nextel
- CSX Railway
- Transit Authority River City
- ATT
- FEMA Region IV
- Louisville Water Co.
- KY Hospital Assoc.
- EAP KY Power
- Perdue Farms
- Kroger
- American Commercial Ln
- Norton Healthcare
- Baptist Healthcare
- Orr Safety
- FedEx
- Brown-Forman
- Shelby Energy Coop
- Louisville Regional Airport Authority
- Securitas
- Windstream Communications
- Yum Brands

# BUSINESS EOC

---

- Seat At The Table
- Virtual Application

# BUSINESS EMERGENCY OPERATIONS CENTER



New Jersey Business Force at NJIT - Dr. Michael Chumer & Col Hank Straub



**FEMA NPSWG**

---

# **National Level Exercise 2011**

# NATIONAL PRIVATE SECTOR WORKING GROUP (NPSWG)

National Level Exercise (NLE) 2011

**Mr. Bob Dix**

Chair, NLE 2011 NPSWG

Vice Chair

National Level Exercise Liaison

Partnership for Critical Infrastructure  
Security

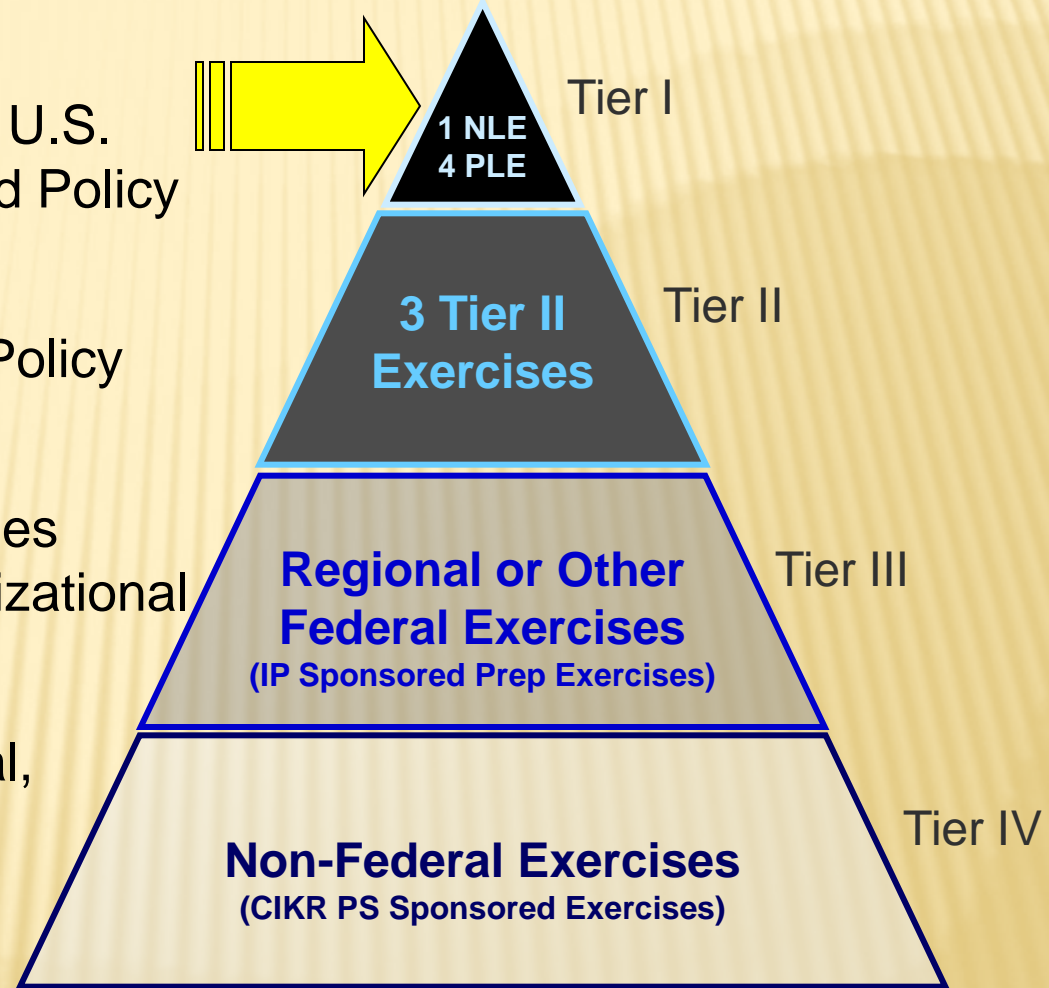
# NATIONAL EXERCISE PROGRAM TIERS

**Tier I:** White House directed, U.S. Government-wide Strategy and Policy Focus

**Tier II:** Federal Strategy and Policy Focus

**Tier III:** Other Federal Exercises Operational, Tactical or Organizational Focus

**Tier IV:** State, Territorial, Local, Tribal or Private Sector Focus

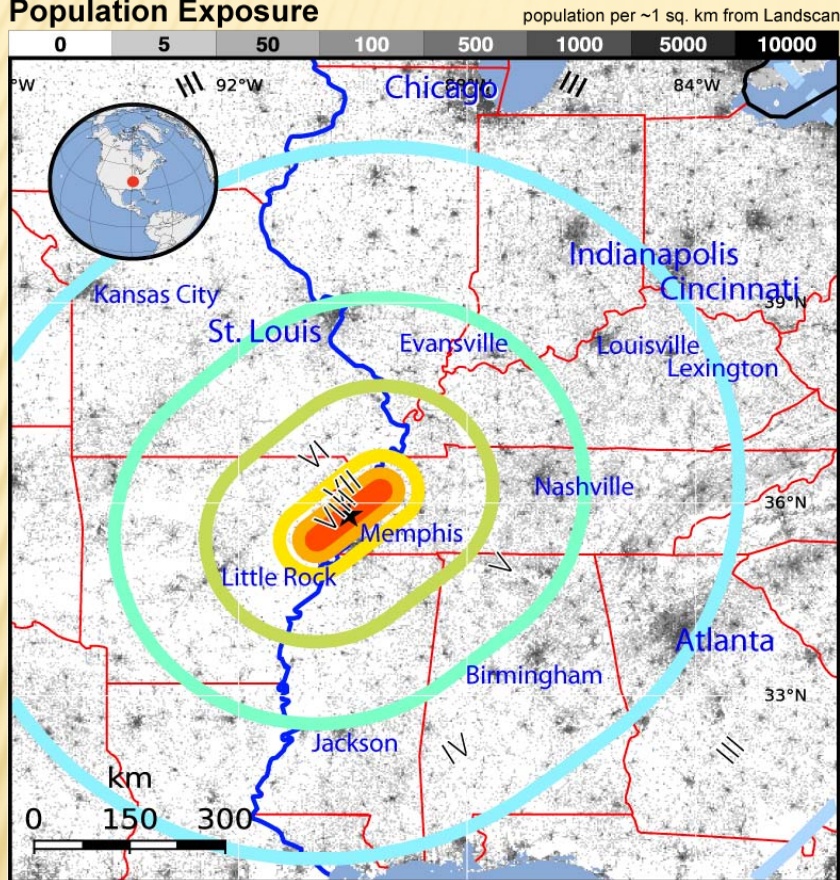




# USGS ANALYSIS: SOUTHWEST M7.7

EST. ECONOMIC LOSSES: \$10-\$100B, EST. EXPOSED POPULATION: 654K (≥VII)

## Population Exposure



## Selected Metro Area

Memphis (1.3 M)

Little Rock (0.7 M)

Nashville (1.6M)

Evansville (0.3 M)

St. Louis (2.8 M)

Jackson (0.5 M)

Birmingham (1.1 M)

Louisville (1.3 M)

Indianapolis (1.7 M)

Lexington (0.5 M)

Kansas City (2.1 M)

Cincinnati (2.1 M)

Atlanta (5.5 M)

Chicago (9.5 M)

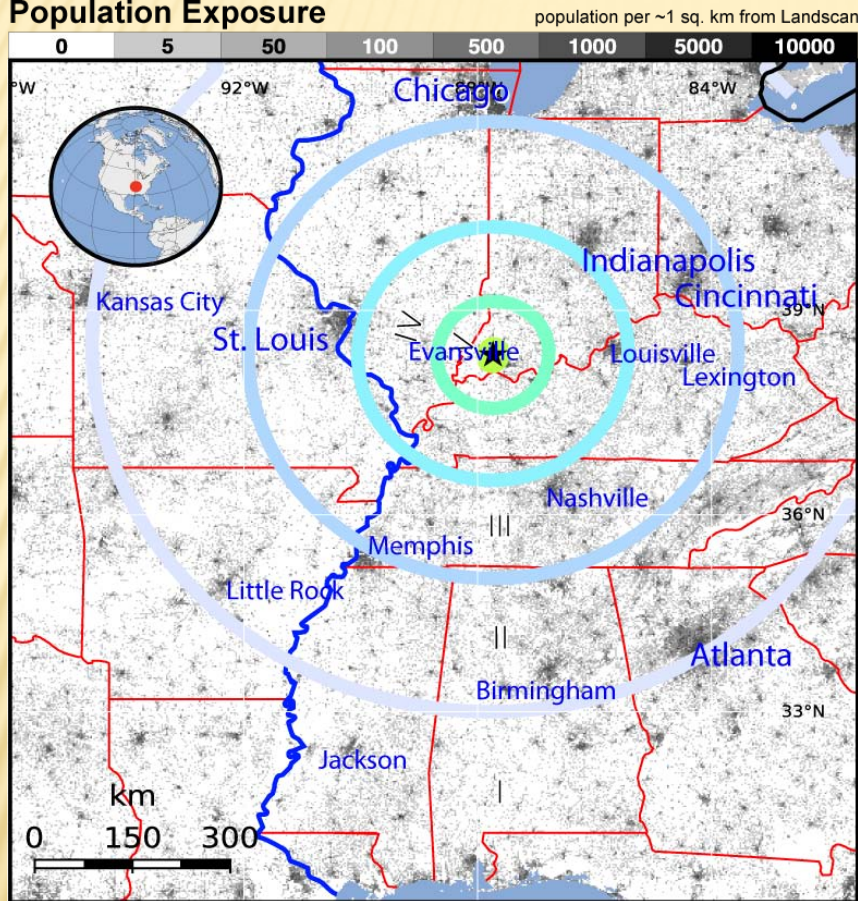
ESTIMATED POPULATION EXPOSURE (k = x1000)		- *	42,222k*	30,036k	9,664k	3,287k	487k	116k	51k	0
ESTIMATED MODIFIED MERCALLI INTENSITY		I	II-III	IV	V	VI	VII	VIII	IX	X+
PERCEIVED SHAKING		Not felt	Weak	Light	Moderate	Strong	Very Strong	Severe	Violent	Extreme
POTENTIAL DAMAGE	Resistant Structures	none	none	none	V. Light	Light	Moderate	Moderate/Heavy	Heavy	V. Heavy
	Vulnerable Structures	none	none	none	Light	Moderate	Moderate/Heavy	Heavy	V. Heavy	V. Heavy



# USGS ANALYSIS: WABASH TRIGGERED EVENT M6.0

EST. ECONOMIC LOSSES: <\$1M, EST. EXPOSED POPULATION: 23K ( $\geq$ VI)

## Population Exposure



## Selected Metro Area

Evansville (0.3 M)

Louisville (1.3 M)

Chicago (9.5 M)

Nashville (1.6M)

St. Louis (2.8 M)

Indianapolis (1.7 M)

Lexington (0.5 M)

Cincinnati (2.1 M)

Memphis (1.3 M)

Little Rock (0.7 M)

Birmingham (1.1 M)

Atlanta (5.5 M)

Kansas City (2.1 M)

Jackson (0.5 M)

ESTIMATED POPULATION EXPOSURE (k = x1000)		27,371k*	54,890k	4,820k	641k	23k	0	0	0	0
ESTIMATED MODIFIED MERCALLI INTENSITY		I	II-III	IV	V	VI	VII	VIII	IX	X+
PERCEIVED SHAKING		Not felt	Weak	Light	Moderate	Strong	Very Strong	Severe	Violent	Extreme
POTENTIAL DAMAGE	Resistant Structures	none	none	none	V. Light	Light	Moderate	Moderate/Heavy	Heavy	V. Heavy
	Vulnerable Structures	none	none	none	Light	Moderate	Moderate/Heavy	Heavy	V. Heavy	V. Heavy

# NATIONAL-LEVEL EXERCISE 2011

- **Focus:** Domestic non-terrorism; Major Earthquake - specific focus on a catastrophic earthquake in the New Madrid Seismic Zone (NMSZ)
  - Concept for exercise established in 2006 - follow on to FEMA NMSZ Catastrophic Planning Initiative
- **Proposed Scope:** Integrated series of events capstoned by a Functional Exercise (FE) that will include linked Full-Scale elements
- **Proposed Functional Exercise Conduct:** Week of May 16, 2011 (FEMA Regions: IV, V, VI, VII; States: AL, AR, IL, IN, MS, MO, TN, KY)
  - Exercise may include many counties, 8 NMSZ states and 4 regions as well as multiple EMAC states and the federal interagency
  - 4 days of real-time exercise play from May 16-19; May 20 reserved for hot washes and initiation of recovery discussions



# NLE 11 OVERARCHING OBJECTIVES

- NLE 11 will focus the exercise on:
  - Communications
  - Emergency Operations Center Management
  - Critical Resource Logistics and Distribution
  - Citizen Evacuation & Shelter-in-Place
  - Emergency Public Information & Warning
  - Medical Surge
  - Mass Care (Sheltering, Feeding, and related Services)
  - Economic and Community Recovery

# PROPOSED NPSWG CAPABILITIES

- Communications
- Intelligence and Information Sharing and Dissemination
- Critical Infrastructure Protection
- Emergency Operations Center (EOC) Management
- Critical Resource Logistics and Distribution
- Citizen Evacuation and Shelter-in-Place
- Emergency Public Information and Warning
- Medical Surge
- Mass Care (Sheltering, Feeding, and Related Services)
- Economic and Community Recovery

# PARTICIPANTS, LOCATIONS, LEVELS OF PLAY

---

- National, Regional, State, Local, Sector
- Company headquarters
- Company operation centers
- Liaisons in operation centers
- Levels of Play
  - Days, hours
  - Simulation



# PRIVATE SECTOR TTX

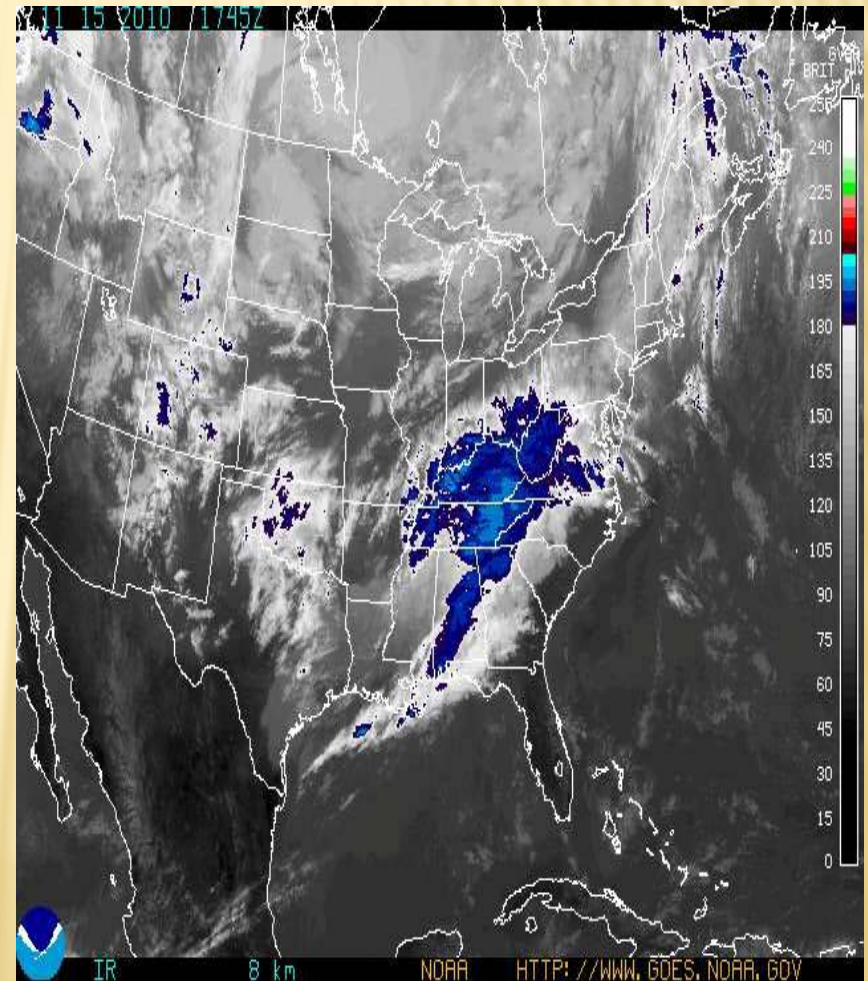
---

NOVEMBER 22, 2010

# MAY 16, 2011

Kentucky has experienced large amounts of rain that has led to flooding in the Ohio Valley Region over the past 3 days.

Today's forecast is a high of 69 degrees, a low of 43 degrees with scattered showers in the AM and heavy rains in the PM.



# THE BIG ONE

---

A 7.7 magnitude earthquake struck the southwest extension of the New Madrid Seismic Zone (NMSZ), creating disastrous conditions in an area that encompasses approximately 30,000 square miles and affects a population of approximately 12 million people.

Due to the magnitude and dimensions of the disaster, it is difficult to get an accurate picture of the extensive casualties and damage in the affected areas.

Critical Infrastructure and Key Resources (CI/KR) in most of the affected areas have sustained irreparable damage. (This includes State and urban area response command, control, coordination, and communications.)

The majority of all landline, cellular, and radio-repeater communication are inoperable in the affected areas.



# ASSESSMENT, RESPONSE & MOBILIZATION

- Injuries-6,700
- Deaths-325
- Citizens without water-79,000
- Citizens without power-328,000
- Citizens seeking Shelter-67,000



# ASSESSMENT, RESPONSE & MOBILIZATION

---

Currently the only reliable method of communication is by HAM radio. Cell phone service that is operational is being disrupted by the number of calls being made. Many bridges have been reported inoperable and only 10% of the initial assessment has been completed. MSR Wildcat is currently inoperable due to bridge failure. Main fires have been reported in the WKY area due to pipeline breaks.

# BACK BRIEF

---

What is your biggest issue?

What is your biggest asset?



# BACK BRIEF BY SECTORS

---

# ESI WebEOC 7.2 – VIRTUAL TEMPLATE

PHASE III - Resource Mgmt/Medical Surge Ops - Windows Internet Explorer provided by...

Entry Sort Filter

## New Record

Save Spell Check Cancel Retrieve Record

Report As

**PHASE III - Resource Mgmt/Medical Surge**

\* KY WebEOC Admin

**Question 1:** What do you need to **KNOW** to develop an assessment?

**Question 2:** What do you need to **DO** to develop an assessment?

**Question 3:** How can the state help you develop an assessment?

**Question 4:** What can you do to help the state establish a Common Operating Picture?

What was the biggest **ISSUE** you faced in this phase?

# PHASE I – ASSESSMENT & MOBILIZATION

Sector	Q1: What do you need to KNOW to develop an assessment?
Commodities	<p>GROUP: condition of staff/clients (personnel), infrastructure conditions, communications important immediately</p> <p>JCPS: Power availability, road blockages, communication available? If so, what types? Building and employee conditions (structure damage, personnel injuries, etc.)</p> <p>Grainger: first priority is our people; people, power, water, systems; specific affected area(s)</p> <p>Brantley: infrastructure conditions for clients; need communications immediately</p>
Communications	<p>1. What communications are still in play? Is it still sending a signal? (Virtual side)</p> <p>2. Look at the physical side.</p> <p>3. What do we need to replace, what's damaged.</p> <p>4. Where are things damaged?</p>
Food and Lodging	<p>Time of day, day of the week,</p> <p>Communications availability, radio, TV, Internet, phone,</p> <p>Roadways open</p> <p>Power</p> <p>Timeline for accessibility</p>
Infrastructure-Logistics	<p>Transportation and Highway/Interstate Conditions/Status</p> <p>Communication Status</p> <p>Utilities (Building/Water) Conditions</p> <p>List of Technical Specialists to rapidly deploy to the affected area</p>
Transportation	<p>KYEM's initial assessment. Informational packet from experts saying what is expected, then after event what actually happened. What are expected communication capabilities? What tools and resources do they (other private sector participants) have that we can use during assessment?</p>
Utilities	<p>Accessibility of roads, bridges. aerial assessment. Affected personnel and agency offices.</p>



# PHASE I – ASSESSMENT & MOBILIZATION

Sector	Q2: What do you need to DO to develop an assessment?	
Commodities	Communication, known priority communication areas (ex. Papa Johns Stadium, etc.); roads cleared for access to infrastructure	
Communications	<ol style="list-style-type: none"><li>1. Isolate damaged area</li><li>2. Face to face communication with other departments or agencies</li><li>3. Physically look at the damage (using whatever means available. Satellites, helicopters, etc)</li></ol>	
Food and Lodging	Contact with all affected staff or employees. Dispatch available employees for initial damage assessment.	
Infrastructure-Logistics	Information Accountability	
Transportation	Establish communications with local impacted areas. Maintain a list of consulting firms to use as resources after the event.	
Utilities	SCADA. Send out two man teams, aerial assets through the state.	

# PHASE IV RESPONSES

PHASE IV - Shelter Ops and Mass Care Display - Windows Internet Explorer provided by Kentucky National Guard

Private Sector TTX

PHASE IV - Shelter Ops and Mass Care

Q1 Q2 Q3 Q4 Issues Assets

Communications	
Question 1	<ol style="list-style-type: none"> <li>1. Where can we set up?</li> <li>2. Can we get alternate power to locations?</li> <li>3. Can we set up phone banks to shelters?</li> </ol>
Question 2	<ol style="list-style-type: none"> <li>1. Power</li> <li>2. Phones</li> <li>3. Ways to get rid of waste (disease potential)</li> </ol>
Question 3	<ol style="list-style-type: none"> <li>1. Communicating with other organizations such as what the News Station can bring to the table.</li> <li>2. Guidance</li> <li>3. Recovery Council</li> <li>4. Organized effort</li> <li>5. State takes a leadership role and trains the Businesses</li> </ol>
Question 4	<ol style="list-style-type: none"> <li>1. Willingness to work together for the betterment of all.</li> <li>2. Rebuild the area as much as possible</li> </ol>
Issue	<ol style="list-style-type: none"> <li>1. Recovery Management</li> <li>2. Politics</li> </ol>
Asset	<p>Communication</p> <p>Collective knowledge and experience that everyone can bring to the table</p>
Transportation	
Question 1	What locations? What quantities? How accessible? Updates of infrastructure.
Question 2	Make sure there is supports in place for current workforce.
Question 3	Passing information for what routes are available. Connect provider of resources with private sector member that has the best mode of transportation.
Question 4	Moving products and resources
Issue	Access to resources.
Asset	Delivery of resources
Food and Lodging	
Question 1	<p>Staffing needs</p> <p>Number of expected shelterees/ occupants</p> <p>Special need requirements</p> <p>Medical needs</p> <p>Duration of stay</p> <p>Risk and types of exposure</p>
Question 2	<p>Segregation of shelterees, security</p> <p>Crisis counseling / KCCRB</p> <p>Medical Staff</p>

<<<< << Page 1 of 1 ☐ Disable Refresh >> >>>>

# PLENARY SESSIONS





# PLENARY SESSIONS



# BREAK OUT SESSIONS BY SECTOR



KENTUCKY DIVISION OF EMERGENCY MANAGEMENT



# BACK BRIEF SESSIONS



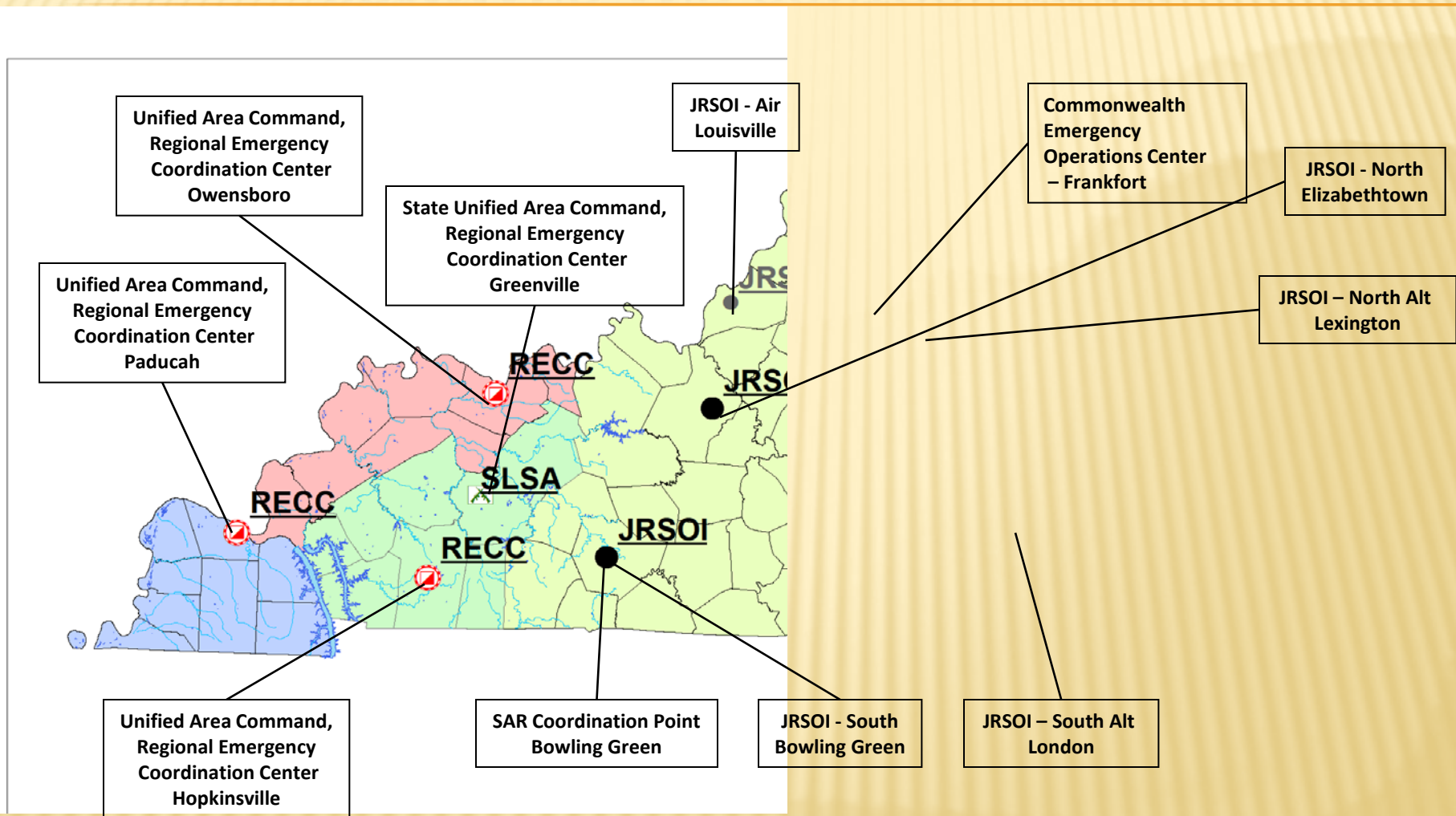


# KYEM New Madrid Assessment

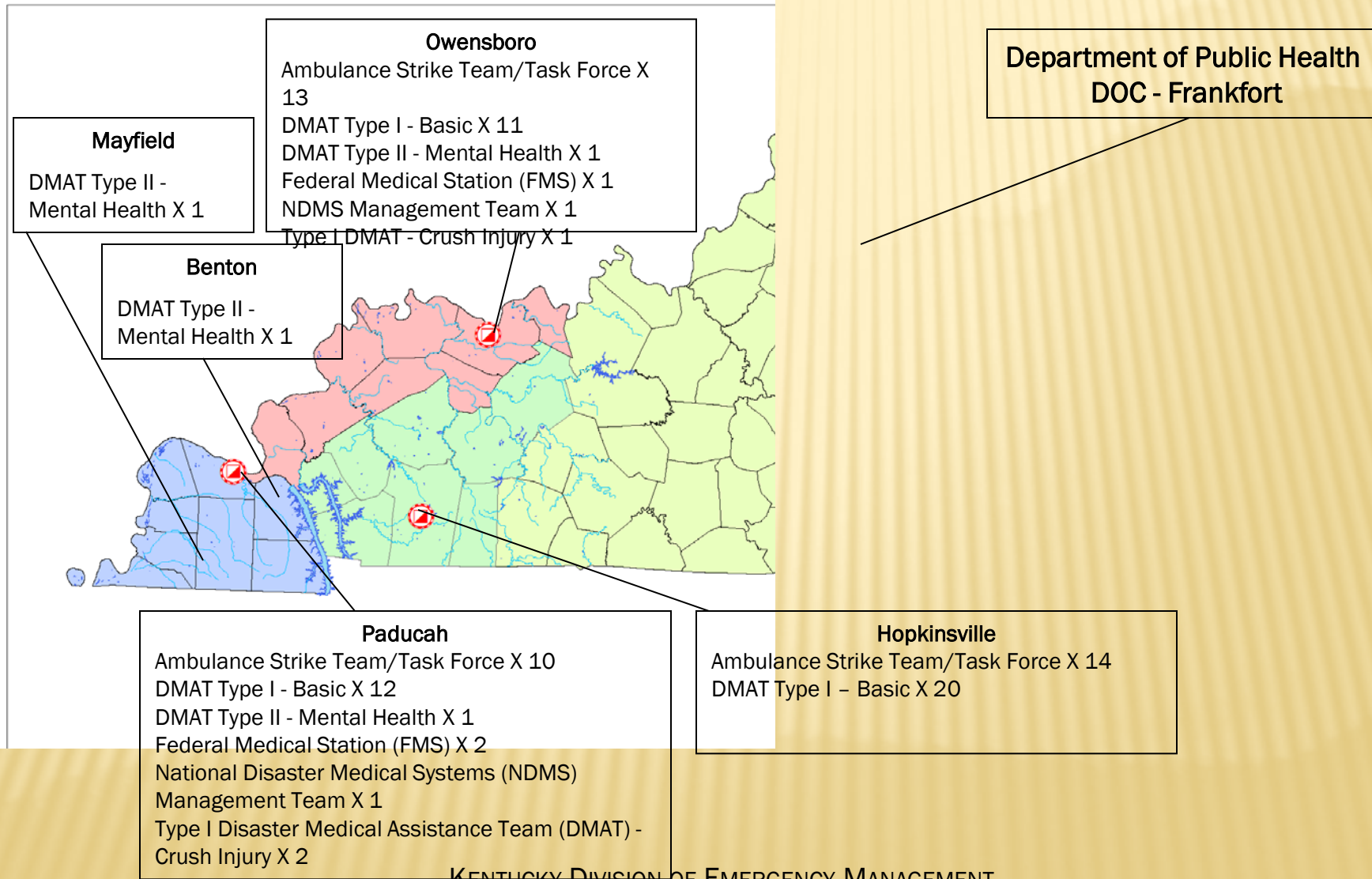
---

- Approximately 235,000 people will seek shelter
- Estimated 435 25 Ton truckloads of commodities (water, ice, MREs) will be required to support the at risk population
- Over 76,000 households are without potable water service
- Nearly 330,000 households are without electric power (Day 1)
- There are approximately 6,500 injuries and 300 deaths
- Approximately 68,500 buildings are damaged
- Over 250 bridges are damaged

# KENTUCKY EMERGENCY MANAGEMENT COMMAND AND CONTROL PLAN

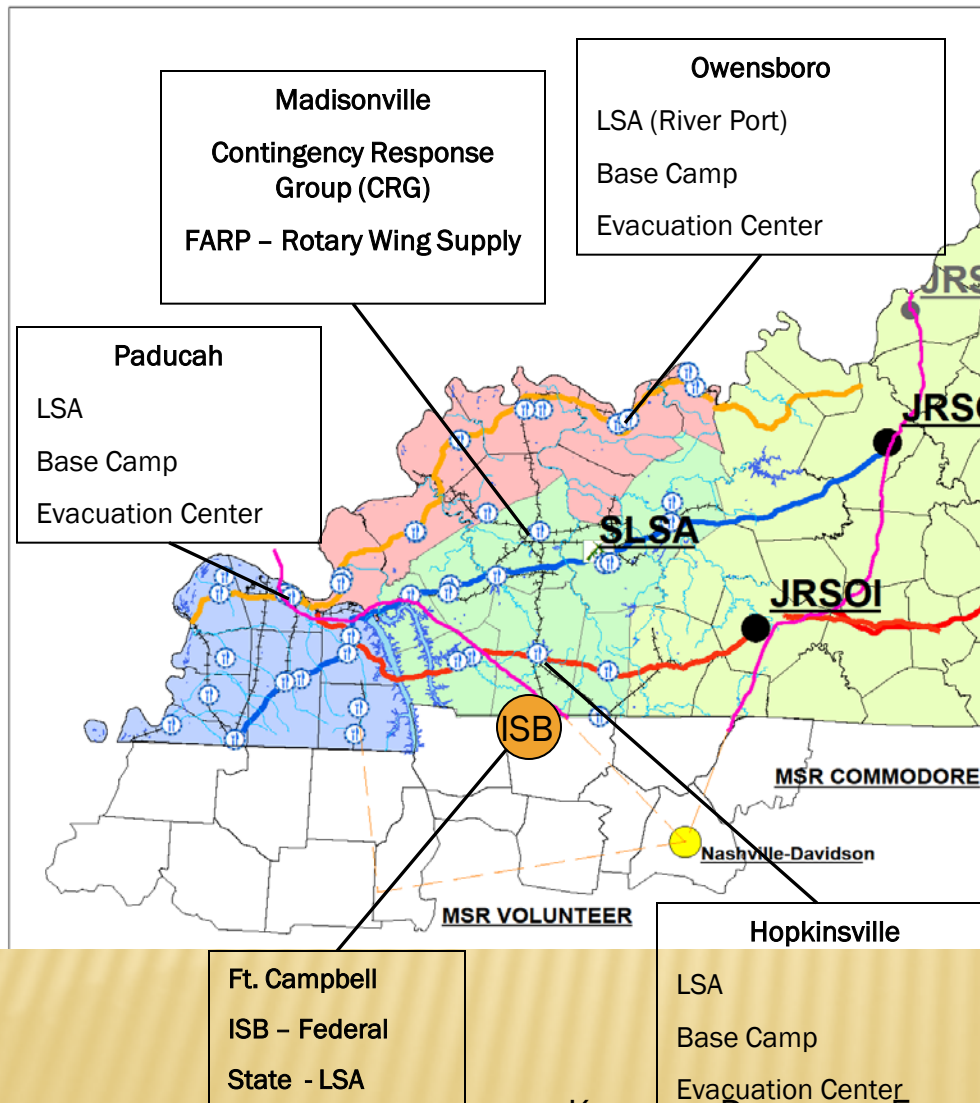


# KENTUCKY EMERGENCY MANAGEMENT COMMAND AND CONTROL PLAN





# KENTUCKY EMERGENCY MANAGEMENT COMMAND AND CONTROL PLAN



KENTUCKY DIVISION OF EMERGENCY MANAGEMENT



# **KENTUCKY DIVISION OF EMERGENCY MANAGEMENT BUILDING PRIVATE SECTOR PARTNERSHIPS / NLE-11**