

# PA Fusion Update

Meghan Treber  
Special Assistant to the Governor  
Emergency Preparedness

# History

- Fusion Centers funded through HSGP following 9/11 as a means to collect, analyze and disseminate data from wide-array of sources
- 9/11 Commission recommendation
- DHS priority area
- Common intelligence picture

# PA History

- PaCIC
- SEOC
- OHS
- Local Intelligence Gathering

# What is a Fusion Center?

**Fusion Center** – a collaborative effort of two or more agencies that provide resources, expertise, and/or information to the Center with the goal of maximizing the ability to detect, prevent, apprehend and respond to criminal and terrorist activity. Evolving quickly to **All Crimes, All Threat, All Hazards** approach throughout Fusion Centers.

## Functions

Compile, blend, analyze, and disseminate information of various types

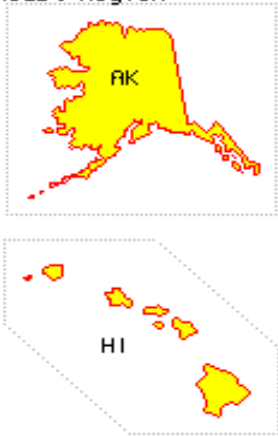
Support efforts to anticipate, identify and prevent criminal or terrorist activity

**Safeguard the homeland and prevent criminal activity**

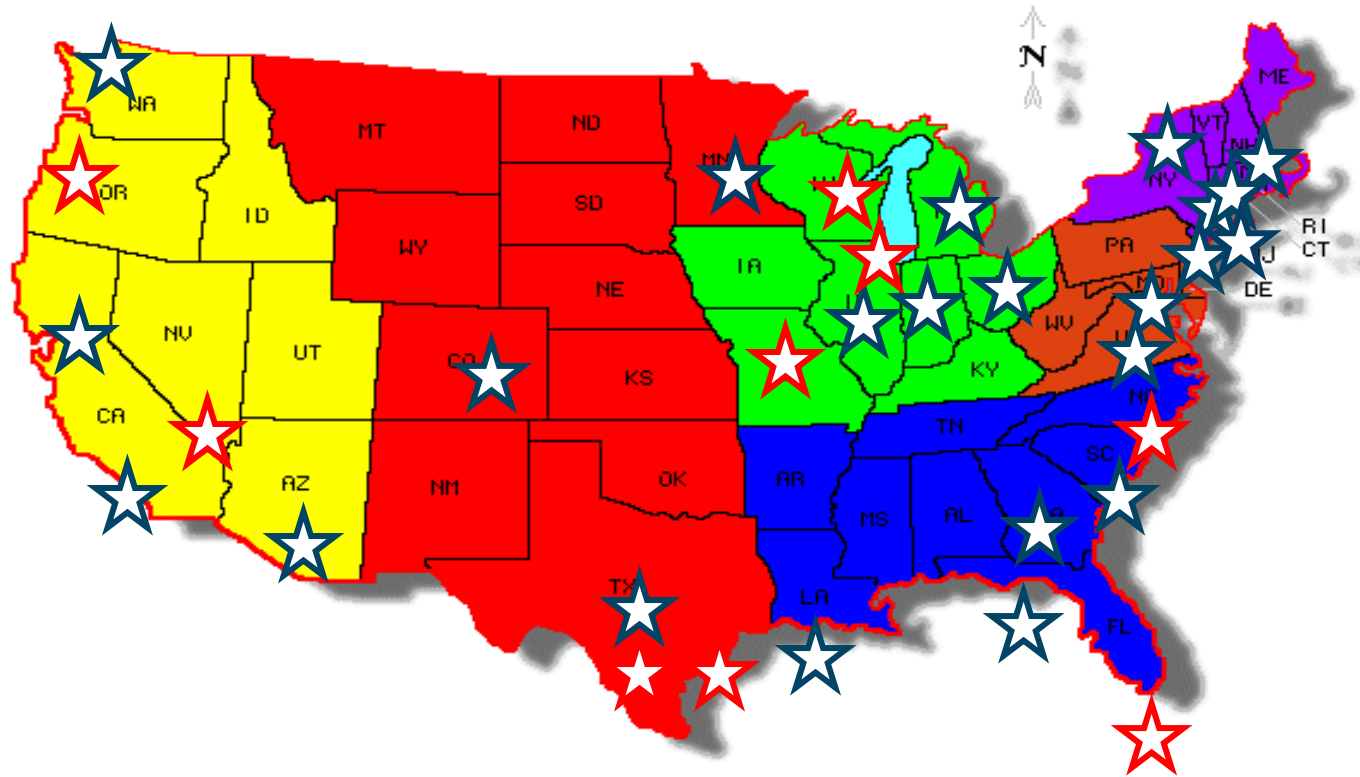
# State and Local Fusion Centers

## Regional Map

- Yellow - Western Region
- Red - Central Region
- Green - Midwest Region
- Blue - Southeast Region
- Brown - Nat'l Capital Region
- Purple - Northeast Region



## Current and Planned Deployments



- ★ Deployed
- ★ Planned

**Current deployment = 25 officers in 23 sites**  
**Planned FY08 total = 35 sites**  
**Out year total = as many as 70 sites**

# Current Procurement Process

- Request For Information (RFI) – Issued for industry best practices – responses will be used for evaluation of RFQ.
- Request for Quote (RFQ) – Issued for the development of a business plan.
- Request for Proposal (RFP) – to be issued to implement the business plan developed from the RFQ.

# Current Process

- Business Plan complete
- Presented to key Executives tomorrow
- Next Step Determination

# Vision

- The Fusion Center is a dedicated system for the purpose of gathering, validating, analyzing, and disseminating information that will improve the overall preparedness and safety of the citizens and assets of Pennsylvania.



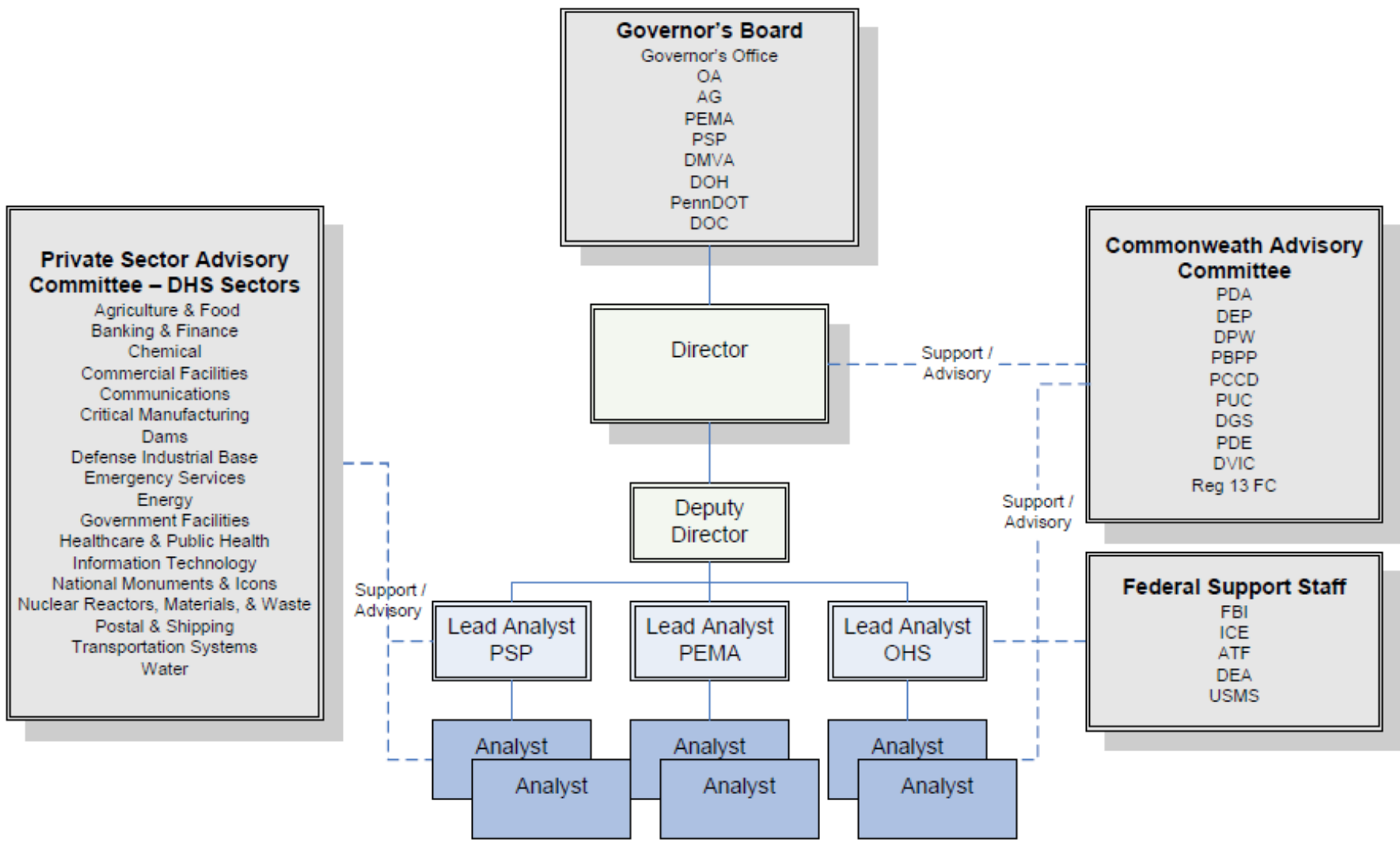
# Mission

The mission and purpose of the Fusion Center is to provide a centralized, comprehensive, multi-discipline, information and intelligence sharing statewide enterprise capable of fusing all hazards information to produce indicators, identify threats, and issue warnings to enhance the operational effectiveness and efficiency of the entities involved in prevention, preparedness, response, and recovery activities.

# Initial Objectives

- Establish the enterprise
- Ensure the enterprise is in line with and meets or exceeds all requirements outlined in the Fusion Center Guidelines, Baseline Capabilities, and CIKR Annex
- Have a robust analytical capability
- Protect citizens' rights and civil liberties
- Ensure the enterprise has an effective interface with partner agencies
- Develop a sustainability plan

# Proposed Organizational Structure



# Daily Operations

- Fully operational from 0900 to 1700 Monday through Friday, with on-call analysts after hours and on weekends
- Three sections: *Threat Analysis, Early Warning Alerts, and Requests for Information (RFIs)/Case Support*
- All-hazards approach to the intelligence cycle
- Focus on public safety, counterterrorism, criminal interdiction, public health threats, officer or public safety threats, natural disasters, and any other dangers the Fusion Center governance board determines important and within its stated mission

# Product Output

- Short-form intelligence bulletins
- Long-form intelligence reports
- Threat assessments on relevant industries and infrastructure
- Early warning alerts
- Suspicious activity synopses
- Strategic analysis on portfolio topics
- Situational awareness reports
- Pattern-trend analysis
- Daily, weekly, or monthly reports and briefings
- Quarterly and annual trend-assessment reports

# Threat and Analysis

- Daily reports for dissemination to key stakeholders and decision makers in the emergency services and critical infrastructure sectors.
- Sensitive information would be distributed to the law enforcement community in “Law Enforcement Sensitive” reports via email or in-vehicle mobile data computers (MDCs).

# ▶ Watch Center/Early Warning Alerts

- In the event of an actual or suspected criminal or terrorist attack, the Fusion Center would coordinate with members of the affected critical infrastructure sectors, PEMA, the JTTF and DHS to ensure a coordinated intelligence exchange and to disseminate information and “best practices” in order to prevent or mitigate further attacks.

## Requests for Information/Case Support

- Routine requests for information and case support. These analysts would assist agencies by providing the requesting agency with link analysis, database searches, and further support through the coordination of information between local, state, and federal agencies



# Fusion Liaison Officer Program

- Strengthen information sharing and enhance multi-jurisdictional partnerships
- Provide a platform of local representatives to share information related to local and global terrorist and criminal threats and potential incidents
- Create an expansive statewide network of personnel by combining local emergency responders and linking them to federal and state assets

# Information Sources

FEDERAL AGENCIES	FBI (JTTF and FIG) US Secret Service NORTHCOM US Marshals Service DHS (, NIC, HITRAC)	STATE AGENCIES	State Departments of Agriculture Public Health and Environment Education Corrections Military Affairs Revenue; Cyber Security; and JNET	
FUSION CENTERS	All current local and state fusion centers	INTERNET PORTAL	CCIC/NCIC DHS Info Bulletins	HSIN JRIES LEO
LOCAL JURISDICTIONS	Local law enforcement agencies Fire departments County emergency managers		FBI Bulletins FPS HSDN	RISS RMIN SIPRNET
PRIVATE CITIZENS	Private Citizens would be encouraged to contact the and/or the PaCIC via 24-hour phone numbers or through an interactive website.			
CRITICAL INFRASTRUCTURE SECTOR REPRESENTATIVES	Representatives from each of the eighteen critical infrastructure sectors and key resource assets			

# Timeline

QUARTER	MILESTONES TARGETED AND KEY CAPABILITIES
Q1	<p>Fusion Center entity established within the Commonwealth with a Director and Deputy Director</p> <p>Governance structure established</p> <p>Funding and other commitments in place</p> <p>MOU's present</p> <p>Budgets and plans developed</p> <p>Work approved to proceed</p>
Q2	<p><b>OPEN FOR BUSINESS</b></p> <p>Facilities ready</p> <p>Personnel policies developed</p> <p>Personnel recruited and on-board midway through quarter - able to perform fusion analysis using existing contributed tools and sources, perform outreach, establish policies and procedures, assist in defining IT systems needs etc</p> <p>Fusion outreach initiated</p> <p>Security and privacy policies developed</p> <p>CONOPS procedures, goals and products identified</p> <p>IT systems specification and development underway</p>
Q3	<p><b>OPEN FOR BUSINESS</b></p> <p>Continued refinement of CONOPS, products and services</p> <p>Continued outreach</p> <p>Personnel perform fusion analysis using existing contributed tools and sources and new tools, perform outreach, establish policies and procedures, assist in defining IT systems needs etc</p> <p>First iteration IT systems include initial portal presence and collaboration tools, document repository</p>
Q4	<p><b>OPEN FOR BUSINESS</b></p> <p>Continued refinement of CONOPS, products and services</p> <p>Personnel perform fusion analysis using existing contributed tools and sources and new tools, perform outreach, establish policies and procedures, assist in defining IT systems needs etc</p> <p>Start planning and development of SAR program</p> <p>Second iteration IT systems include richer portal presence and knowledge base and first search and analytic tools, first data architectures / sharing implemented allowing access to data from high priority sources</p>

# Next Steps

- Hire Fusion Center Director, Deputy Director and Lead Analyst
- Issue Executive Order creating the center
- Establish the Governing Boards and the other supporting committees
- Develop communication plan, privacy policy and Operations plan
- Remodel facility to support the Fusion Center
- Develop an IJ for the 2010 SHSGP application that covers the startup costs of Fusion and the recurring costs
- Hire remaining staff for the “lean model”
- Go-live
- Re-evaluate staffing levels and implement existing activities and recommendations within the Business Plan
- Consider funding and implementation of the “fully-deployed” model

# Questions?

- Thank you