



OFFICE of INTELLIGENCE and ANALYSIS

REFERENCE AID

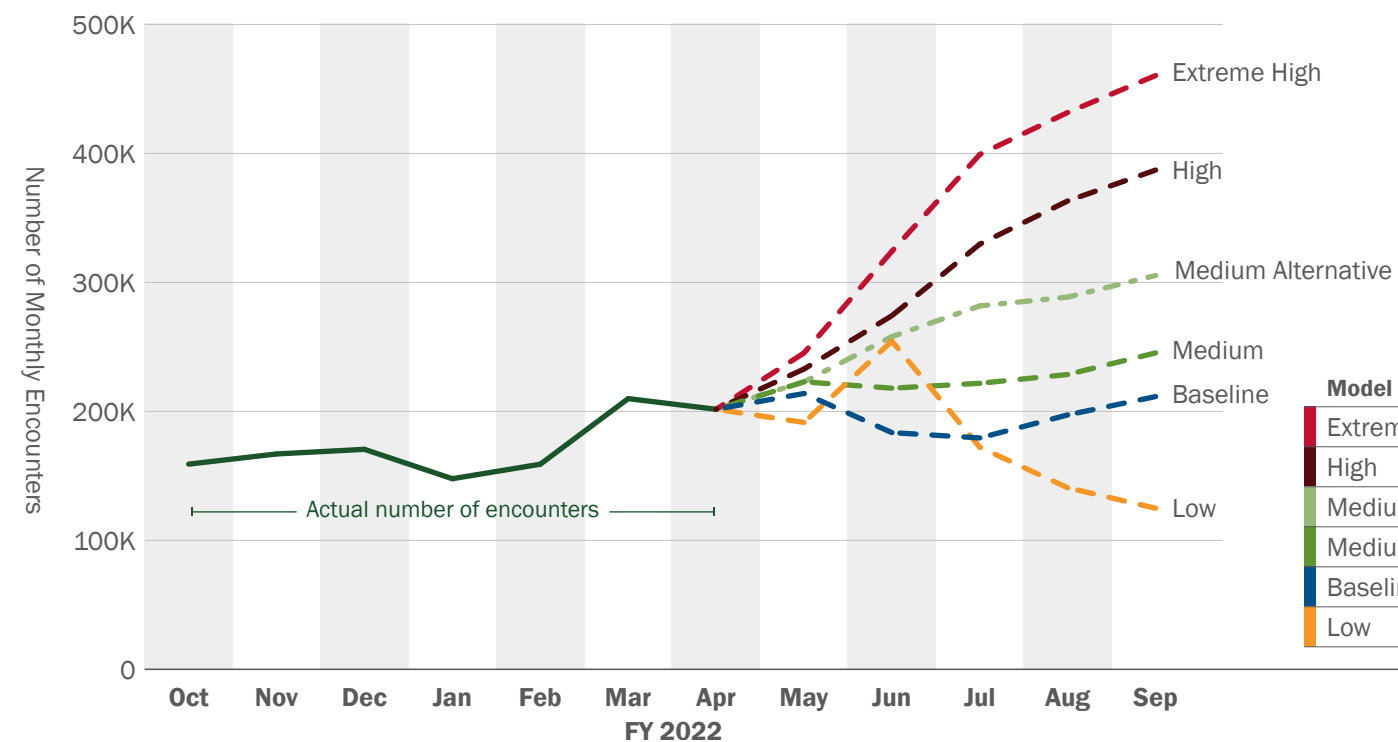
MAY 2022

(U//FOUO) Post-Title 42 Encounter Projections at the US Southwest Border

(U//FOUO) During the six-month period from April 2022 to September 2022, we project that US Customs and Border Protection (CBP) will record between 1 and 2.1 million encounters at the US Southwest Border. We have low confidence in these projections because migration is a complex and fluid issue, making predictive analysis difficult. Additionally, the percentage of selected Latin American and Caribbean nationals encountered at the US Southwest Border has increased from 11 percent in the first six months of FY 2021 to 31 percent in the first six months of FY 2022. This increasing diversification of migrant nationalities encountered at the US Southwest Border—on top of other capacity challenges—will further complicate US capacity to manage the expected flow, as it requires engagement with other migrant-source countries besides Mexico and Northern Triangle countries. Specifically, encounters of Cuban, Nicaraguan, and Venezuelan nationals pose unique challenges because of our limited relationships with these host countries.

OVERALL GRAPHIC CLASSIFICATION: UNCLASSIFIED//FOR OFFICIAL USE ONLY

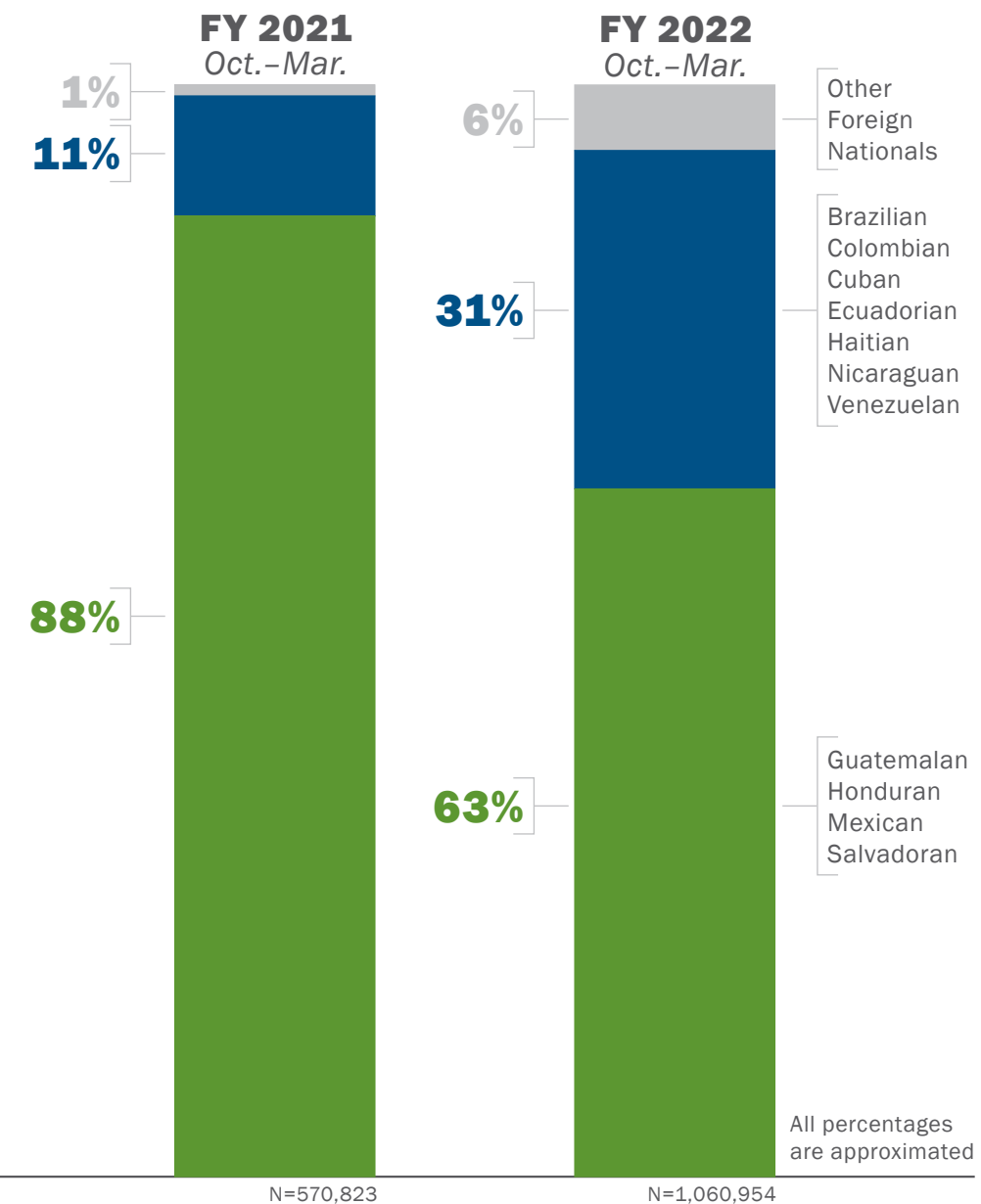
Projected Post-Title 42 US Southwest Border Encounters



These projections are based on 6 May 2022 DHS Office of Immigration Statistics (OIS) projections. OIS regularly updates these post-Title 42 projections, and all projections assume that Title 42 expires on 23 May 2022. Additionally, these are only US Border Patrol (USBP) encounter projections and do not include Office of Field Operations encounter projections. During the first six months of FY 2022, USBP encounters accounted for approximately 96 percent of all encounters at the US Southwest Border.

Model	Six-Month Projection Apr-Sep FY 2022	Total FY 2022 Projection
Extreme High	2,062,497	3,076,010
High	1,788,701	2,802,214
Medium Alternative	1,558,352	2,571,865
Medium	1,338,351	2,351,864
Baseline	1,187,331	2,200,844
Low	1,085,565	2,099,078

Diversification of Nationalities Encountered at the US Southwest Border



Model	Projection Assumptions
Baseline	Projection based on FY 2016 trends.
Low	Projection based on combination of FY 2016 trends and CBP intelligence.
Medium	Projection based on FY 2014-FY 2019 trends and assumption that nationalities with higher Title 42 expulsions in the past three months (i.e., Mexican and Northern Triangle nationalities) will increase post Title 42.
Medium Alternative	Projection based on Medium assumption with additional increases among Northern Triangle nationalities.
High	Projection based on FY 2019/FY 2021 trends and assumption that non-Mexican and non-Northern Triangle nationalities will increase post Title 42.
Extreme High	Projection based on FY 2019/FY 2021 trends and assumption that all nationalities will increasingly come to the US Southwest Border post Title 42. Designed to represent a worst-case scenario, low probability/high consequence event.

Source, Reference, and Dissemination Information

Prepared By	(U) Transnational Organized Crime Mission Center
Coordination	(U) DHS Office of Immigration Statistics and US Customs and Border Protection.
For Questions, Contact	(U) DHS-SPS-RFI@hq.dhs.gov
Reporting Suspicious Activity	<p>(U) To report suspicious activity, law enforcement, Fire-EMS, private security personnel, and emergency managers should follow established protocols; all other personnel should call 911 or contact local law enforcement. Suspicious activity reports (SARs) will be forwarded to the appropriate fusion center and FBI Joint Terrorism Task Force for further action. For more information on the Nationwide SAR Initiative, visit www.dhs.gov/nsi.</p> <p>(U) To report a computer security incident, either contact US-CERT at 888-282-0870, or go to https://forms.us-cert.gov/report/ and complete the US-CERT Incident Reporting System form. The US-CERT Incident Reporting System provides a secure, web-enabled means of reporting computer security incidents to US-CERT. An incident is defined as a violation or imminent threat of violation of computer security policies, acceptable use policies, or standard computer security practices. In general, types of activity commonly recognized as violating typical security policies include attempts (either failed or successful) to gain unauthorized access to a system or its data, including personally identifiable information; unwanted disruption or denial of service; the unauthorized use of a system for processing or storing data; and changes to system hardware, firmware, or software without the owner's knowledge, instruction, or consent.</p>
Dissemination	(U) Federal, state, local, tribal, and territorial authorities, and private sector partners.
Warning Notices & Handling Caveats	(U) Warning: This document is UNCLASSIFIED//FOR OFFICIAL USE ONLY (U//FOUO). It contains information that may be exempt from public release under the Freedom of Information Act (5 U.S.C. 552). It is to be controlled, stored, handled, transmitted, distributed, and disposed of in accordance with DHS policy relating to FOUO information and is not to be released to the public, the media, or other personnel who do not have a valid need to know without prior approval of an authorized DHS official. State and local homeland security officials may share this document with authorized critical infrastructure and key resource personnel and private sector security officials without further approval from DHS.
