



# **Director's Update Brief novel 2009-H1N1**

**FRIDAY  
14 AUG 2009 0815 EDT**

**Day 119  
Week of Workforce Augmentation**

Key Events  
novel 2009-H1N1  
14 AUG 2009

---

- **Key events:**
  - novel 2009-H1N1 Declarations
    - WHO: Pandemic Phase 6 (11 JUN 2009 1600 EDT)
      - Outbreaks in at least one country in > two WHO regions
    - USG: Public Health Emergency declared (26 Apr 2009)
      - Renewed by HHS Secretary Kathleen Sebelius
    - HHS: Downgraded to Phase 1 – Awareness (9 May 2009)
- **US Cases** (as of 13 Aug 2009; next update 21 August 2009)
- **No longer reporting total cases.**

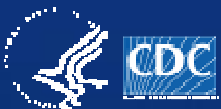
US TOTALS	HOSP	DEATHS
CASES	7,511	477
SLTTs AFFECTED	51	39

## Vaccine ***Distribution***

novel 2009-H1N1 – 14 AUG 2009

---

- Centralized distribution by contractor receiving vaccine from 5 manufacturers and ancillary supplies from up to 4 manufacturers and shipping to sites (up to 80,000), under direction of state health departments
- System similar to VFC
- Vaccine record cards provided by CDC and included in the ancillary supply kit
- VIS posted on the CDC website



Vaccine  
***Upcoming Events***  
novel 2009-H1N1 – 14 AUG 2009

---

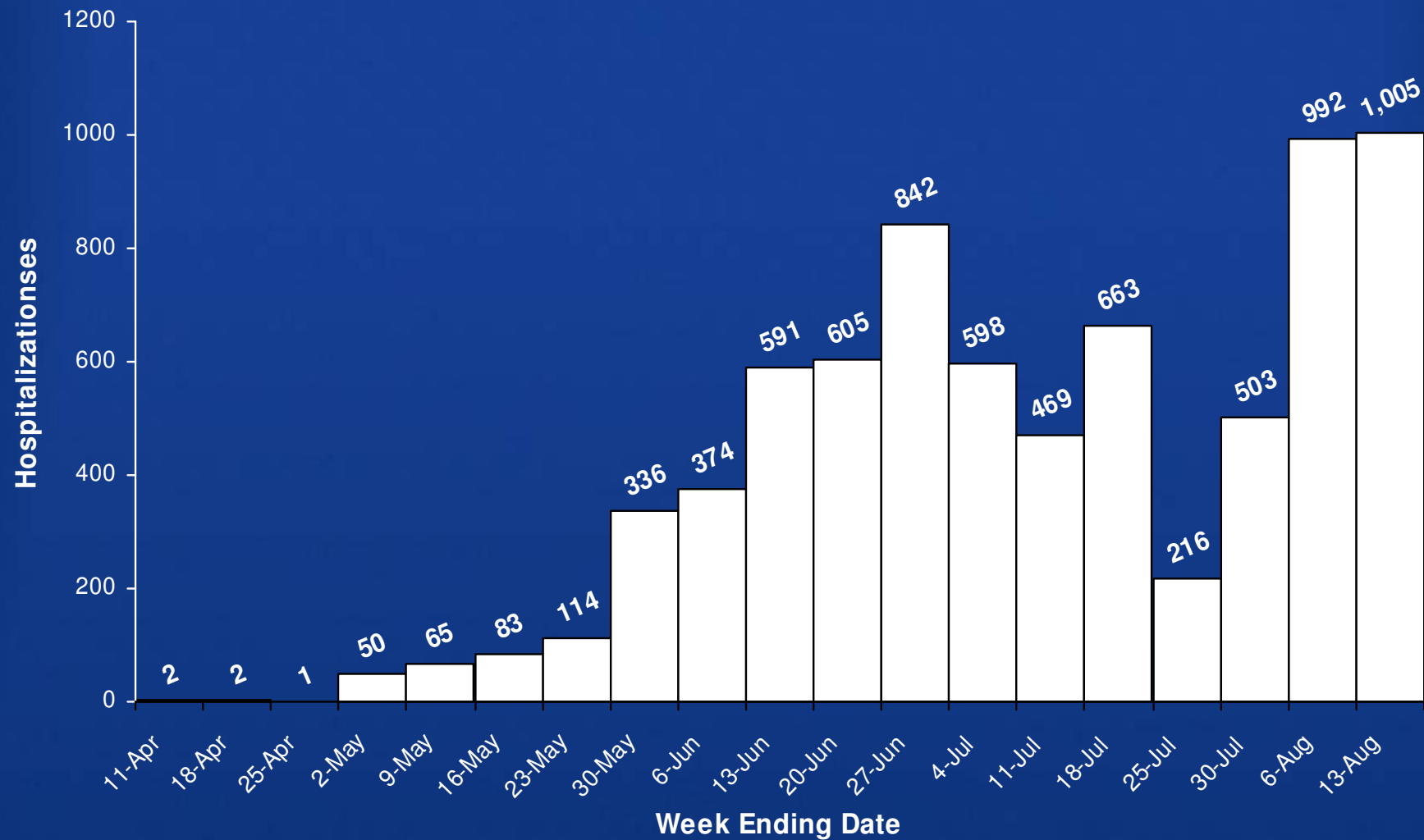
- ~August 18
  - Posting of ACIP recommendations
  - Family of related communication products and information, such as
    - Additional description of program
    - School-located vaccination guidance
    - Provider information on enrollment
- Adverse Events drill: CDC, FDA, HHS—mid-Sept

International  
***Southern Hemisphere Summary***  
novel 2009-H1N1 – 14 AUG 2009

---

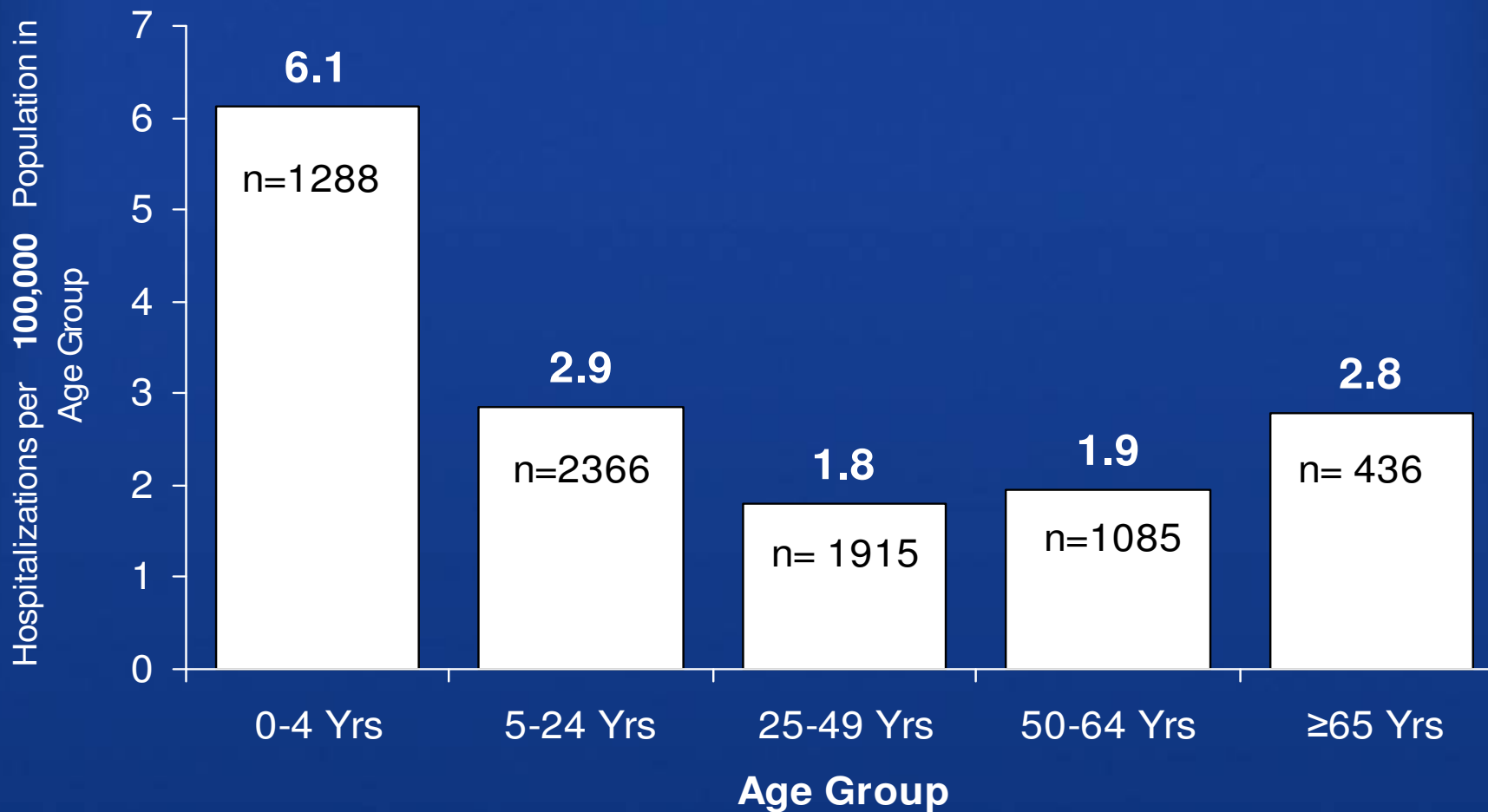
- Novel influenza A (H1N1) is now the predominate influenza subtype in circulation
  - 66% of influenza viruses in the Northern Hemisphere
  - 89% of influenza viruses in the Southern Hemisphere
- Epidemiology and clinical characteristics in Southern Hemisphere are similar to United States experience in spring
- No changes in the virus

Epidemiology/Surveillance  
***Hospitalizations by Report Date***  
2009-H1N1 – (as of) 13 AUG 2009 (n=7,511) (Weekly\*)



***Hospitalization Rate per 100,000 Population by Age Group (n=7,090\*)***

2009-H1N1 – 14 AUG 2009



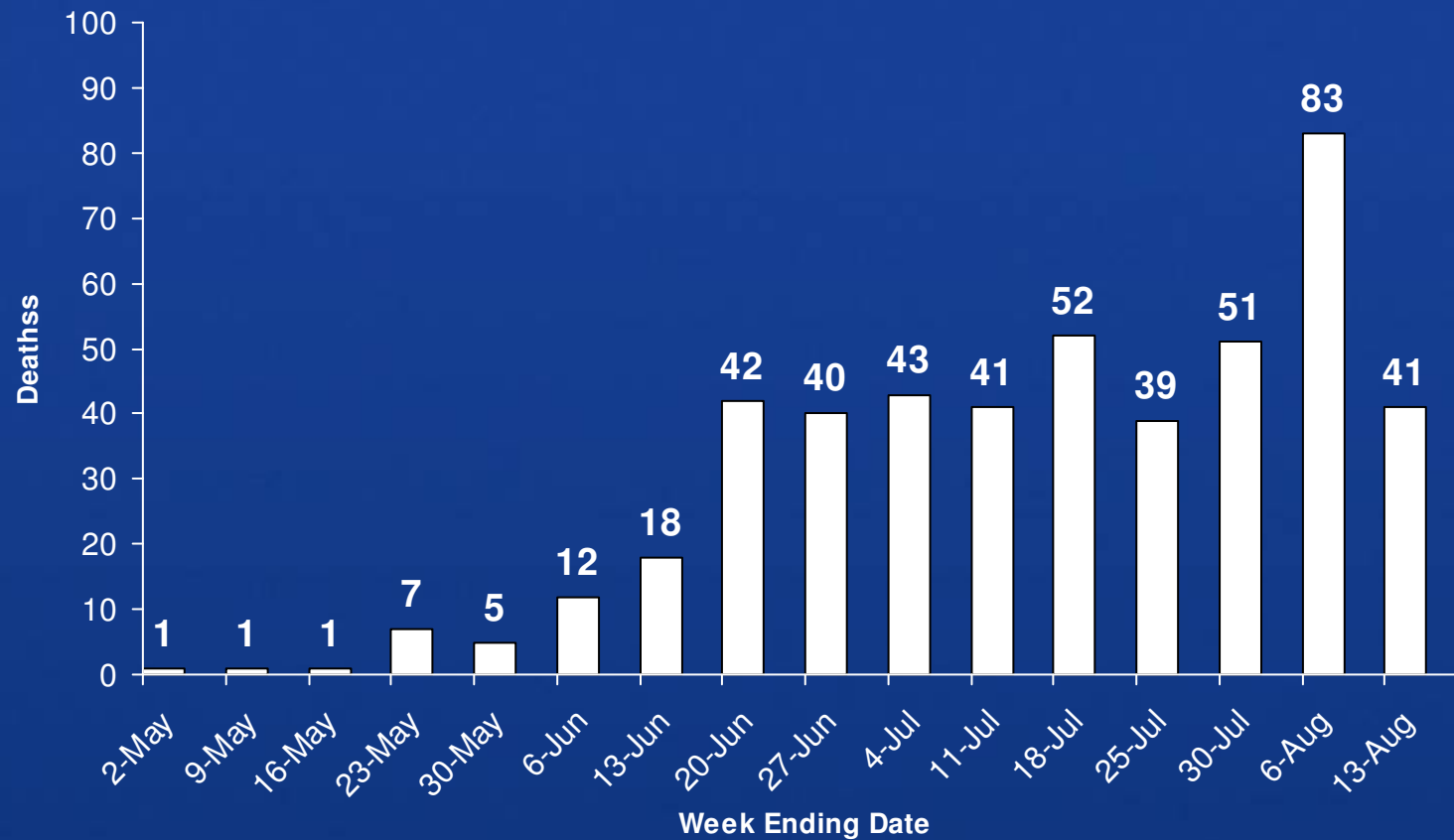
\*Hospitalizations with unknown ages are not included (n=421)

\*Rate / 100,000 by Single Year Age Groups: Denominator source: 2008 Census Estimates, U.S. Census Bureau at:

<http://www.census.gov/popest/national/asrh/files/NC-EST2007-ALLDATA-R-File24.csv>

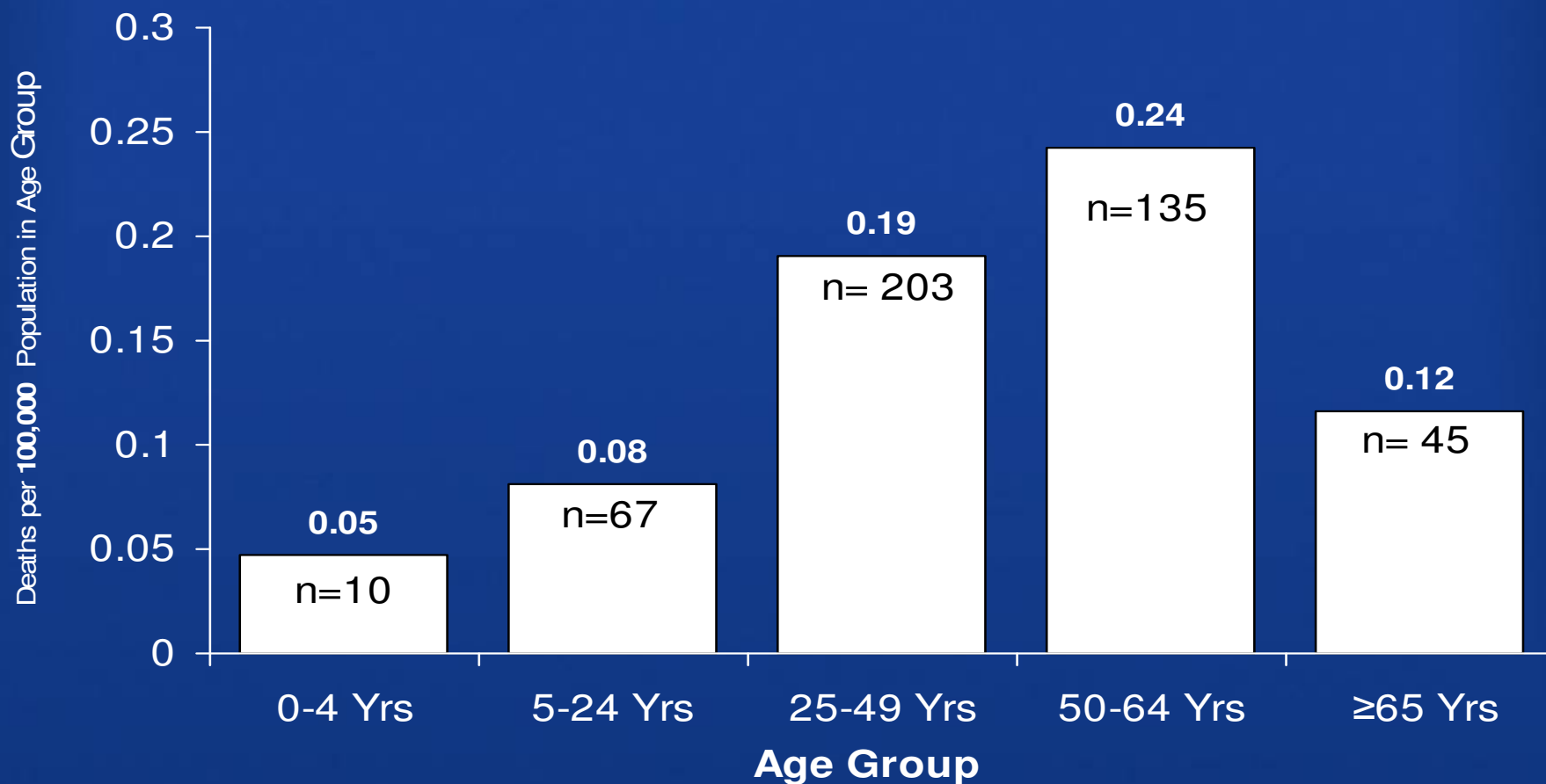


Epidemiology/Surveillance  
***Deaths by Report Date***  
2009-H1N1 – (as of) 13 AUG 2009 (n=477) (Weekly\*)





Epidemiology/Surveillance  
***Death Rate per 100,000 Population by Age Group (n=460\*)***  
2009-H1N1 – 14 AUG 2009



\*Deaths with unknown ages are not included (n=17)

\*Rate / 100,000 by Single Year Age Groups: Denominator source: 2008 Census Estimates, U.S. Census Bureau at:

<http://www.census.gov/popest/national/asrh/files/NC-EST2007-ALLDATA-R-File24.csv>

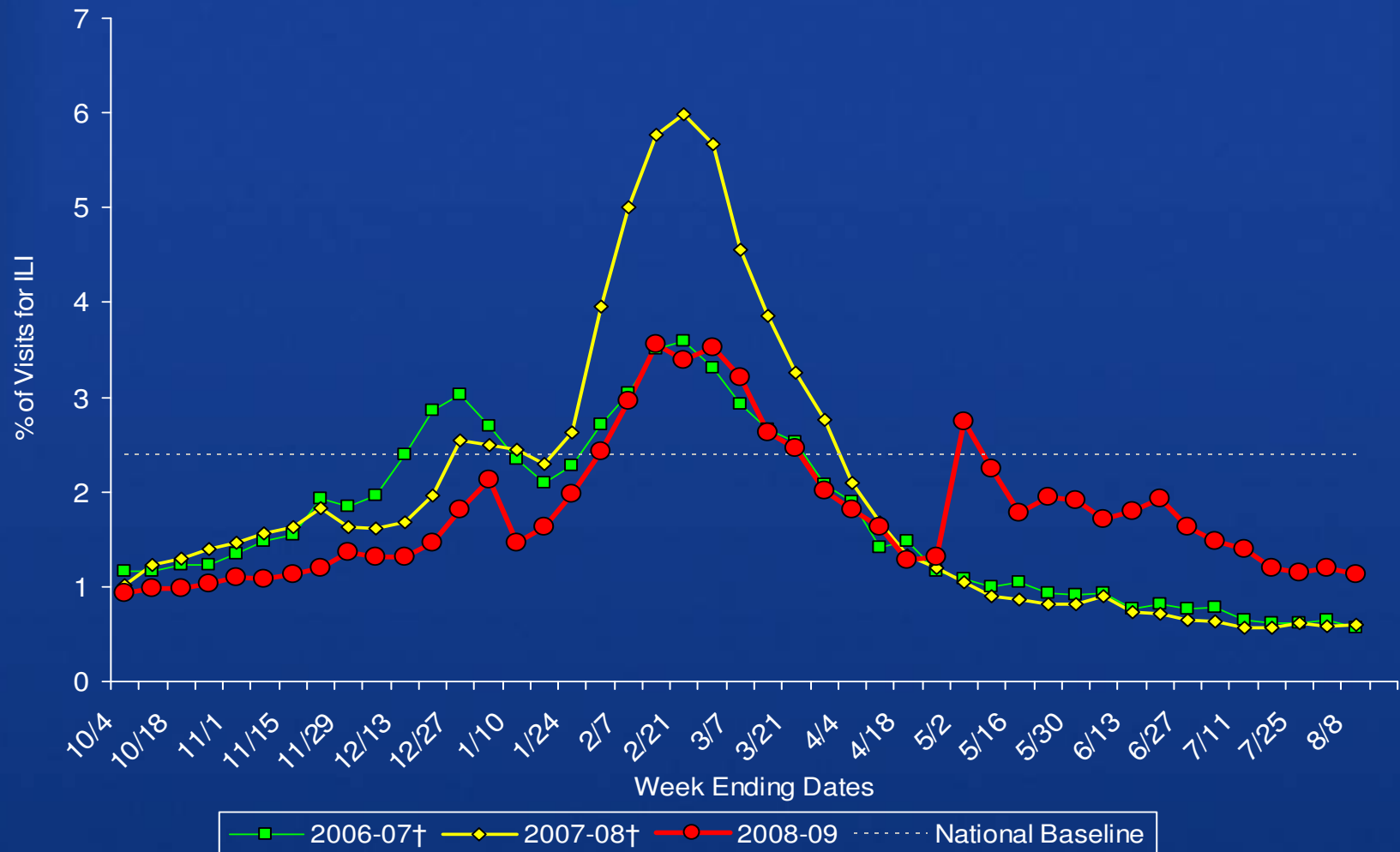


Epidemiology/Surveillance

***Percentage of Visits for Influenza-like Illness (ILI) Reported by  
the US Outpatient Influenza-like Illness Surveillance Network (ILINet),***

National Summary 2008-09 and Previous Two Seasons

novel 2009-H1N1 – 14 AUG 2009

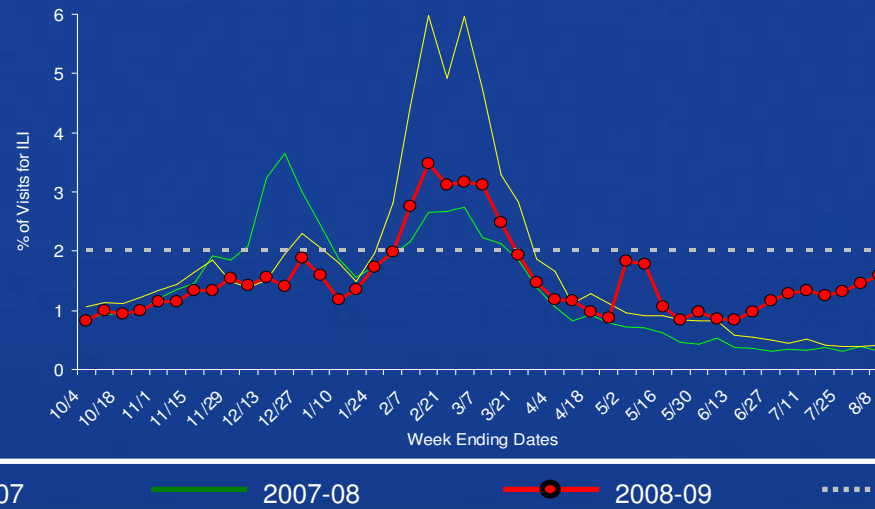


# Epidemiology/Surveillance

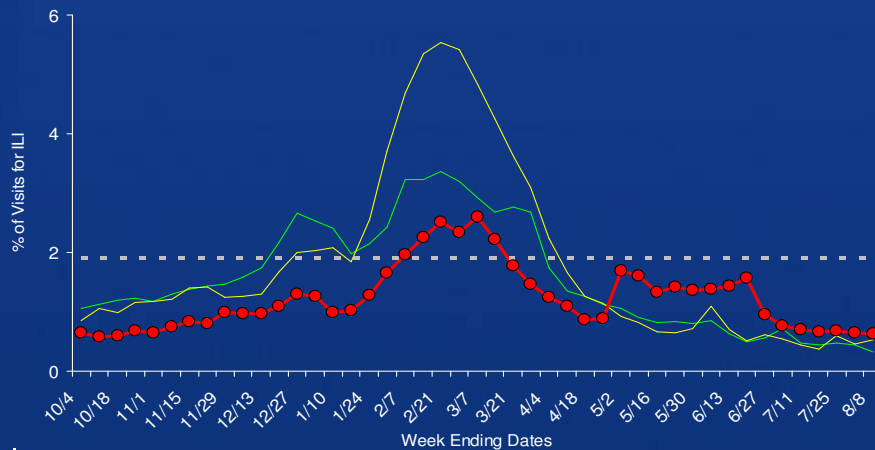
## Current Influenza Surveillance – ILINet Regions IV-VI

### novel 2009-H1N1 – 14 AUG 2009

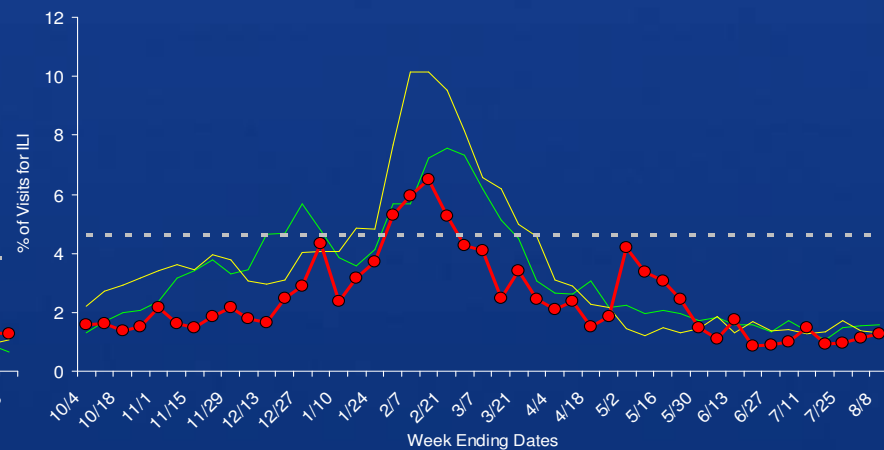
Region IV - AL, FL, GA, KY, MS, NC, SC, TN



Region V - IL, IN, MI, MN, OH, WI



Region VI - AR, LA, NM, OK, TX

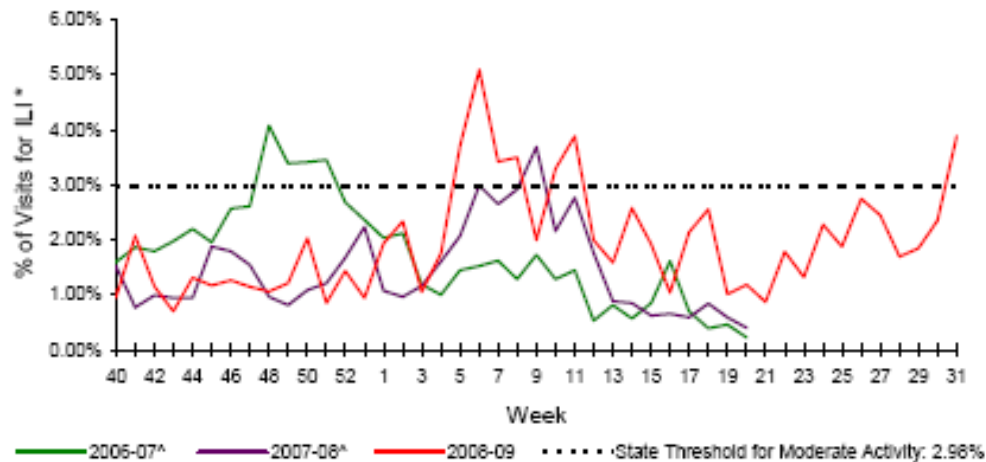


# Epidemiology and Surveillance

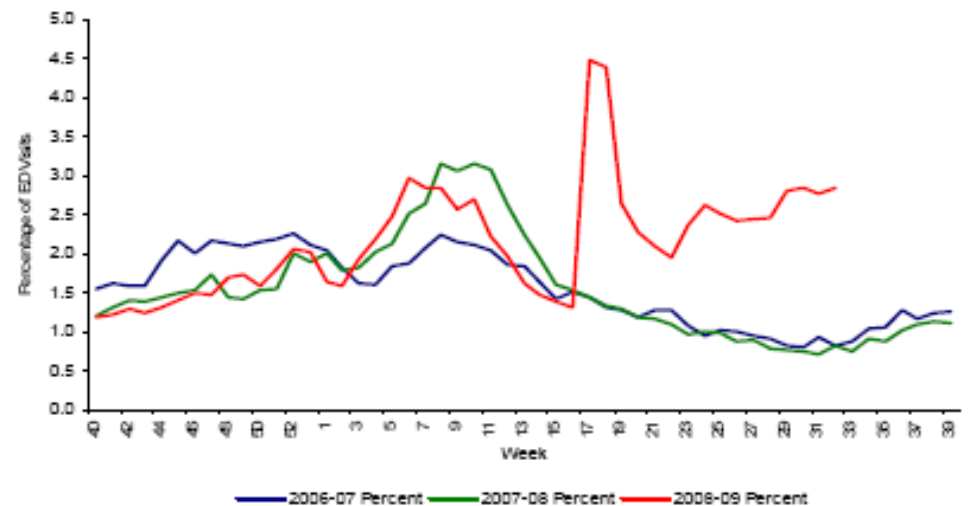
## *Influenza Like Illness Activity – Florida Week 31*

### 2009-H1N1 – 14 AUG 2009

Percentage of Visits for Influenza-like Illness Weighted by State Population as Reported by Sentinel Providers Statewide Summary  
2008-09, 2007-08, and 2006-07



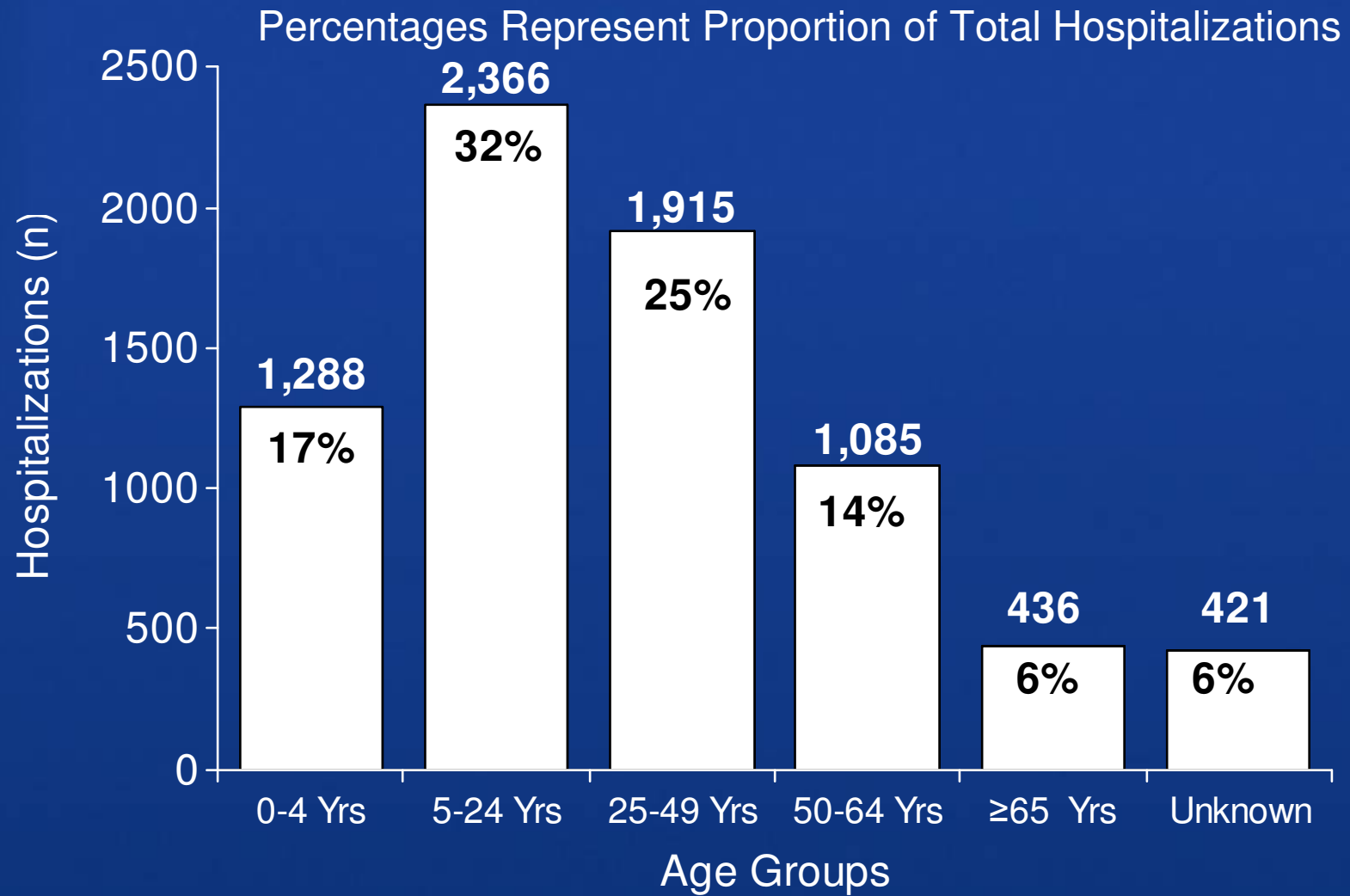
Percentage of Influenza-Like Illness from Emergency Department Chief Complaints, Florida ESSENCE Participating Hospitals (N=114), 2006-2009



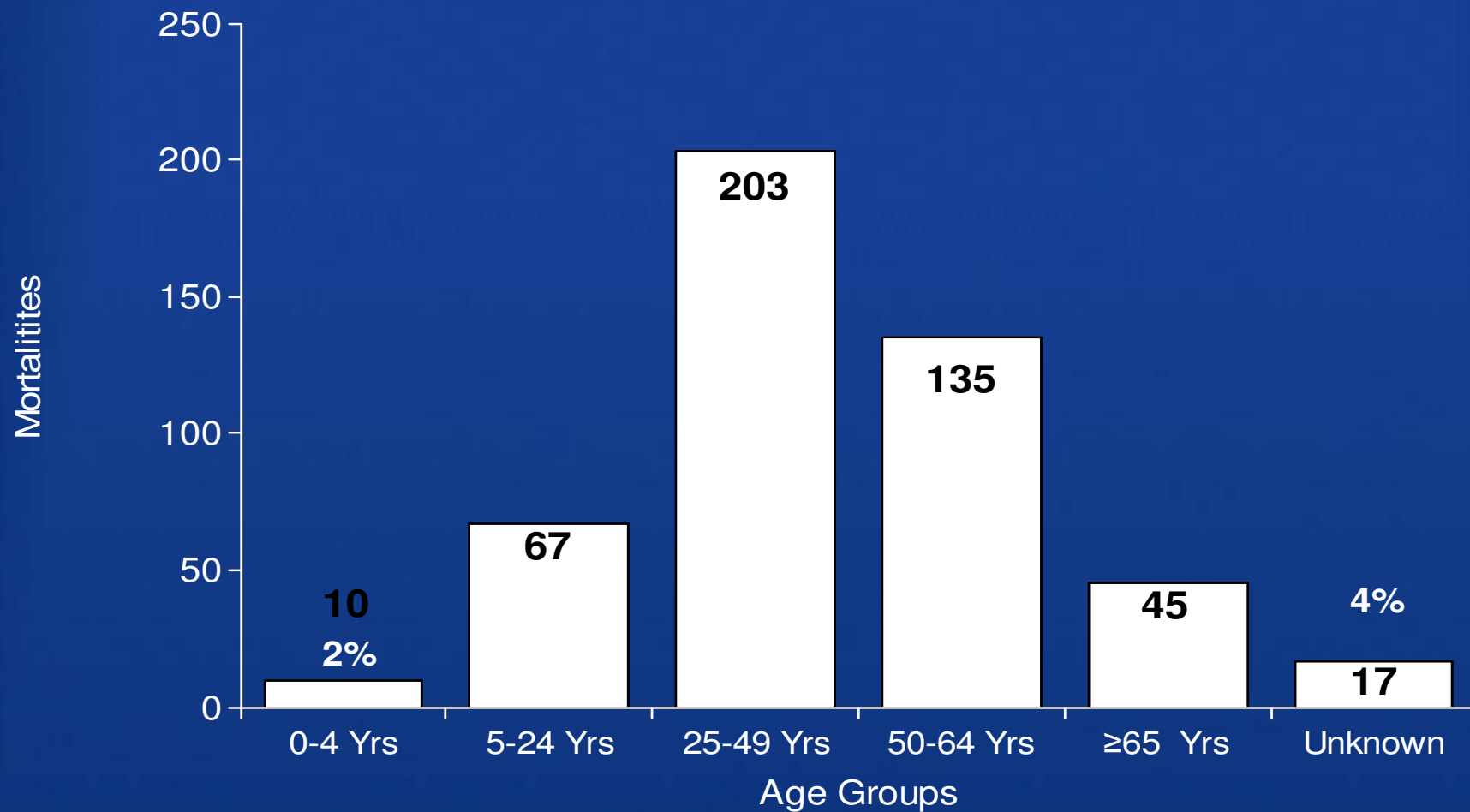


## Supporting Documentation

Epidemiology/Surveillance  
Hospitalizations by Age Group  
2009-H1N1 – 13 AUG 2009 (n=7,511)



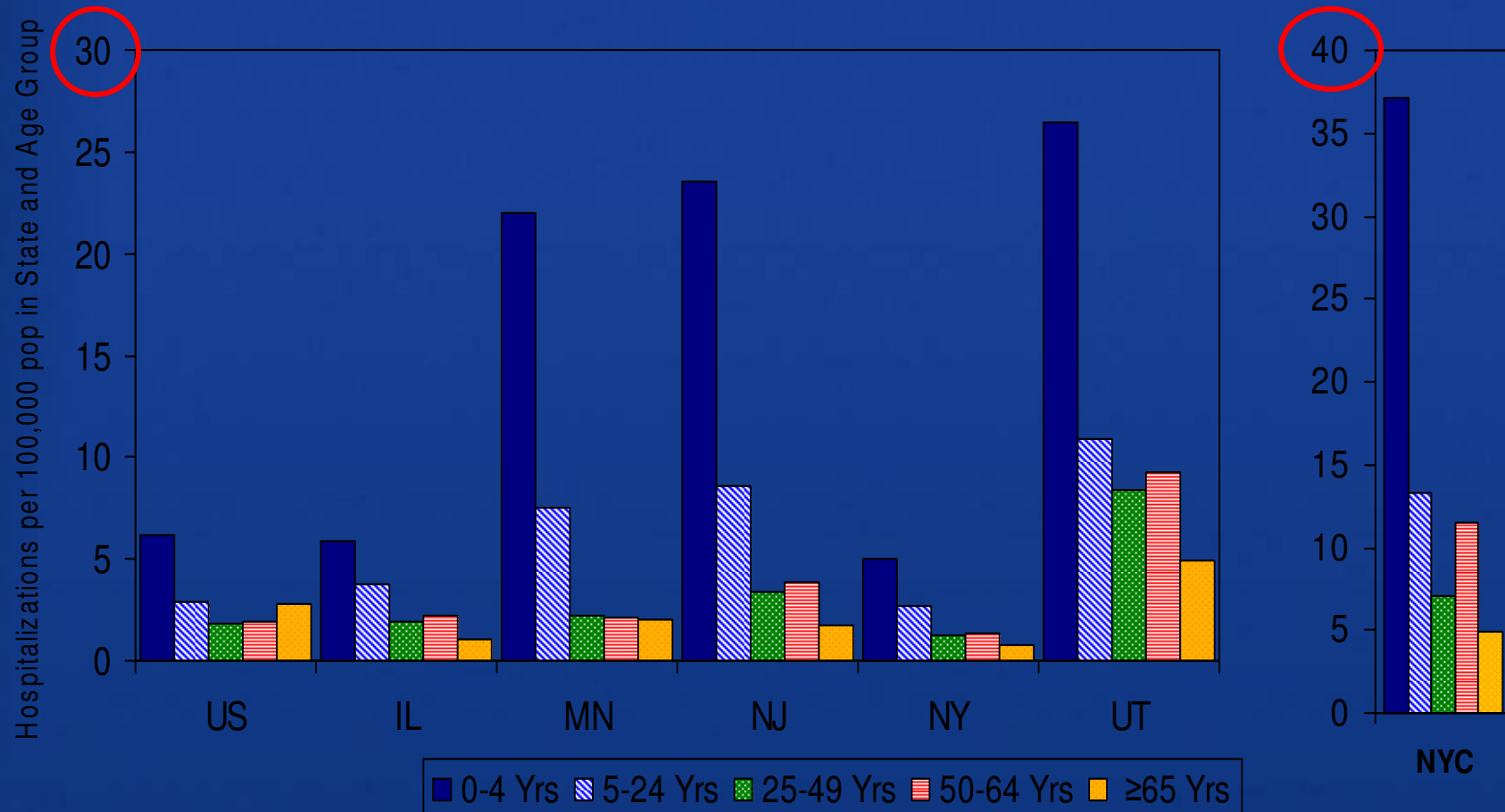
Epidemiology/Surveillance  
Deaths by Age Group  
2009-H1N1 – 14 AUG 2009 (n=477)



# Epidemiology/Surveillance

## Hospitalization Rate per 100,000 Population by Age Group and Selected Sites

### 2009-H1N1 – 13 AUG 2009



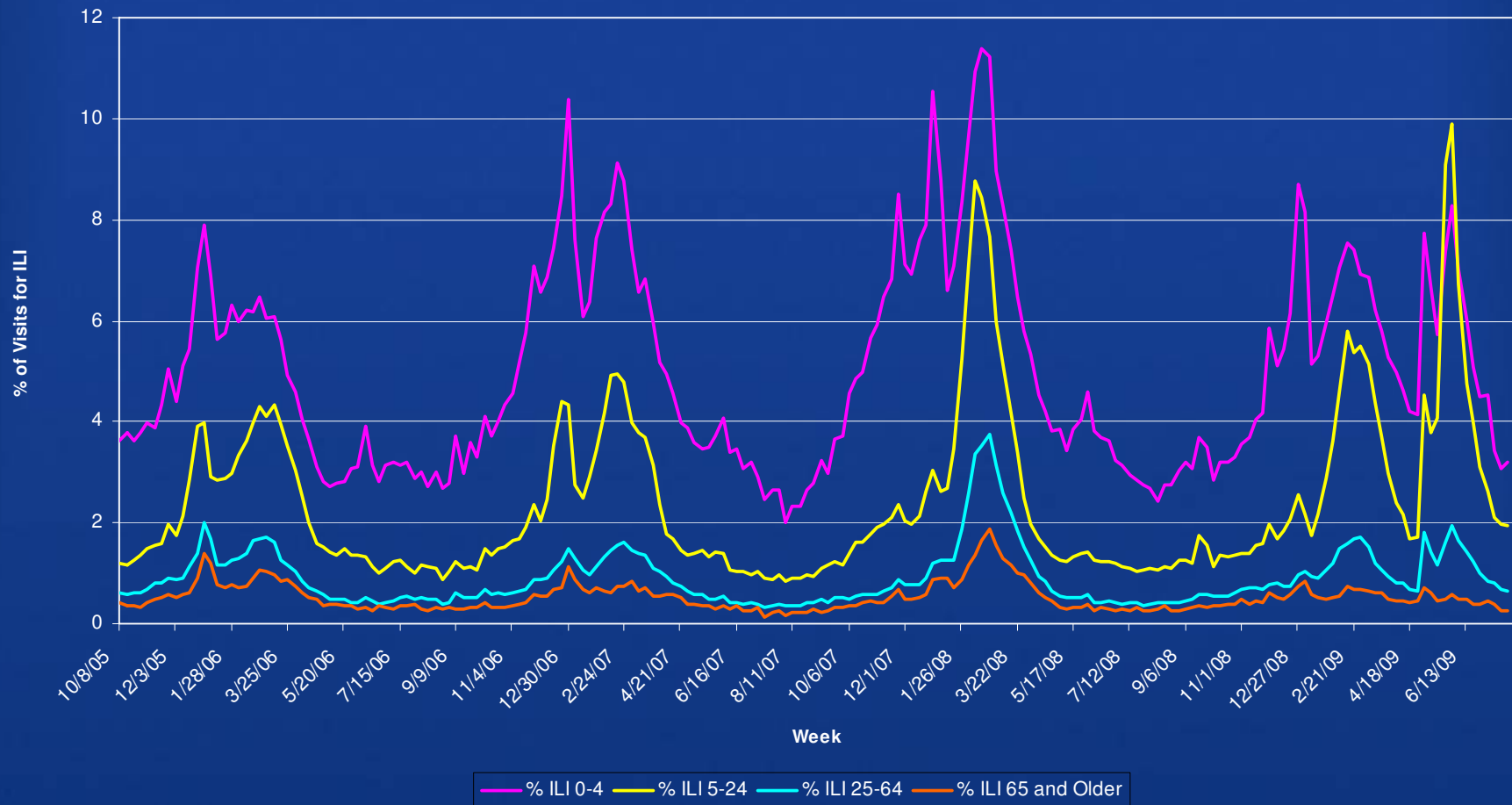
\*Denominator: U.S. Census population estimates for July 2008 for all states, 2007 American Community Survey for NYC  
Hospitalizations with unknown ages are not included



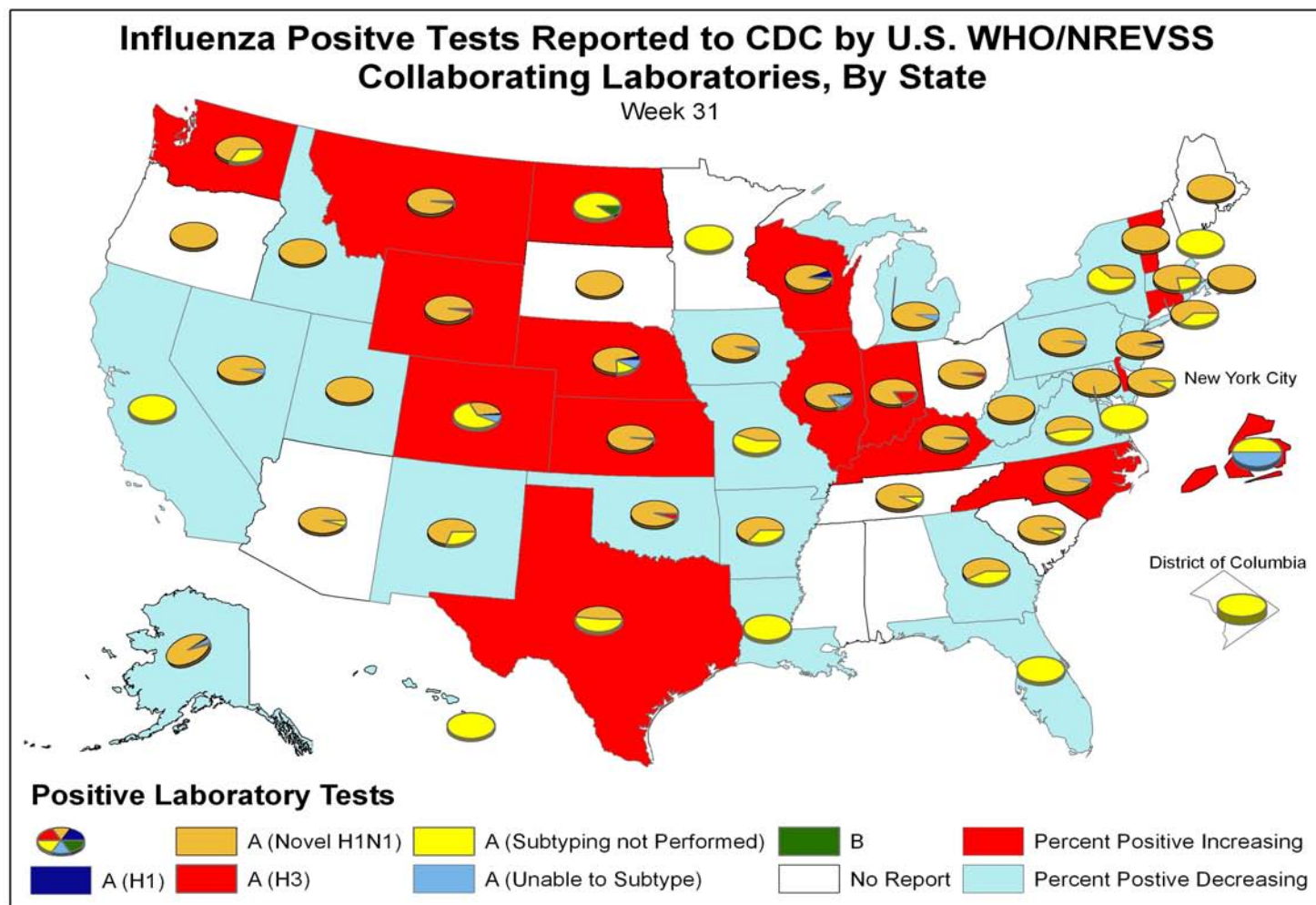


## Epidemiology/Surveillance

Percentage of Visits for Influenza-like Illness (ILI) Reported by the US Outpatient Influenza-like Illness Surveillance Network (ILINet), National Summary 2008-09 and Previous Three Seasons, By Age  
novel 2009-H1N1 – 14 AUG 2009



novel 2009-H1N1 – 14 AUG 2009



Epidemiology/Surveillance  
Surveillance Systems Summary  
novel 2009-H1N1 – 14 AUG 2009

---

- ***WHO/NREVSS Collaborating Laboratories***
  - Seasonal A (H1), A (H3), and B viruses co-circulated with Novel H1N1 viruses
  - % of specimens testing positive for influenza decreased
- ***ILINet (week ending 08 August)***
  - % of ILI outpatient visits is below the national baseline
  - Overall, the % of outpatient visits for ILI decreased slightly
- ***122 Cities Mortality Reporting System (graph)***
  - % pneumonia and influenza deaths was below the epidemic threshold
  - % deaths due to pneumonia and influenza decreased slightly
- ***Geographic Spread of Influenza as Assessed by State and Territorial Epidemiologists – state reporting:***

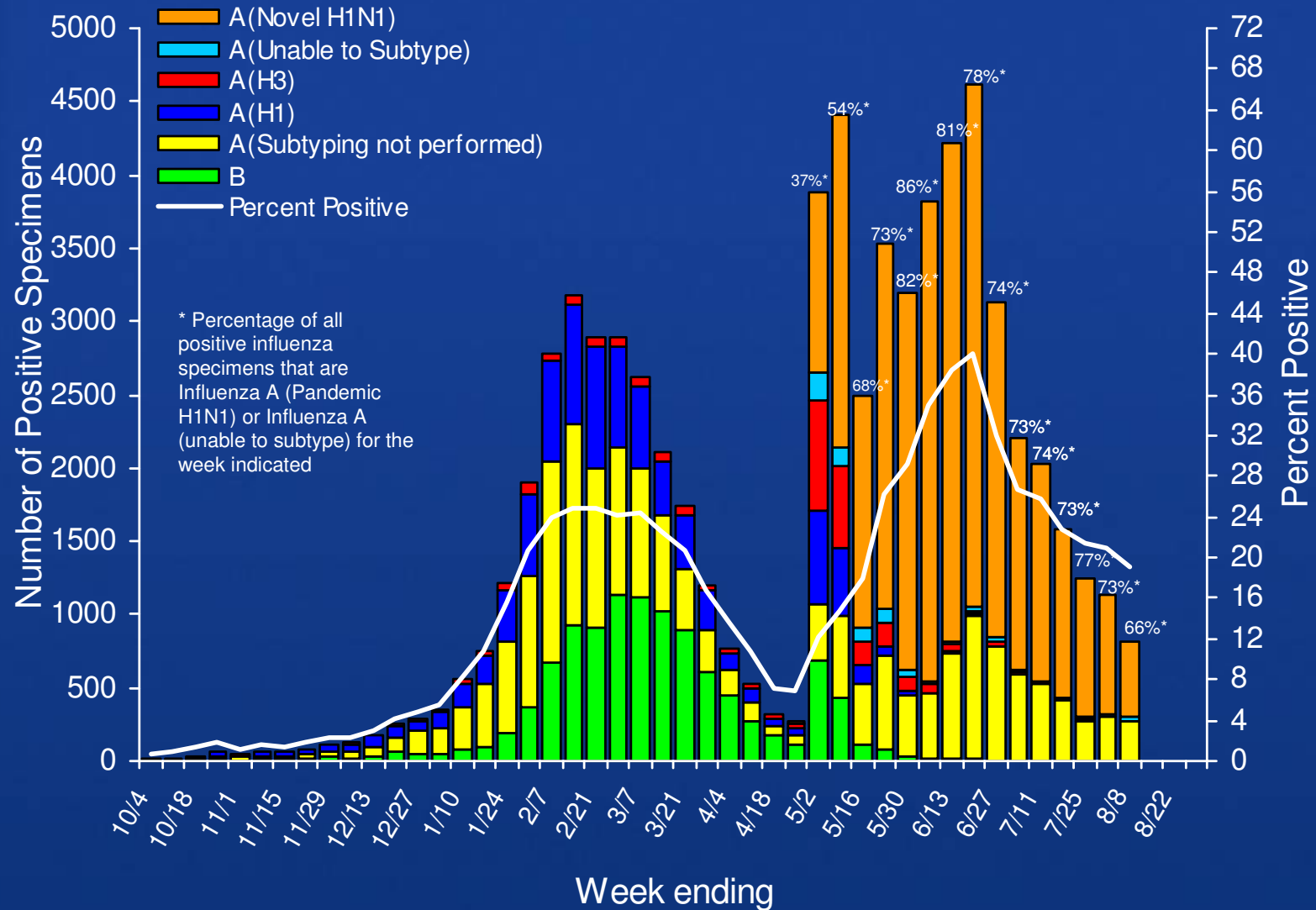
– Widespread: PR + 4 states	Regional: 10 states
– Local: DC + 10 states	Sporadic: 26 states



# Epidemiology/Surveillance

## U.S. WHO/NREVSS Collaborating Laboratories, National Summary, 2008-09

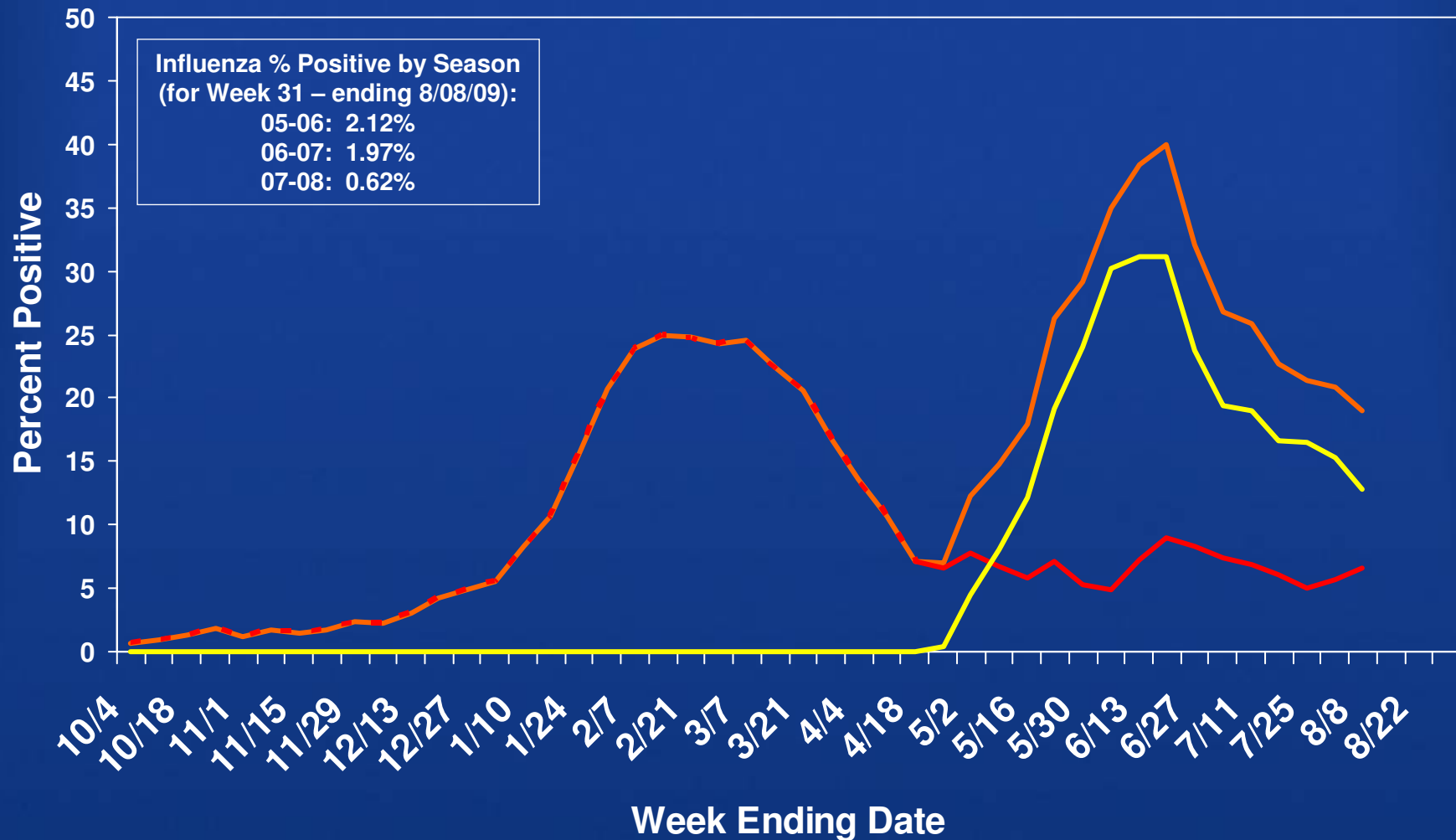
### novel 2009-H1N1 – 14 AUG 2009



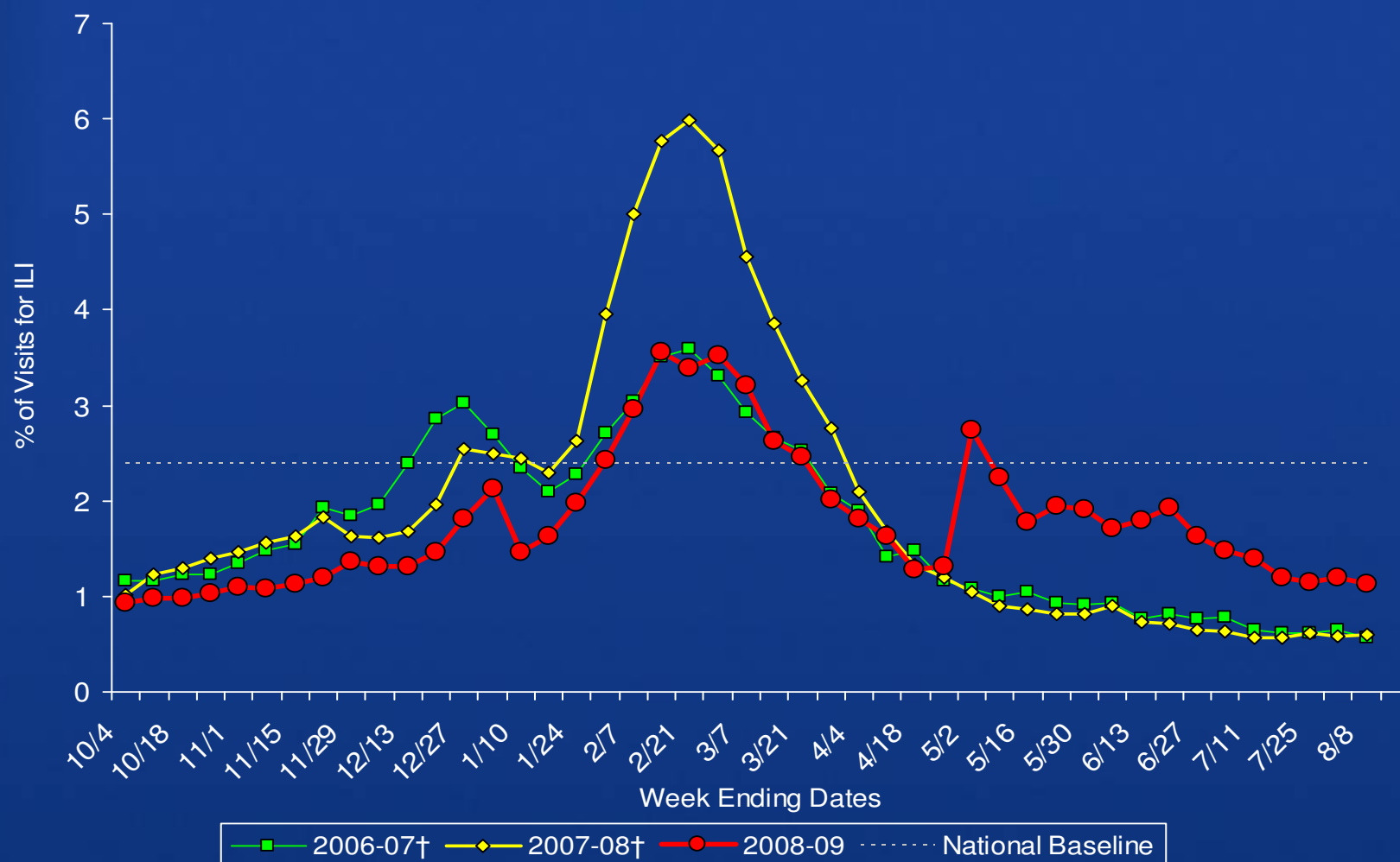
## Epidemiology/Surveillance

Percent of Specimens Positive for Influenza Reported by WHO and NREVSS Labs:  
Influenza A (Novel H1N1) vs. Seasonal Influenza, by Week

novel 2009-H1N1 – 14 AUG 2009



Epidemiology/Surveillance  
 Percentage of Visits for Influenza-like Illness (ILI) Reported by  
 the *US Outpatient Influenza-like Illness Surveillance Network (ILINet)*,  
 National Summary 2008-09 and Previous Two Seasons  
 novel 2009-H1N1 – 14 AUG 2009

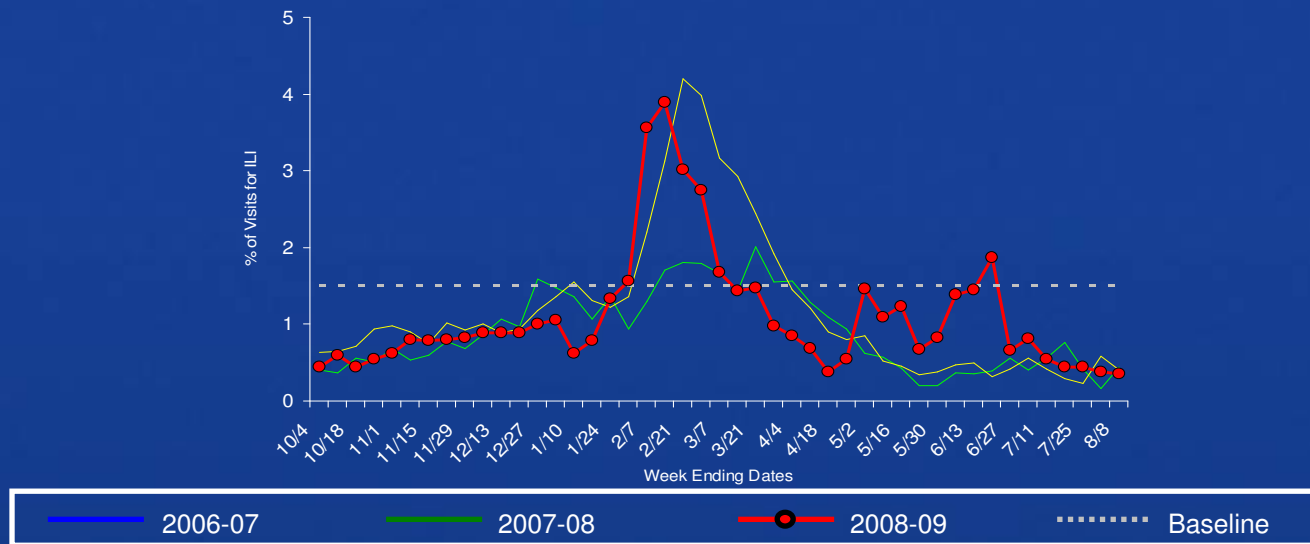


# Epidemiology/Surveillance

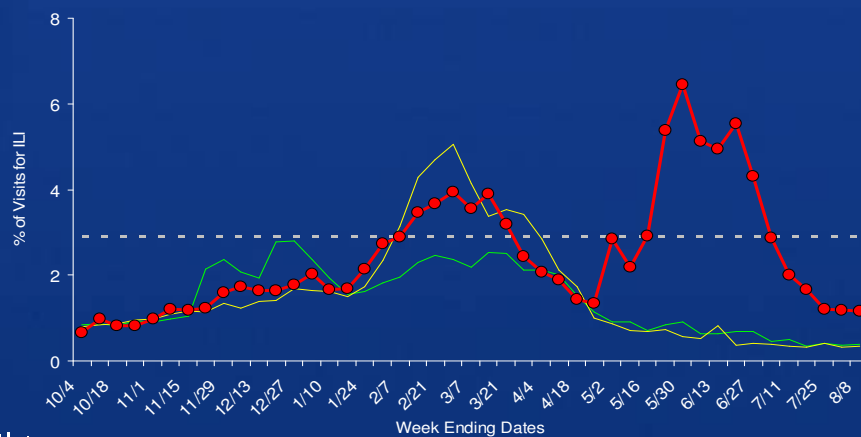
## Current Influenza Surveillance – *ILINet Regions I-III*

### novel 2009-H1N1 – 11 AUG 2009

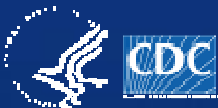
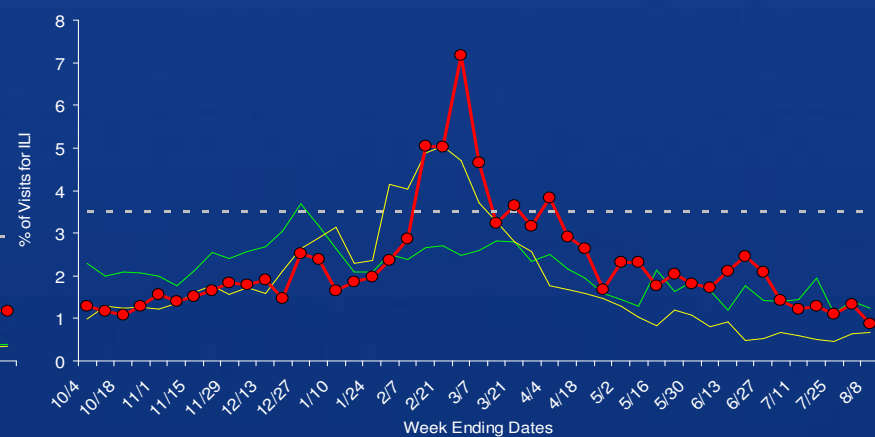
Region I - CT, ME, MA, NH, RI, VT



Region II - NJ, NY



Region III - DE, DC, MD, PA, VA, WV

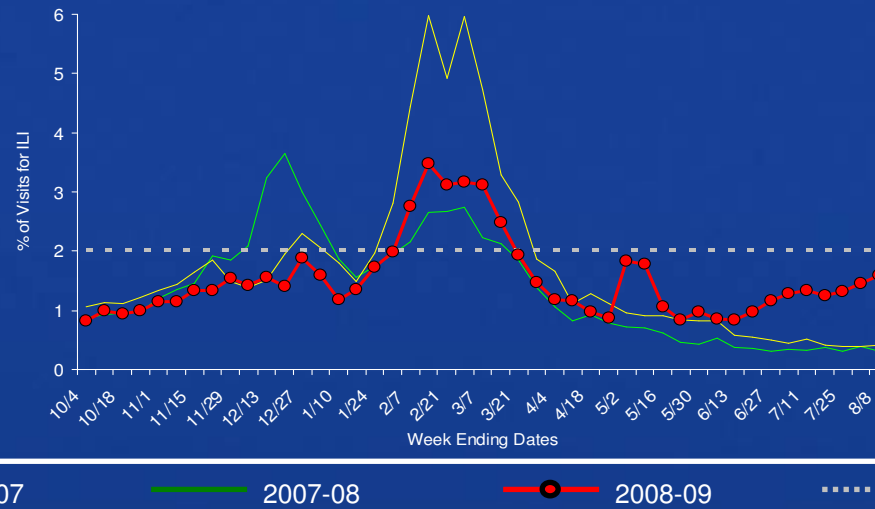


# Epidemiology/Surveillance

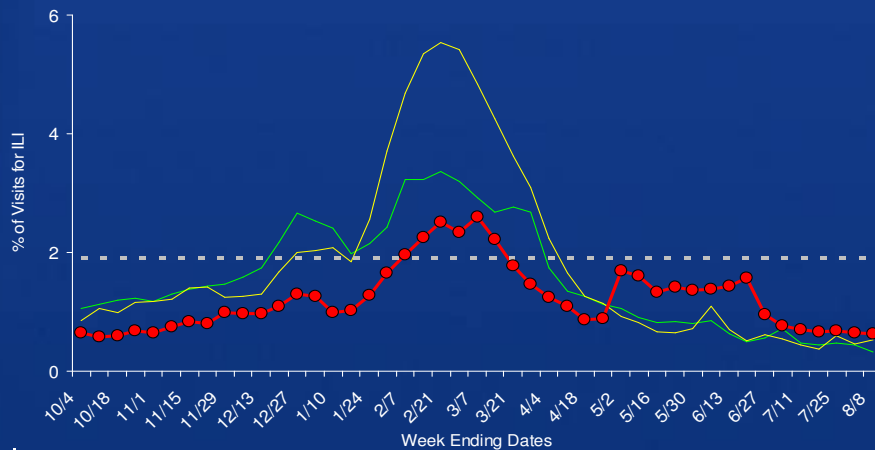
## Current Influenza Surveillance – *ILINet Regions IV-VI*

### novel 2009-H1N1 – 14 AUG 2009

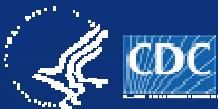
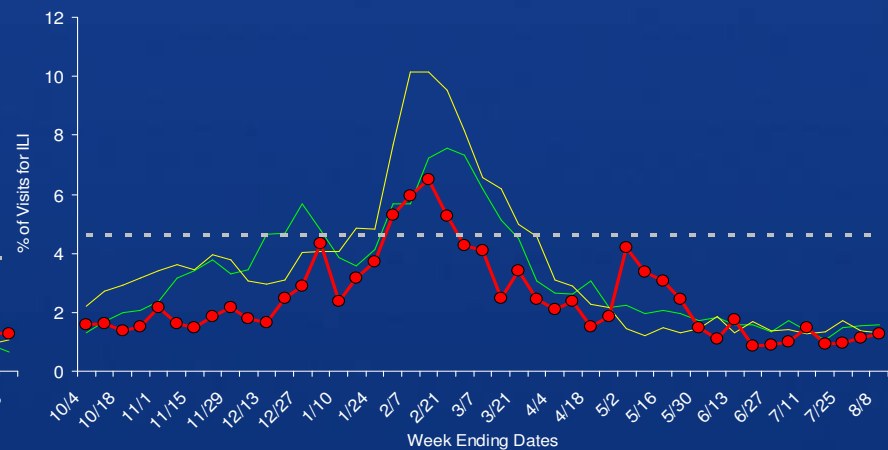
Region IV - AL, FL, GA, KY, MS, NC, SC, TN



Region V - IL, IN, MI, MN, OH, WI



Region VI - AR, LA, NM, OK, TX



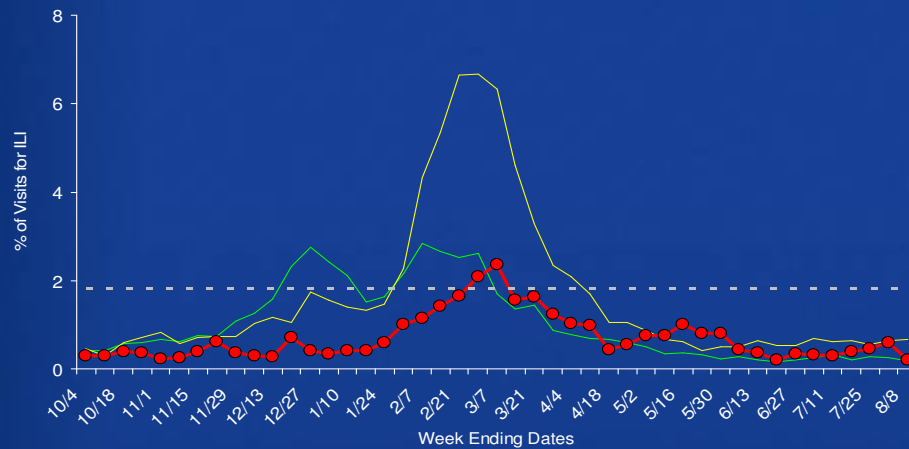


# Epidemiology/Surveillance

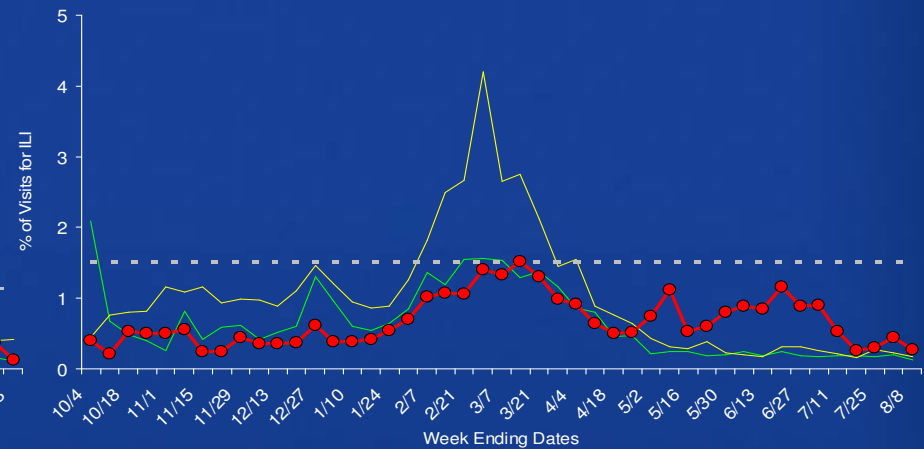
## Current Influenza Surveillance – *ILINet* Regions VII-X

### novel 2009-H1N1 – 14 AUG 2009

Region VII - IA, KS, MO, NE

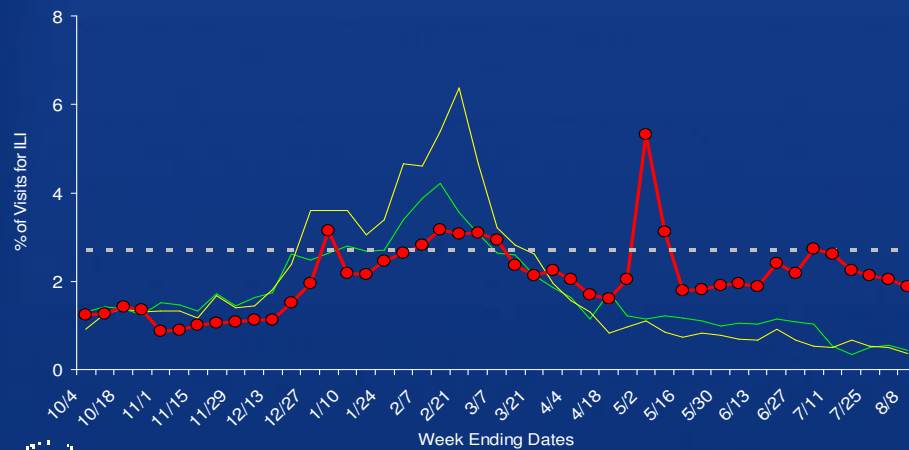


Region VIII - CO, MT, ND, SD, UT, WY

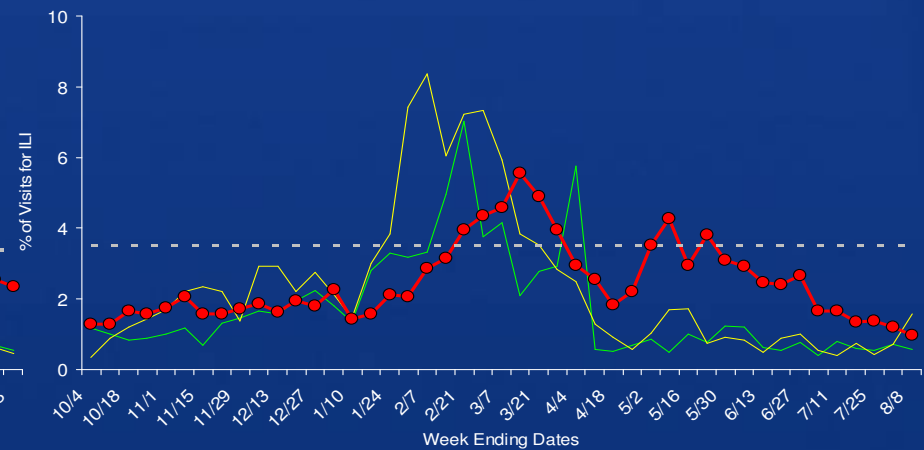


— 2006-07    — 2007-08    —●— 2008-09    ..... Baseline

Region IX - AZ, CA, HI, NV



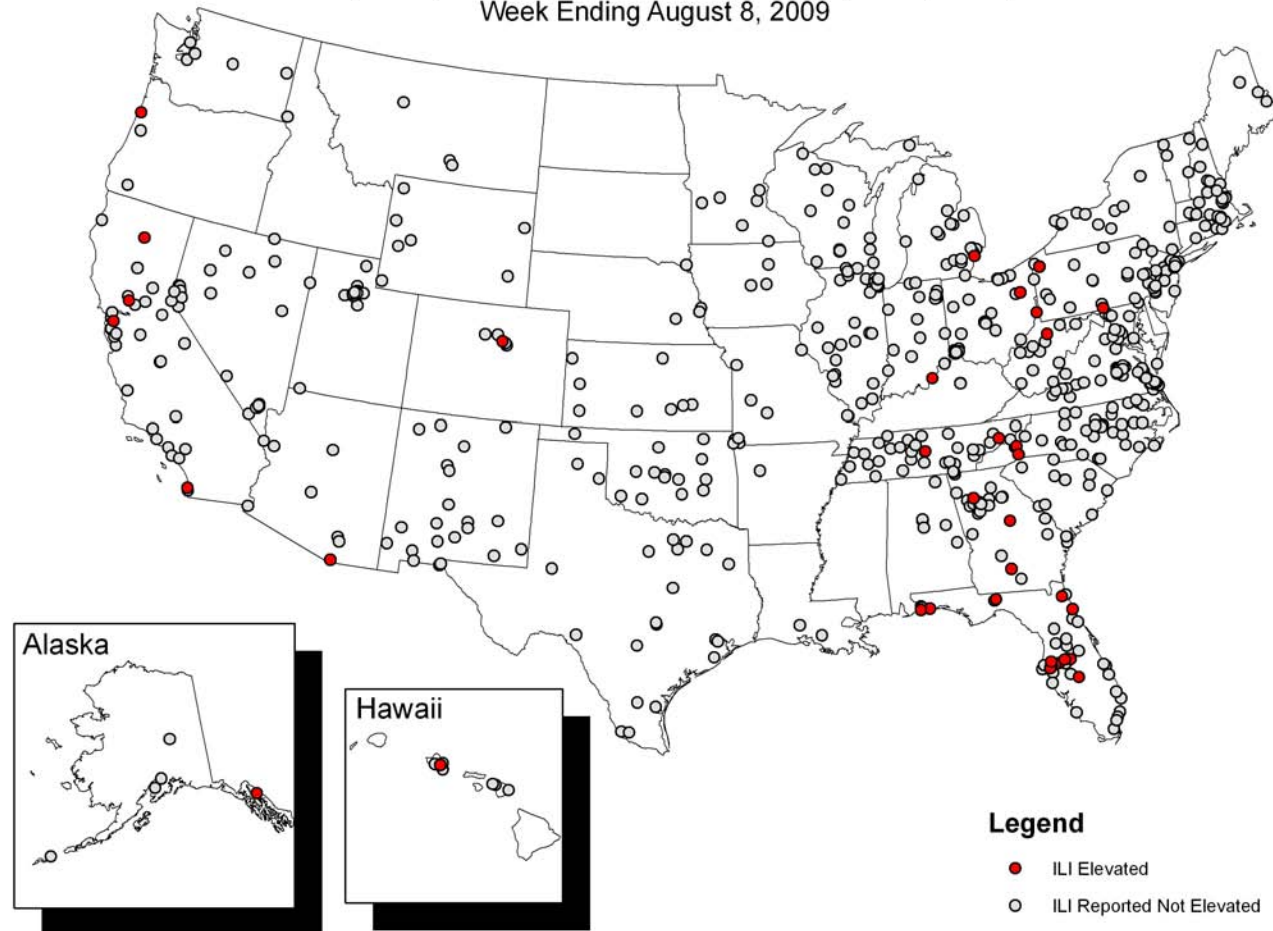
Region X - AK, ID, OR, WA



# Epidemiology/Surveillance

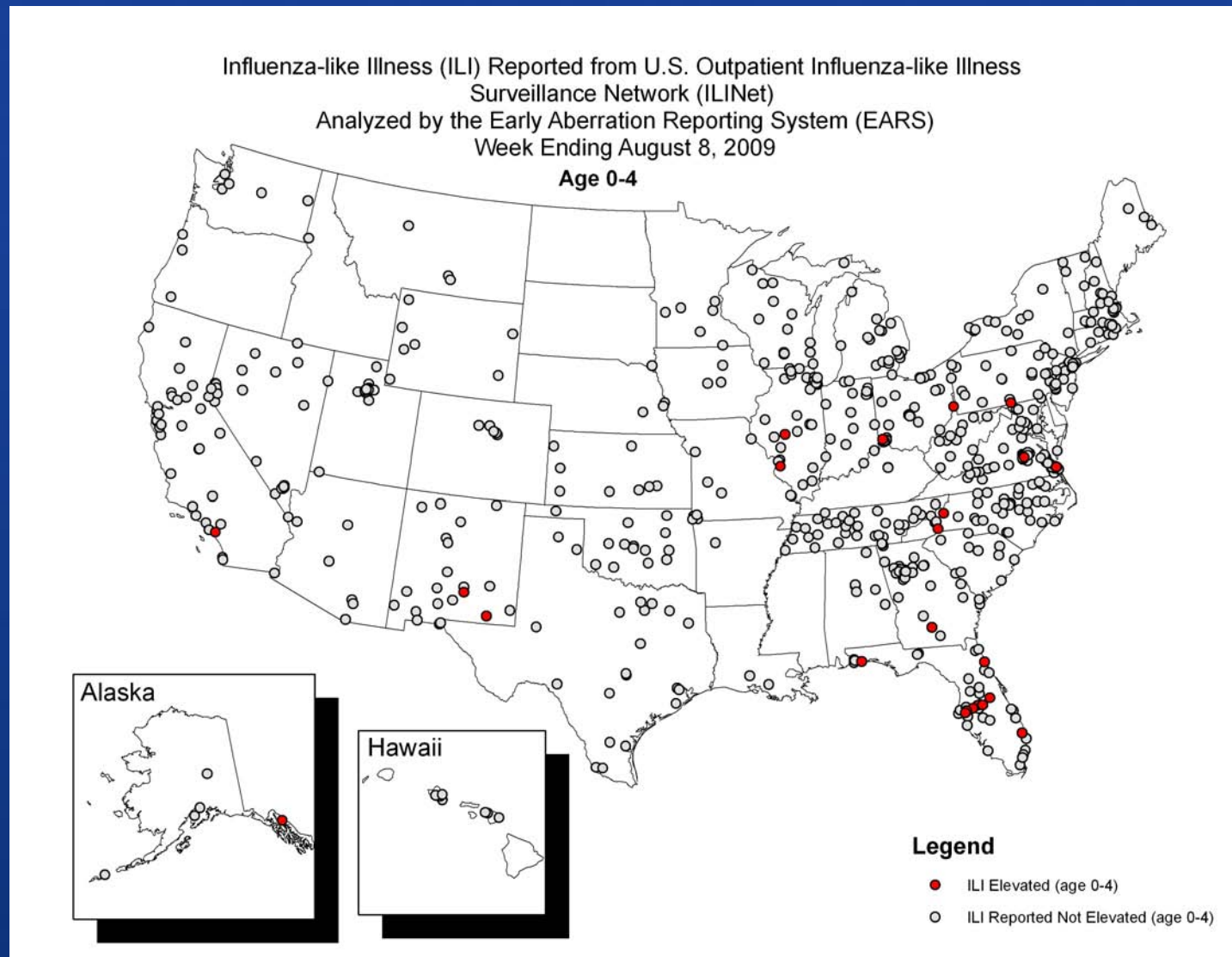
novel 2009-H1N1 – 14 AUG 2009

Influenza-like Illness (ILI) Reported from U.S. Outpatient Influenza-like Illness  
Surveillance Network (ILINet)  
Analyzed by the Early Aberration Reporting System (EARS)  
Week Ending August 8, 2009



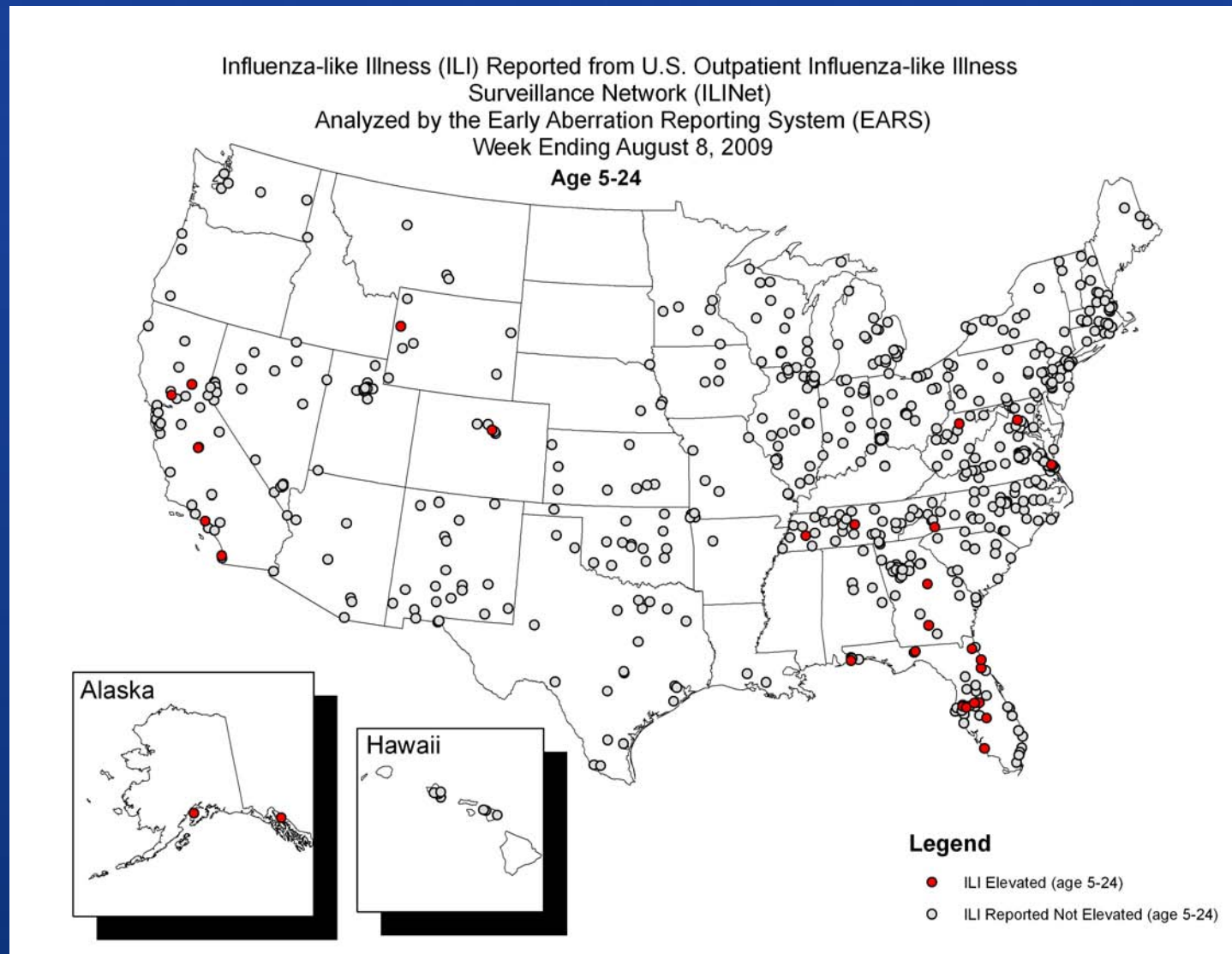
# Epidemiology/Surveillance

novel 2009-H1N1 – 14 AUG 2009



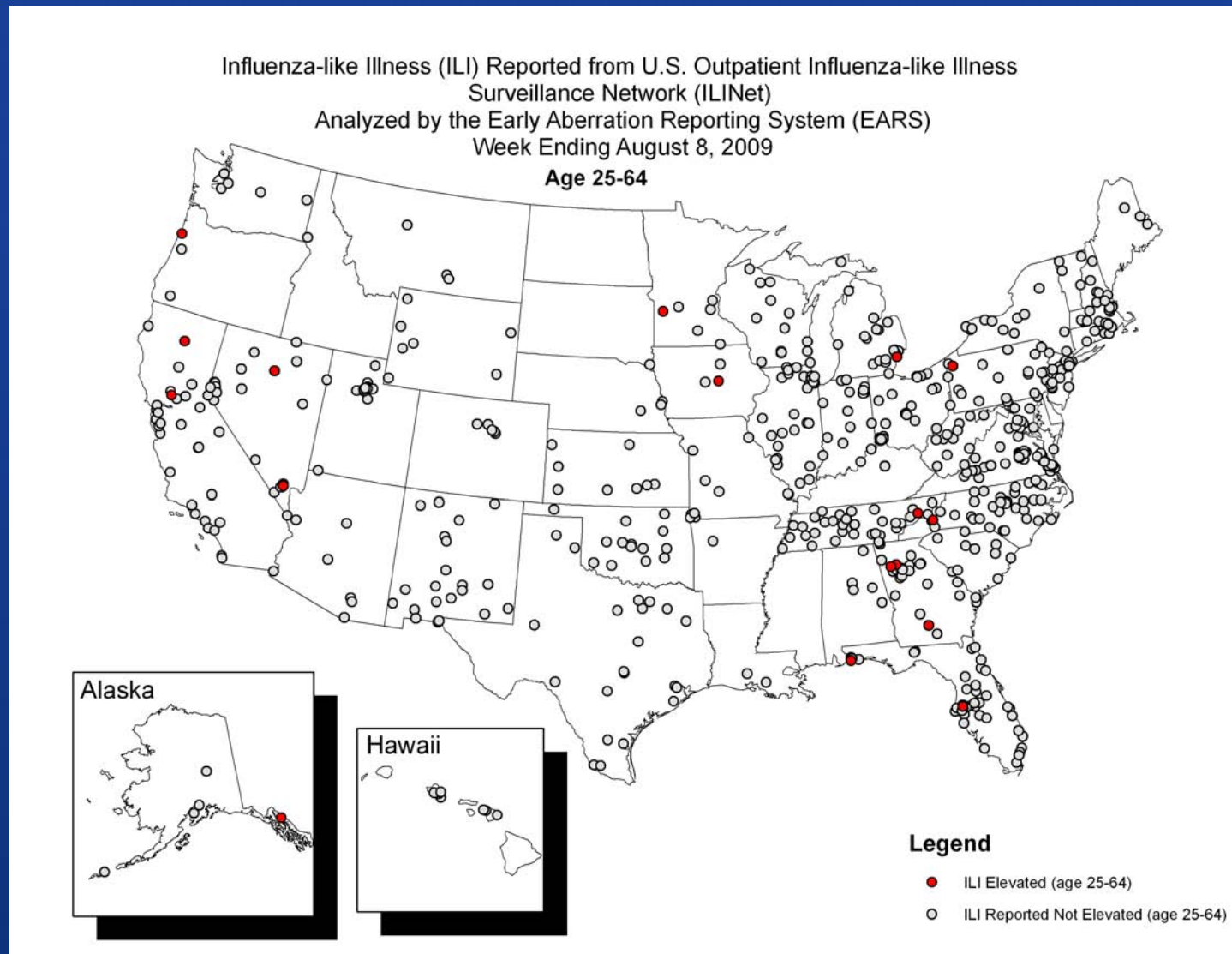
# Epidemiology/Surveillance

novel 2009-H1N1 – 14 AUG 2009



# Epidemiology/Surveillance

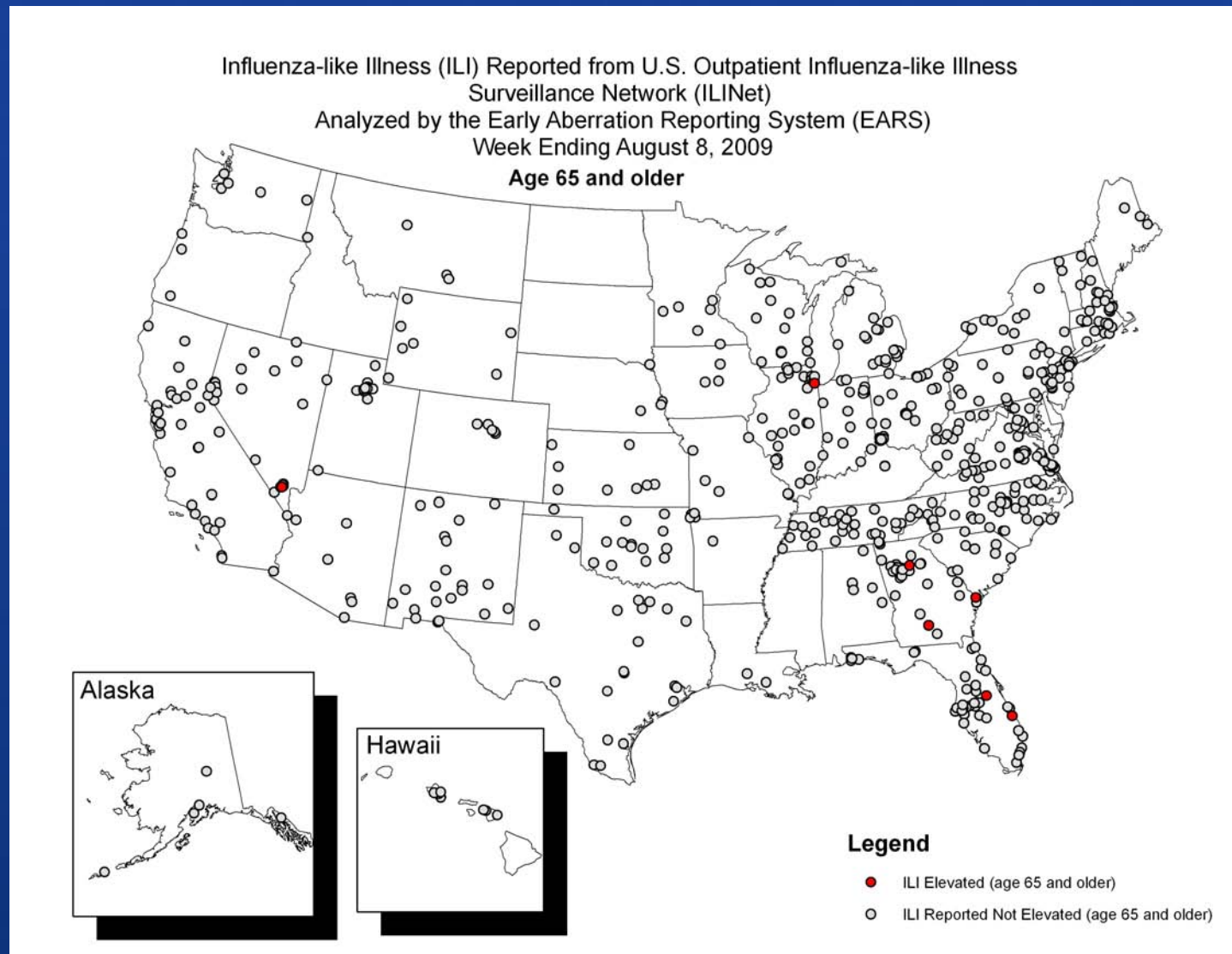
novel 2009-H1N1 – 14 AUG 2009





# Epidemiology/Surveillance

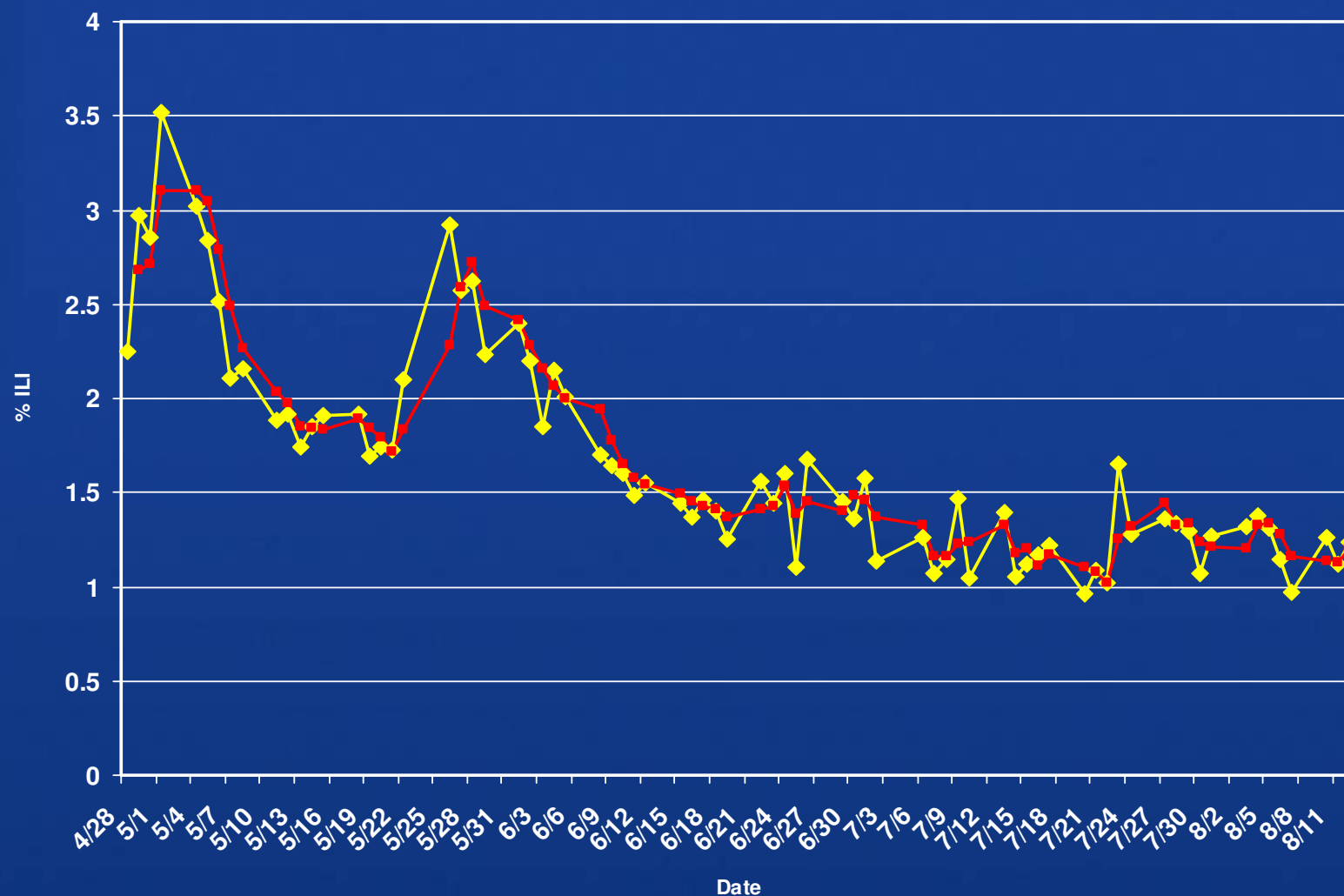
novel 2009-H1N1 – 14 AUG 2009



# Epidemiology/Surveillance

## Percentage of Visits Due to ILI Reported to ILINet\*, by day\*\*

### novel 2009-H1N1 – 11 AUG 2009



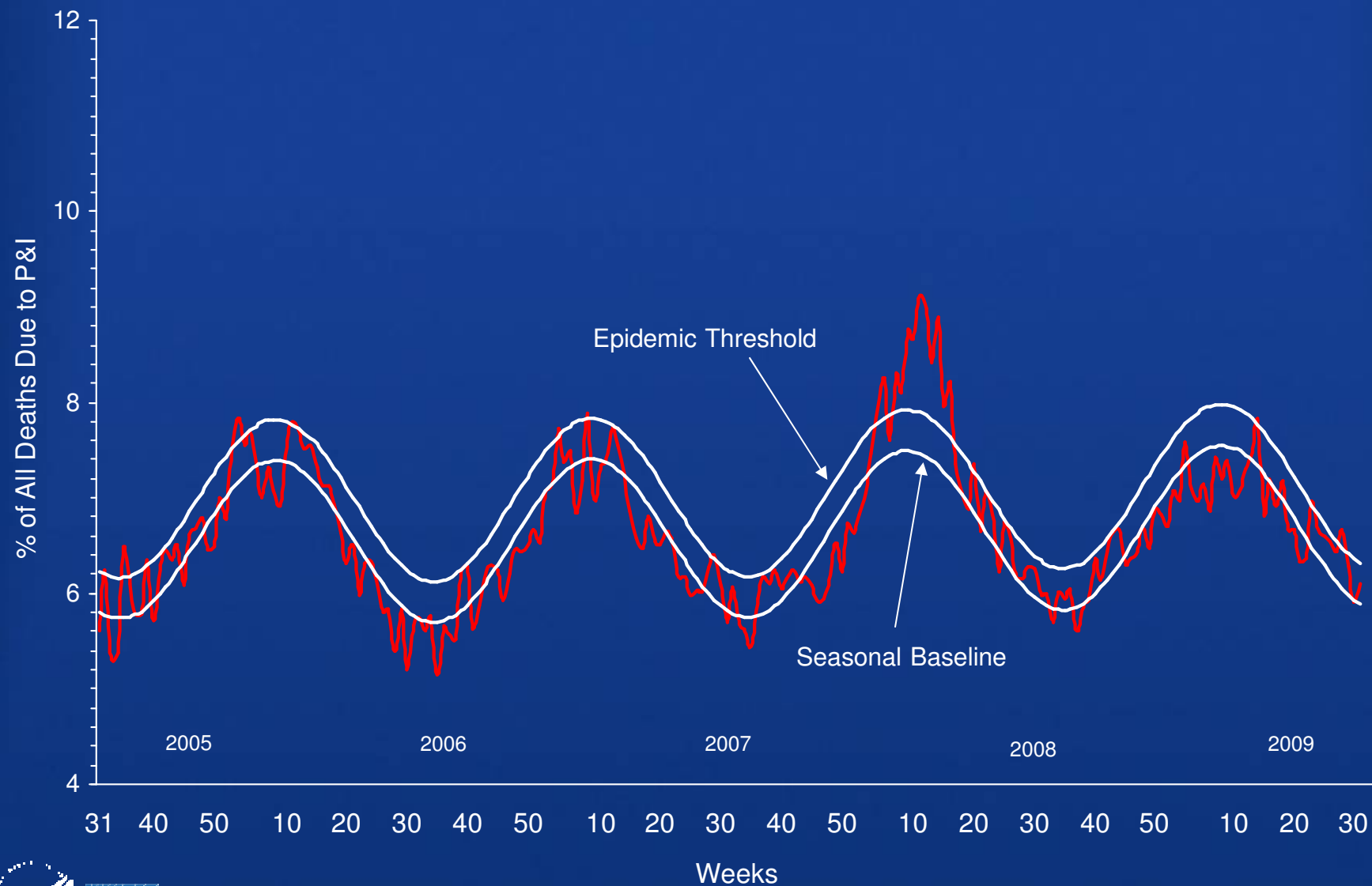
\*Average of 169 providers reporting per day

\*\*Weekend and holiday data excluded

◆ %ILI ■ Three Day Moving Average

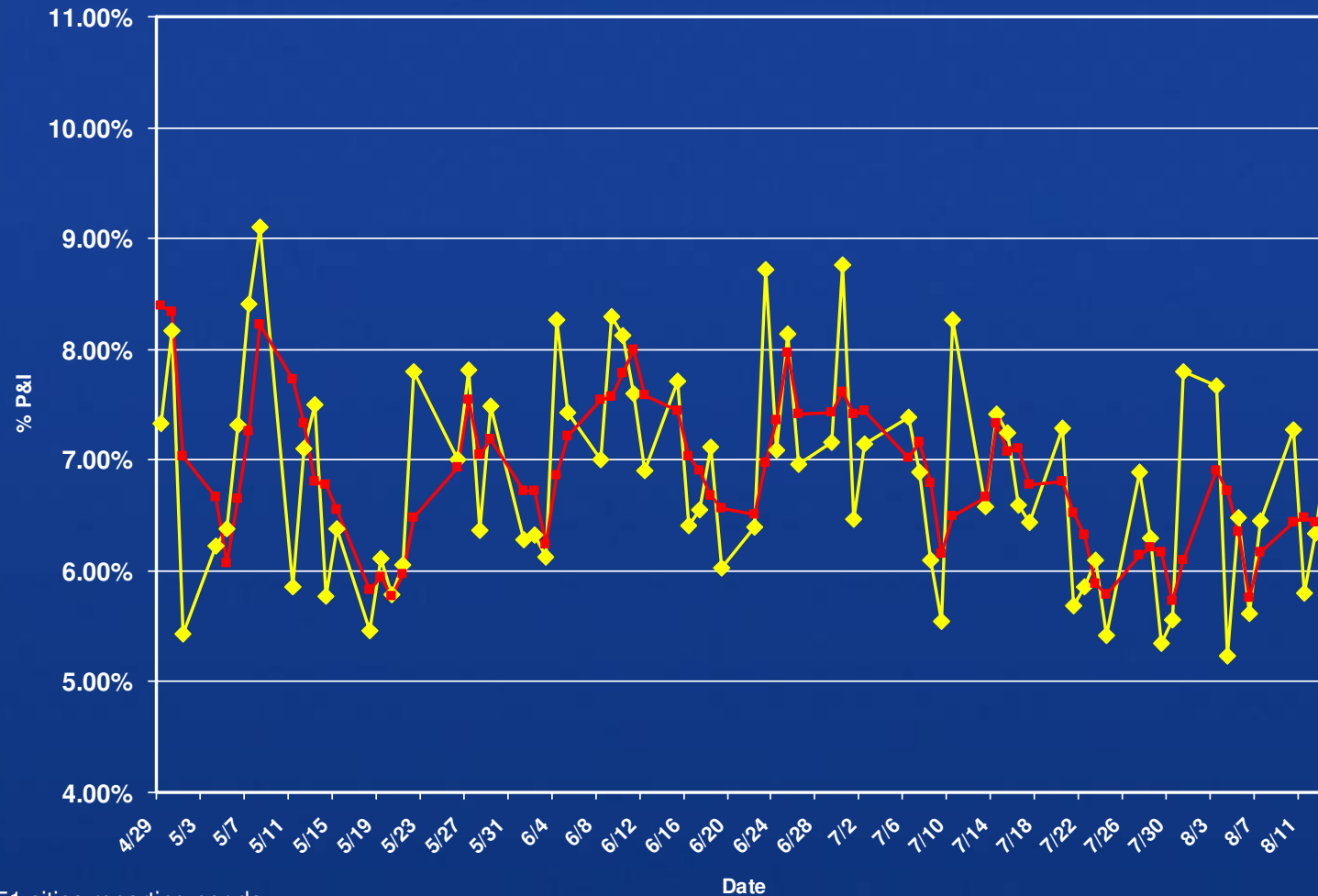


Epidemiology/Surveillance  
*ia and Influenza Mortality for 122 U.S. Cities*  
Week Ending 08/08/2009  
novel 2009-H1N1 – 14 AUG 2009





Epidemiology/Surveillance  
Percentage of Deaths Due to Pneumonia and Influenza  
Reported by 122 Cities\* Mortality Reporting System, by day\*\*  
novel 2009-H1N1 – 14 AUG 2009



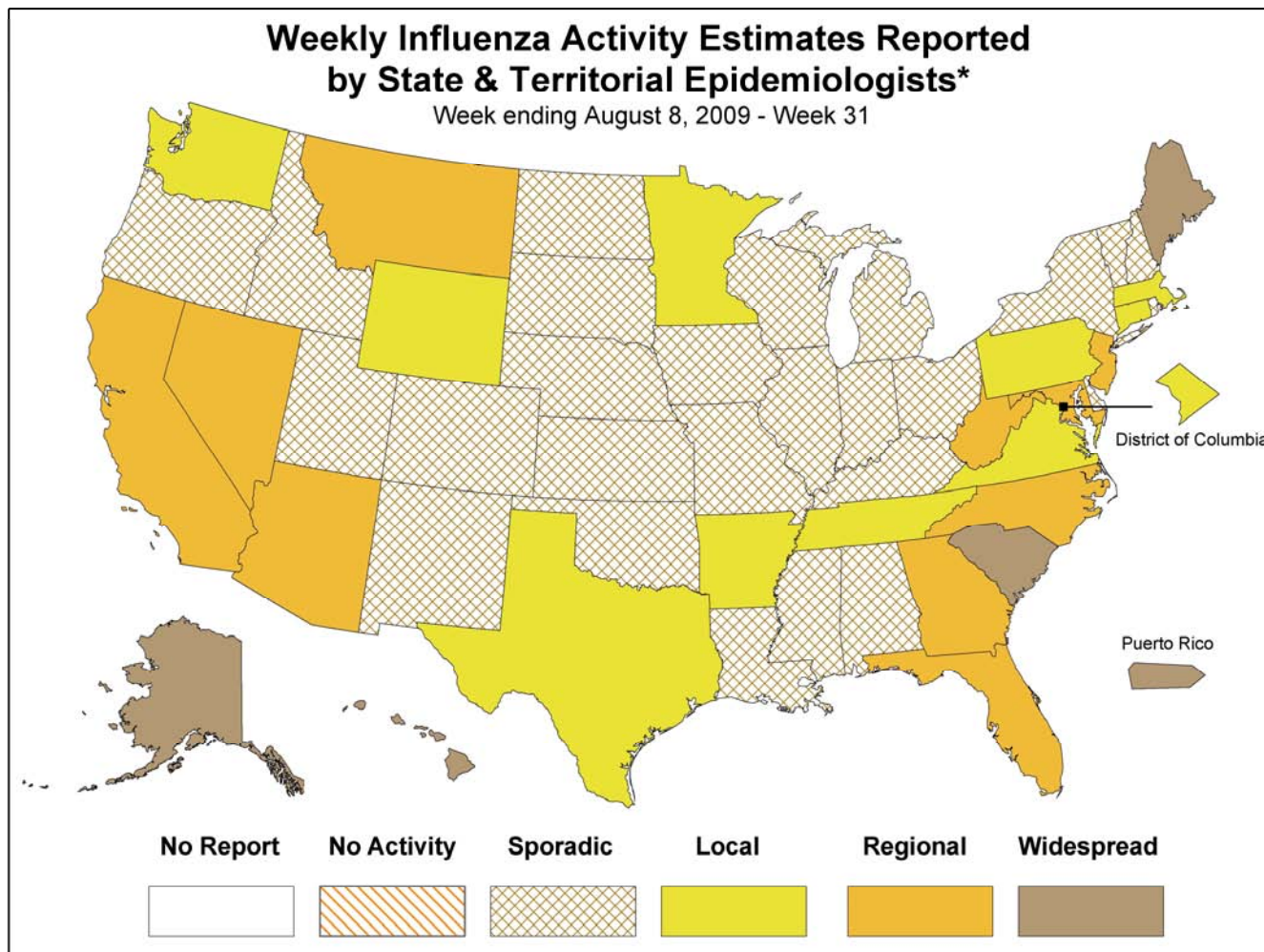
\*Average of 51 cities reporting per day

\*\*Weekend & Holiday data excluded

—◆— % P&I    —■— Three Day Moving Average



Epidemiology/Surveillance  
Weekly Influenza Activity Reported by SLTT's  
novel 2009-H1N1 – 14 AUG 2009



\* This map indicates geographic spread & does not measure the severity of influenza activity

## Community Measures Task Force (CMTF) novel 2009-H1N1 – 14 AUG 2009

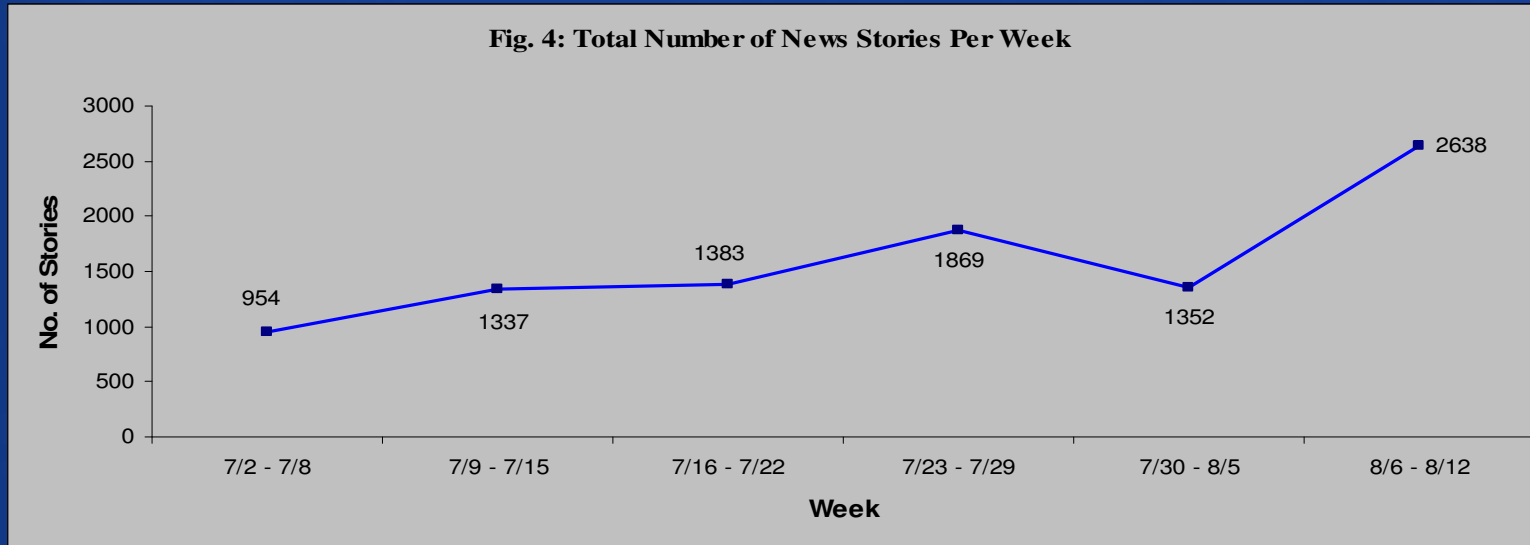
---

- **Surveillance**
  - **No H1N1-related school dismissals were detected in USA on August 13**
- **Guidance**
  - **Business Sector Guidance**
  - **College/University Guidance**
  - **Childcare Guidance**

# Joint Information Center (JIC)

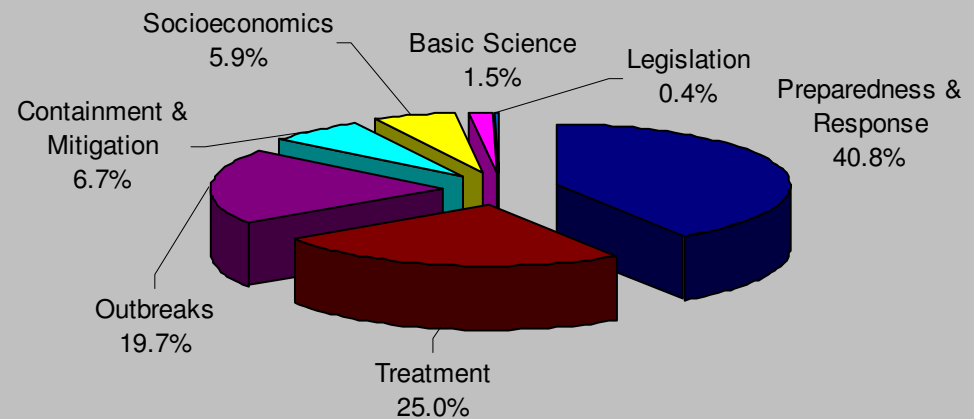
novel 2009-H1N1 – 14 AUG 2009

**Fig. 4: Total Number of News Stories Per Week**



**Figure 1: Distribution of News Topics (N=2638)**

**8/6 - 8/12**



Joint Information Center (JIC)  
***Public Inquires Since School Guidance***  
novel 2009-H1N1 – 14 AUG 2009

---

#### Additional Clarification

- New guidance different from previous?
- Difference between school dismissal and school closure?
- What are fever-reducing medications?
- How will communities know if the flu is more severe and they need to take additional steps?
- Should members of families with sick students stay home too?
- Why should we be concerned about spread of flu in schools?

#### Answered in guidance

- Exclusion period?
- What are the different types of dismissals?

#### Other applications

- How does guidance apply to my child at boarding school?
- To my child in college?

#### How do I follow the guidelines?

- We just received an email that there has been people that tested positive for the h1n1. One of them is in our football program. I need to sanitize and clean are football mats and other equipment what is the best way to clean them?
- When should I stop giving fever reducing medications to my child?
- What are cleansers that can be used to clean/disinfect surfaces on a bus?

