

**SWB
WOC**

ATF SOUTHWEST BORDER INITIATIVE PROJECT GUNRUNNER **WEAPONS OF CHOICE**

Firearms Markings

[Licensed Manufacturer
Marking Requirements](#)

[Licensed Importer
Marking Requirements](#)

Long Guns

AK47 Type Rifles

[Romarm Romak rifle](#)

[Romarm WASR rifle](#)

[Poly Tech AKS rifle](#)

[Maadi Co. ARM rifle](#)

[Norinco MAK90 rifle](#)

Pistols

[Beretta Model 92](#)

[Taurus PT Series](#)

[FN 57 pistol](#)

[Bushmaster Carbon
15 .223 pistol](#)

AR-15 Type Rifles

[Bushmaster XM15 rifle](#)

[Colt Sporter rifle](#)

[DPMS A-15 rifle](#)

[Rock River Arms LAR-15 rifle](#)

[Olympic/SGW/Safari CAR-AR rifle](#)

Model 1911 Type Pistols

[Colt Manufacturing](#)

[Kimber](#)

[U.S. Military Surplus](#)

.38 Super Pistols

[Colt Manufacturing](#)

[Taurus](#)

[Tanfoglio](#)

[H&K MP5 rifle](#)

[FN P90 rifle](#)

[Alexander Arms](#)

[Beowulf 50 rifle](#)

[Barrett 82A1 rifle](#)

Licensed **Manufacturer** Marking Requirements

Gun Control
Act of 1968

Licensed Manufacturer – 18 U.S.C., Chapter 44, § 923(i) and Title 27 CFR, § 478.92

1. SERIAL NUMBER

- *Must be on the frame or receiver*
- *Manufacturer cannot duplicate a serial number*

2. NAME of the MANUFACTURER

3. CITY & STATE of the MANUFACTURER

- (or recognized abbreviation)

4. MODEL

- (if assigned)

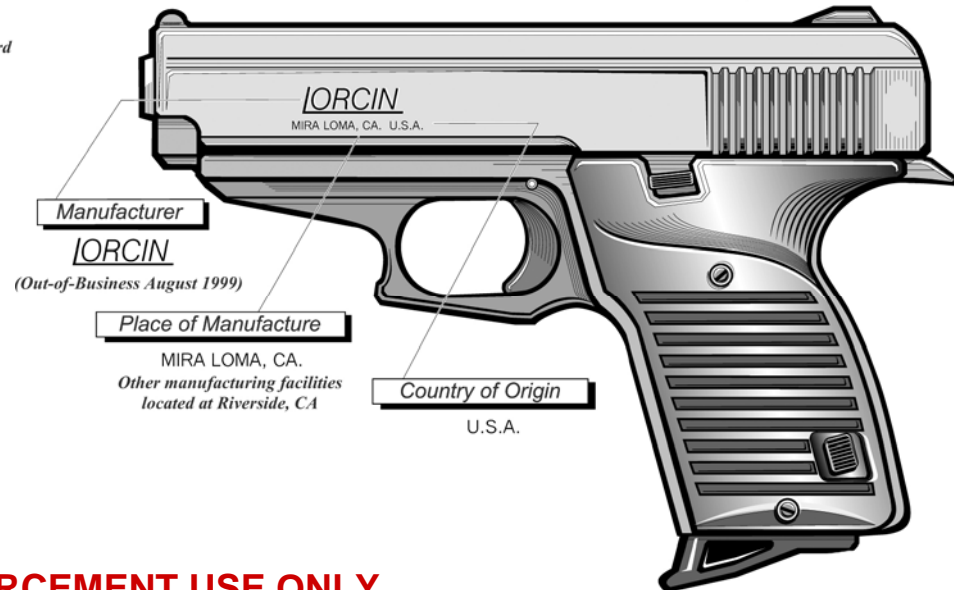
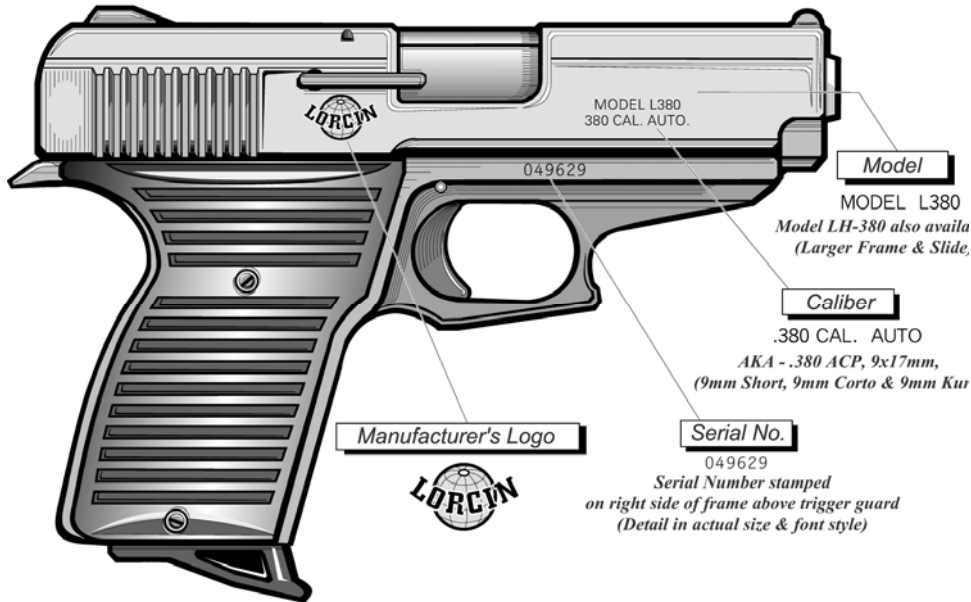
5. CALIBER or GAUGE

These markings must appear conspicuously on the frame, receiver, barrel (or slide).

Licensed **Manufacturer** Marking Requirements

Manufacturer:
Lorcin Engineering
Model: L380
Caliber: .380
Type: Pistol
Serial Number Location:
Right side of frame

TOC



Licensed **Importer**

Marking Requirements

Gun Control
Act of 1968

Licensed Importer – 18 U.S.C., Chapter 44, § 923(i) and Title 27 CFR, §178.92

1. SERIAL NUMBER

- Must be on the frame or receiver
- Importer cannot duplicate a serial number

2. NAME of the MANUFACTURER

3. COUNTRY of ORIGIN

4. MODEL

- (if assigned)

5. CALIBER or GAUGE

6. NAME of IMPORTER

7. CITY & STATE of the IMPORTER

- (or recognized abbreviation)

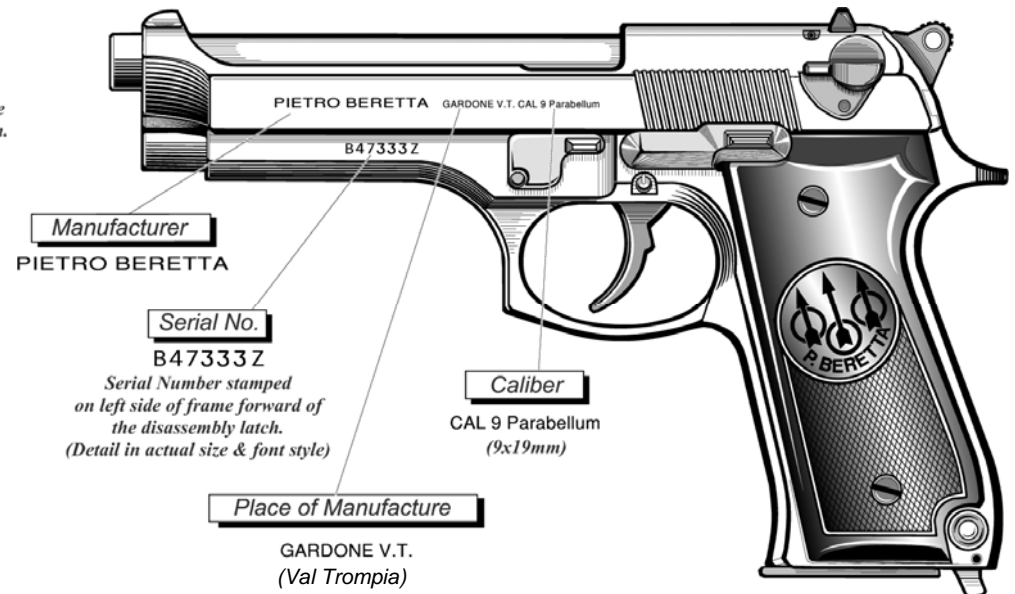
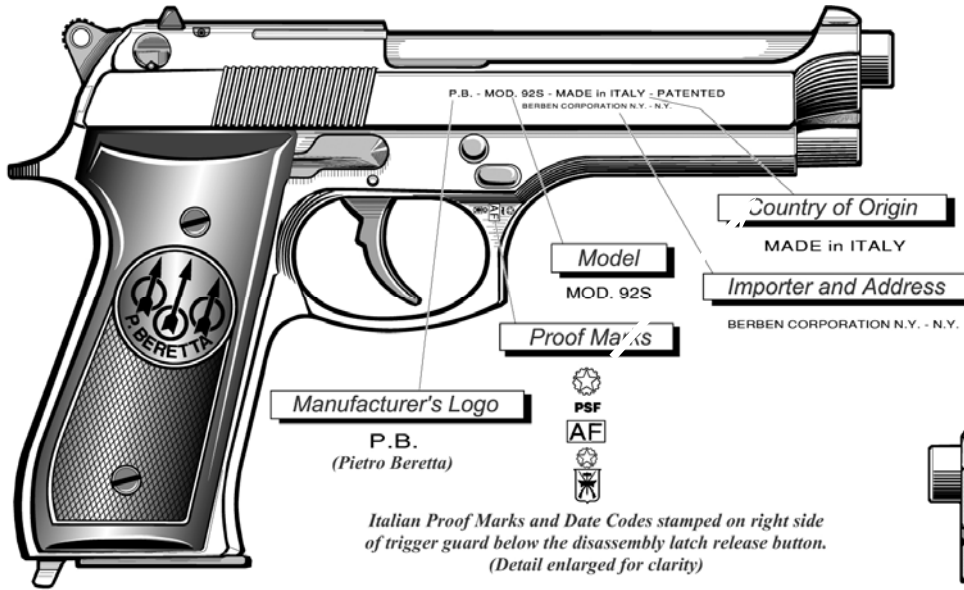
These markings must appear conspicuously on the frame, receiver, barrel (or slide).

Licensed **Importer**

Marking Requirements

Manufacturer:
Pietro Beretta
Model: 92S
Caliber: 9mm
Type: Pistol
Serial Number Location:
Left side of frame

TOC



Pistols *Beretta Model 92*

Manufacturer: Beretta, USA

Model: 92FS

Caliber: 9mm

Type: Pistol

Serial Number Location:
Left side of frame, forward
of trigger

[TOC](#)

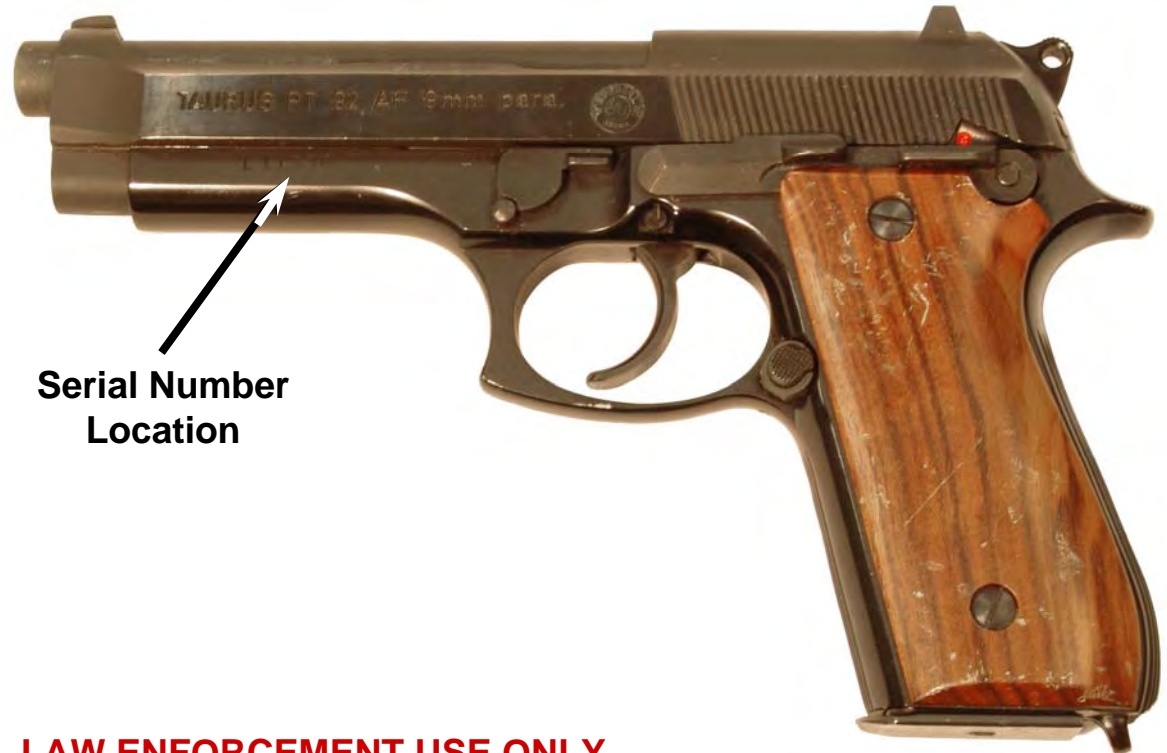


**Serial Number
Location**

Pistols *Taurus PT Series*

Manufacturer: Taurus
Model: PT 92
Caliber: 9mm
Type: Pistol
Importer: Taurus Int'l
Serial Number Location:
Left side of frame, forward
of trigger

[TOC](#)



**Serial Number
Location**

Pistols 1911 Type

Manufacturer: Colt Mfg Co
Model: Gold Cup Elite
Caliber: .45
Type: Pistol
Serial Number Location:
Right side of frame
over trigger

TOC



Serial Number
Location



Pistols 1911 Type

Manufacturer: Kimber
Model: Stainless Gold Match SE II
Caliber: .45
Type: Pistol
Serial Number Location:
Right side of frame
over trigger



**Serial Number
Location**

[TOC](#)



Pistols 1911 Type

Manufacturer: U.S. Military
Surplus
Model: 1911 A1
Caliber: .45
Type: Pistol
Serial Number Location:
Right side of frame
over trigger



**Serial Number
Location**

[TOC](#)



Pistols

1911 Type .38 Super Pistols

Manufacturer: Colt Mfg Co
Model: Gold Cup National Match
Caliber: .38 Super
Type: Pistol
Serial Number Location:
Right side of frame over trigger



Serial Number
Location

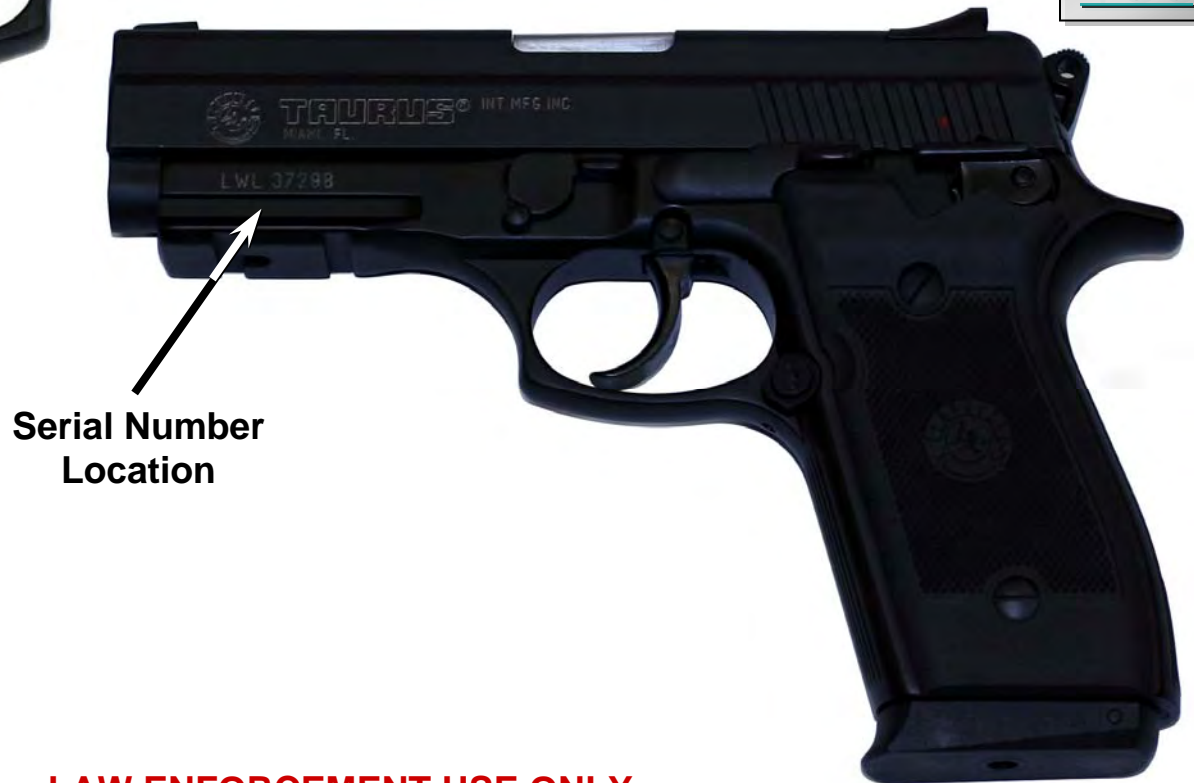
TOC



Pistols *.38 Super Pistols*

Manufacturer: Taurus
Model: PT 38S
Caliber: .38 Super Auto
Type: Pistol
Importer: Taurus Int'l
Miami, FL
Serial Number Location:
Left side of frame, forward
of trigger

[TOC](#)



**Serial Number
Location**

Pistols *.38 Super Pistols*



Serial Number
Location

Manufacturer: Tanfoglio
Model: WITNESS
Caliber: .38 Super Auto
Type: Pistol
Importer: European
American Armory (EAA)
Rockledge, FL
Country of Origin: Italy
Serial Number Location:
Right side of frame,
forward of trigger

TOC



Pistols *5-7 Pistols*



Manufacturer: Fabrique
Nationale

Model: Five-seveN USG

Caliber: 5.7 x 28mm

Type: Pistol

Importer: FNH-USA

Fredericksburg, VA

Country of Origin: Belgium

Serial Number Location:

Right side of frame, forward of
trigger below barrel

[TOC](#)

**Serial Number
Location**

Pistols *Carbine*

Manufacturer: Bushmaster
Model: Carbon 15
Caliber: .223 (5.56mm)
Type: Pistol
Serial Number Location:
Left side of receiver, aft of trigger above grip

TOC



Serial Number
Location

Long Guns *AK-Type*

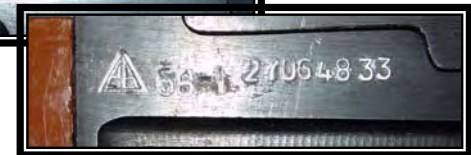
Manufacturer: NORINCO
Model: MAK 90
Caliber: 7.62 X 39mm
Type: Rifle
Serial Number Location: Left side of receiver, above and left of magazine

TOC



Serial Number Location

**Variations of model designation, factory or arsenal codes*



Long Guns *AK-Type*

Manufacturer: ROMARM/CUGIR

Model: ROMAK 99.1

Caliber: 7.62 X 39mm

Type: Rifle

Importer: D.I.G.

Virginia Beach, VA

Country of Origin:

Serial Number Location: Left side of receiver, above and left of magazine*

**Do not confuse model designation, factory or arsenal codes as part of serial number*

RIGHT SIDE

TOC

Serial Number Location

LEFT SIDE

Long Guns *AK-Type*

Manufacturer: ROMARM

Model: WASR

Caliber: 7.62 X 39mm

Type: Rifle

Importer: CAI

Georgia, VT

Country of Origin:

Serial Number Location: Left side of receiver, above and left of magazine

[TOC](#)

RIGHT SIDE

MADE BY CN ROMARM SA/ QUBR
IN ROMANIA
IMPORTED CAI GEORGIA, VT

LEFT SIDE

WASR
Cal. 7.62x39mm

Serial Number Location

1-25739-2001

Long Guns *AK-Type*

Manufacturer: Poly Tech

Model: AKS

Caliber: 7.62 X 39mm

Type: Rifle

Importer: KFS

Atlanta, GA

Country of Origin:

Serial Number Location: Left side of receiver, above and left of magazine*

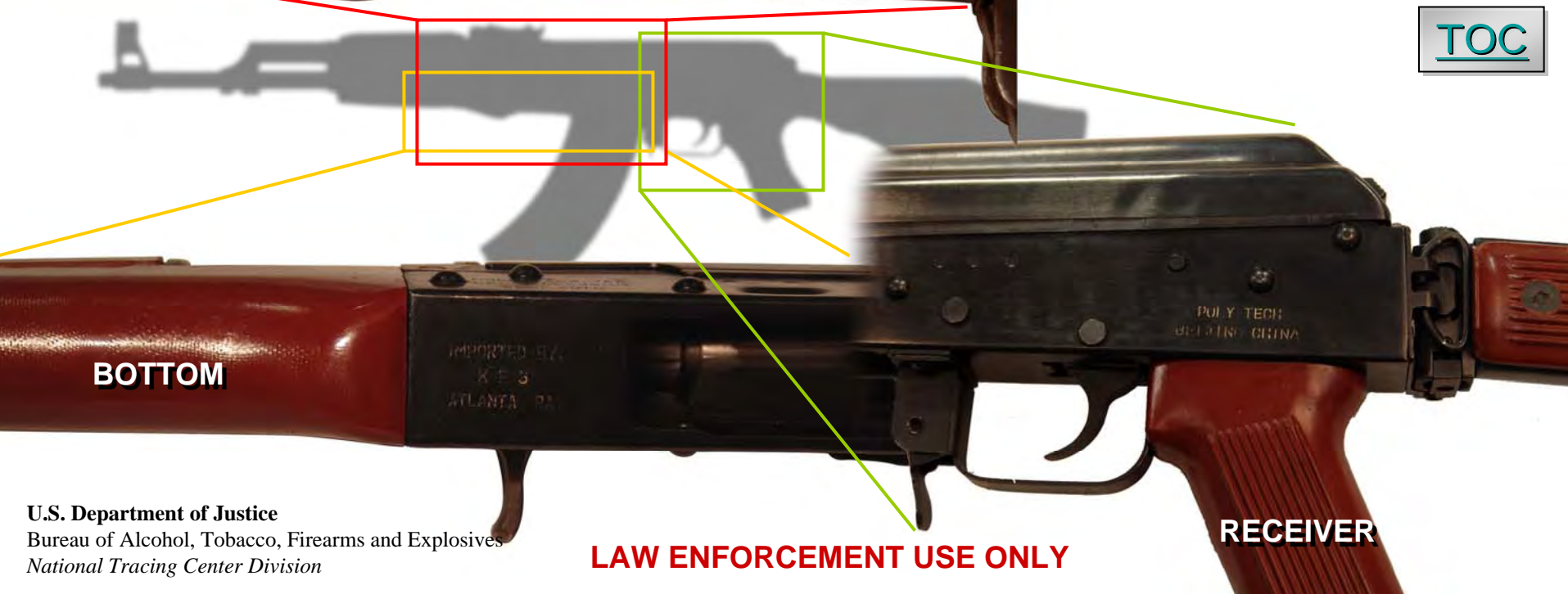
**Do not confuse model designation, factory or arsenal codes as part of serial number*

[TOC](#)



LEFT SIDE

Serial Number Location



BOTTOM

RECEIVER

LAW ENFORCEMENT USE ONLY

Long Guns *AK-Type*

Manufacturer: Maadi Company

Model: ARM

Caliber: 7.62 X 39mm

Type: Rifle

Importer: A.C.C. INT/INTRAC
Knoxville, TN

Country of Origin:

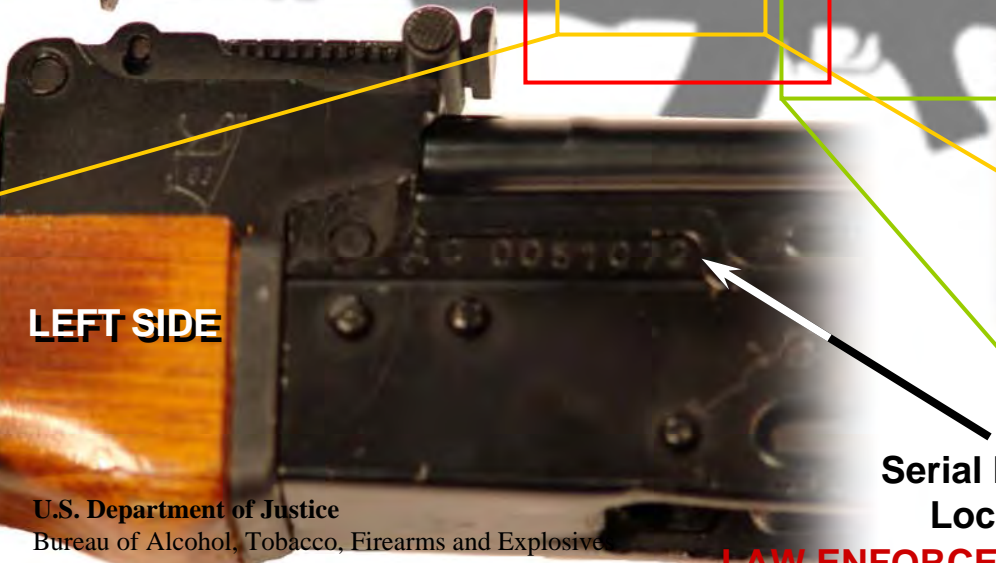
Serial Number Location: Left side
of receiver, above and left of
magazine*

**Do not confuse model designation,
factory or arsenal codes as part of
serial number*



RIGHT SIDE

[TOC](#)



LEFT SIDE

**Serial Number
Location**



RECEIVER

Long Guns *AK-Type*

Manufacturer: NORINCO

Model: MAK 90 Sporter

Caliber: 7.62 X 39mm

Type: Rifle

Importer: Compassecoco
Bardstown, KY

Country of Origin:

Serial Number Location: Left side
of receiver, above and left of
magazine*

**Do not confuse model designation,
factory or arsenal codes as part of
serial number*

[TOC](#)

LEFT SIDE

**Serial Number
Location**

RECEIVER

LAW ENFORCEMENT USE ONLY

Long Guns *AR-15 Type*

Manufacturer: Bushmaster

Model: XM15-E2S

Caliber: .223 (5.56mm)

Type: Rifle

Serial Number Location: Left side of receiver, on magazine well*

**Typical location for M16/AR-15 style firearms*

[TOC](#)



**Serial Number
Location**

LAW ENFORCEMENT USE ONLY

U.S. Department of Justice
Bureau of Alcohol, Tobacco, Firearms and Explosives
National Tracing Center Division

Long Guns *AR-15 Type*

Manufacturer: Bushmaster

Model: XM15-E2S

Caliber: .223 (5.56mm)

Type: Rifle

Serial Number Location: Left side of receiver, on magazine well*

**Typical location for M16/AR-15 style firearms*

LAW ENFORCEMENT USE ONLY

TOC



Serial Number Location

Long Guns *AR-15 Type*

LAW ENFORCEMENT USE ONLY

Manufacturer: Colt Mfg. Co.

Model: Sporter Lightweight

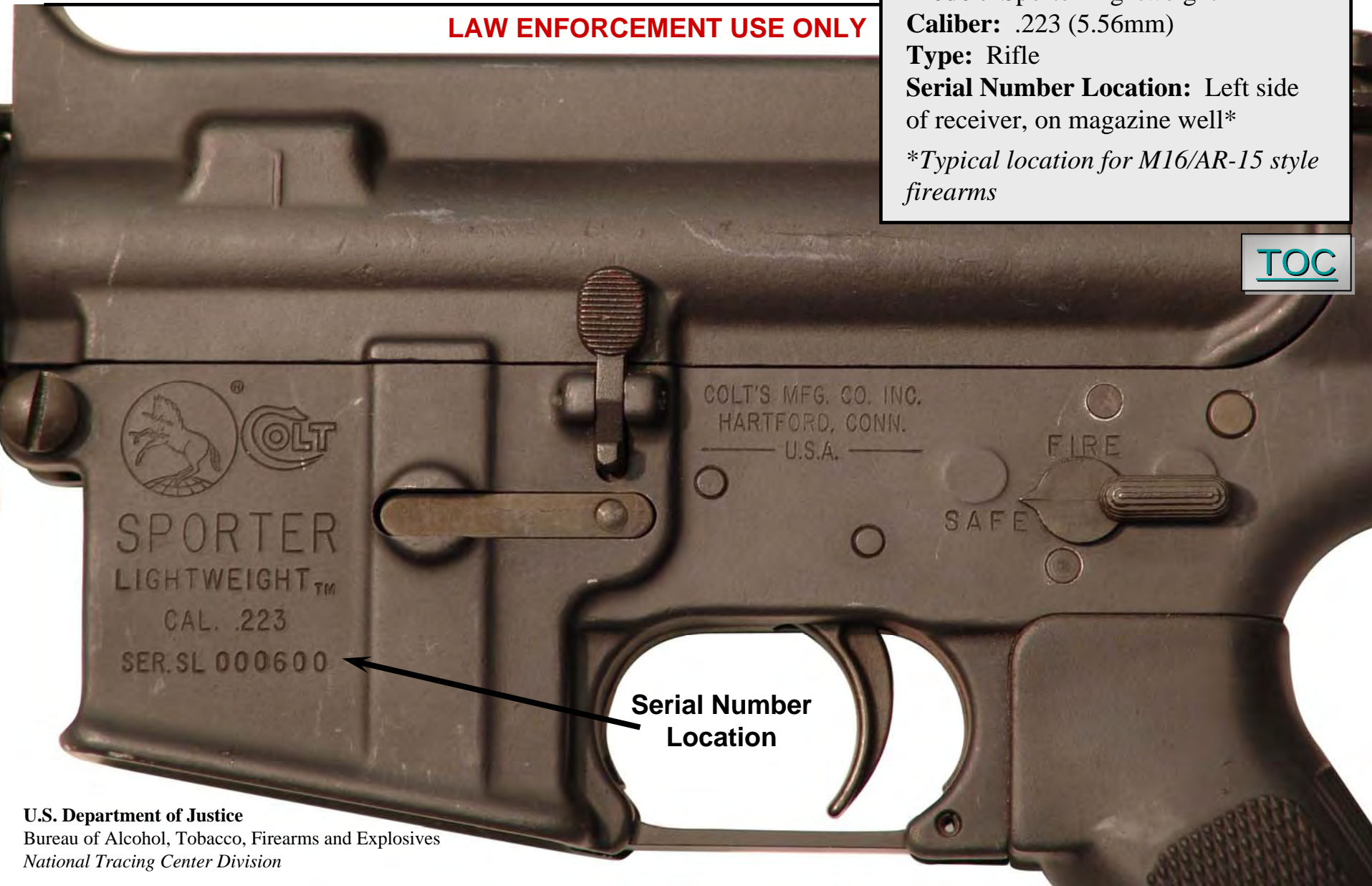
Caliber: .223 (5.56mm)

Type: Rifle

Serial Number Location: Left side of receiver, on magazine well*

**Typical location for M16/AR-15 style firearms*

[TOC](#)



Serial Number Location

Long Guns *AR-15 Type*

Manufacturer: D.P.M.S.

Model: A-15

Caliber: .223 (5.56mm)

Type: Rifle

Serial Number Location: Left side of receiver, on magazine well*

**Typical location for M16/AR-15 style firearms*

TOC



CAL. 223-5.56
MOD: A-15
SN: 4316

D.P.M.S. INC.
BECKER MN.
USA

FIRE

SAFE

Serial Number
Location

Long Guns *AR-15 Type*

Manufacturer: Rock River Arms

Model: LAR-15

Caliber: .223 (5.56mm)

Type: Rifle

Serial Number Location: Left side of receiver, on magazine well*

**Typical location for M16/AR-15 style firearms*

TOC



ROCK
RIVER
ARMS

CLEVELAND, IL

CAL. 5.56MM
LAR-15

CM 17453

Serial Number
Location

SAFE FIRE

Long Guns *AR-15 Type*

Manufacturer: S.G.W.

Model: CAR-AR

Caliber: .223 (5.56mm)

Type: Rifle

Serial Number Location: Left side of receiver, on magazine well*

**Typical location for M16/AR-15 style firearms*

[TOC](#)



**Serial Number
Location**

Long Guns *Machineguns*

Manufacturer: Heckler & Koch
Model: MP5
Caliber: 9mm
Type: Machinegun
Serial Number Location: Top of receiver

Serial Number Location



[TOC](#)

Long Guns *Rifles*

LAW ENFORCEMENT USE ONLY

Manufacturer: Fabrique Nationale

Model: P90

Caliber: 5.7 X 28mm

Type: Rifle

Importer: FNH-USA

Fredericksburg, VA

Country of Origin: Belgium

Serial Number Location: Left side of receiver, forward of magazine

**Serial Number
Location**



[TOC](#)

Long Guns *.50 Caliber*

LAW ENFORCEMENT USE ONLY

Manufacturer: Alexander Arms
Model: Beowulf
Caliber: .50 Beowulf
Type: Rifle
Serial Number Location: Left side of receiver, on magazine well



TOC

Long Guns *.50 Caliber*

LAW ENFORCEMENT USE ONLY

Manufacturer: Barrett Mfg. Inc.

Model: 82A1

Caliber: .50 BMG

Type: Rifle

Serial Number Location: Left side of receiver, on magazine well



Serial Number Location

TOC