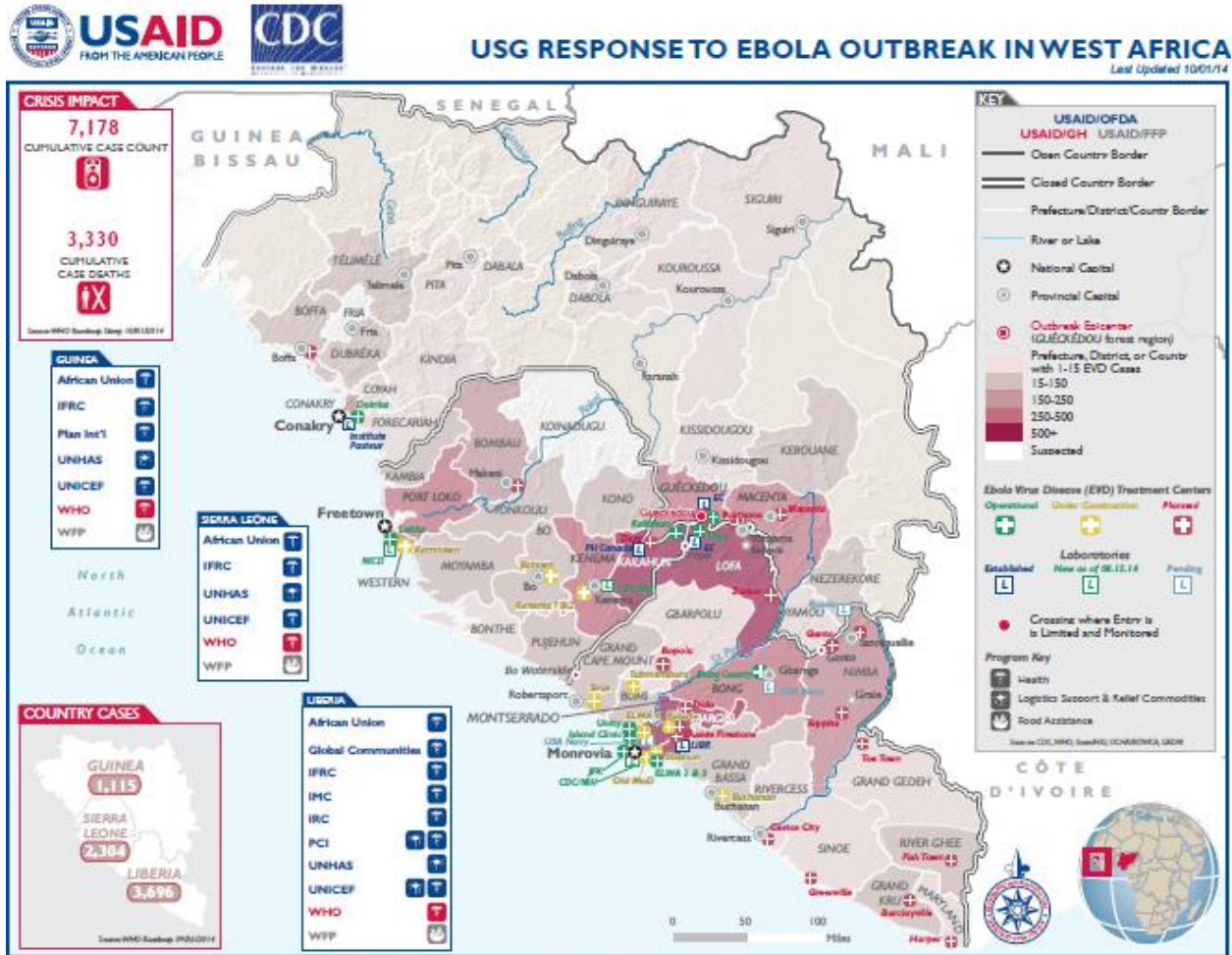


UNITED ASSISTANCE INTELLIGENCE SUMMARY

Info Cut-off: 050400LOCT14

5 October 2014



The boundaries, names, and data used on this map do not imply official endorsement or acceptance by the U.S. Government and are not drawn to scale.

(U) Executive Summary: *There has been no significant reporting in the last 24 hours and the security situation in Liberia will likely remain stable in the near term. Port and road logistical constraints as well as inclement weather will continue to complicate OUA construction projects. Common themes in reporting remain insufficient burial team capacity to deal with increasing EVD fatalities as well as community mistrust of such teams and family attempts to care for infected persons within the home.*

(U) Liberia:

UNCLASSIFIED

(U) **UN Experiencing Significant Logistic Delays:** Lack of capacity at the Roberts International Airfield is affecting UN materiel movements and insufficient storage capacity is detrimental to logistic capabilities. UN partners report constraints in accessing Liberian airports and seaports. Access to all Liberian points of entry must be coordinated 36 hours in advance. The UN is working with the Liberian government and USAID to solve this issue. *Logistics is critical to success during the initial phase of operations in Liberia. Restraints on inbound supplies will reduce the rate of production for all construction projects from living areas to ETU construction.*

(U) **Bomi County Update:** Liberia Ministry of Health reports that on 1 October, the Center for Disease and Control and U.S. Peace Corps had arrived in Bomi County to support health professionals. The county had six people in quarantine and one person confirmed dead as of 1 October. The community is still attempting to hide EVD-infected patients and care for them at home. County officials are working to educate the populace to seek help for EVD-affected people. *The outer county Liberian populace is guarded when providing information to the government. The populace needs to be informed that hiding EVD victims will likely spread the disease, rather than help contain it. Liberians are concerned the government does not communicate patient status after admission to health facilities.*

(U) **Maryland County Update:** The Ministry of Health oversaw two days of epidemiological surveillance training. County officials have established an EVD holding center at Pleebo Health Center. Maryland County has 4 people in EVD quarantine and is tracking 12 additional people showing symptoms who will remain in their residences. Maryland county officials are requesting vehicles for patient and specimen transport. County officials also need support with burial services. *With lack of infrastructure in the outer county regions, many concerns are focused on how to handle EVD patients. Treatment services need to be brought to each county to address lack of county capabilities.*

(U) **USAID Supports Safe Burial Teams:** Liberia has 50 recognized burial teams active throughout the nation. USAID oversaw the training of teams in all 15 counties. Burial of EVD victims has been a concern of the government and the populace. Burial teams are active 24 hours a day, 7 days a week and are still unable to meet countrywide demand. With USAID support, Montserrado County ran a four-day project to bury all EVD victims. Eighteen percent of those who died from EVD remain unburied. *EVD is spread often during the handling of EVD victim bodies. The bodies need to be moved and processed by trained professionals to minimize risk of infection. Transparency and explanation of this process will be crucial to the morale of the citizens.*

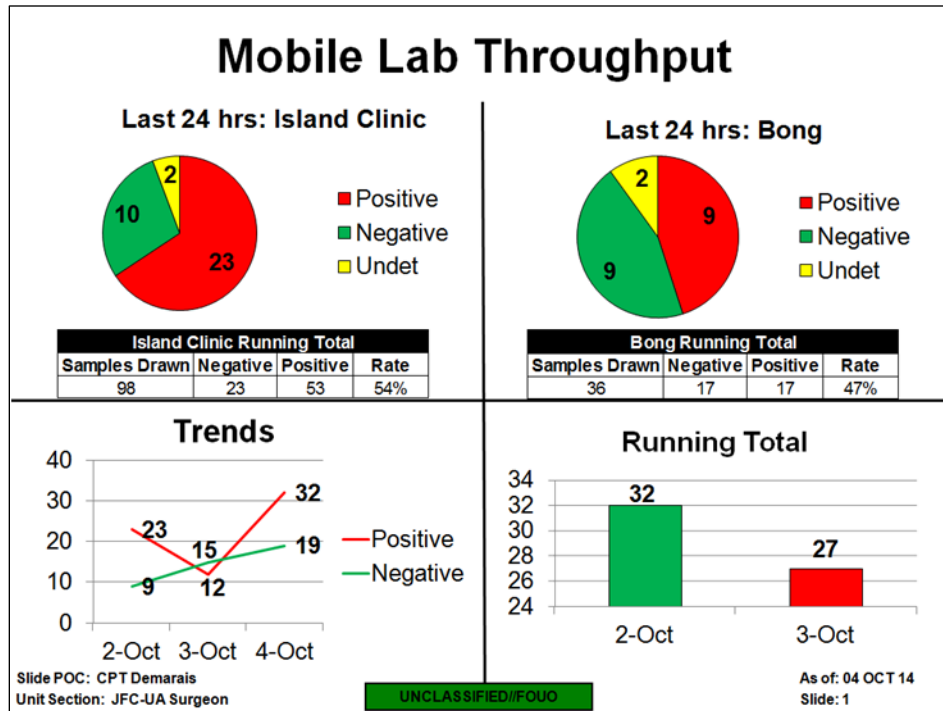
UNCLASSIFIED

(U) Buchanan Seaport Capabilities Assessment:

Buchanan Seaport consists of two berths. Berth one is 255m long with a draft 10.5m. Berth two is 132m long with a draft of 9.2m. The maximum vessel length for this seaport is 180m. The seaport has no material handling equipment and limited storage capabilities. All storage is charged by the week. No navigational aids are available and hours of operations at the seaport are 0600 to 1730. *Seaport Buchanan has very limited capacity to support logistical operations. The port's lack of storage and equipment for unloading will hinder U.S. logistics operations. Equipment can be requested but will be expensive.*



(U) Germany's First Ebola Aid Arrives in Liberia: On 3 October, Germany's first donations of medical aid to fight the Ebola outbreak arrived in Monrovia on an air force plane from Dakar. In separate reporting, German health officials confirmed on 3 October that a Ugandan doctor who contracted Ebola in Sierra Leone had been admitted to a hospital in Frankfurt. He is the second Ebola victim to be treated in the country. *Liberian residents will likely see this as a positive sign of progression toward defeating Ebola as international aid continues to increase.*



(U) JOA (Sierra Leone, Guinea, Senegal, Liberia)

(U) **Eid Celebrations Subdued in West Africa:** Celebrations for the Muslim festival Eid al-Adha have been significantly reduced this year due to the EVD crisis. Mosques and other public places regularly used for prayer have been deserted in Guinea, while imams in Sierra Leone told Muslims not to shake hands or embrace. Outside the JOA, approximately two million Muslim pilgrims have travelled to Mecca for the festival, and Saudi officials noted there were no EVD cases among the pilgrims. *Guinea has a Muslim population of approximately 85%, Sierra Leone 60-71%, and Liberia 20%. Guidance on counter-EVD precautions from the Muslim communities in these countries will help control the spread of the disease. OUA engagement with religious leaders offers an effective, alternate means of disseminating counter-EVD information to the population.*

(U) **Weather:**

(U) Dakar will see minimal impacts to airfield operations with low cloud cover while temperatures continue to produce marginal conditions for personnel.

(U) In Liberia, heavy precipitation will continue with isolated thunderstorm activity expected through the 8th and returning on the afternoon of the 9th. Degraded roadways will continue and remain difficult to traverse due to saturated and muddy ground conditions. The greatest impact to all assets will occur from the evening of the 5th lasting through the 6th with increased thunderstorm activity and rain amounts.

