

OFFICE OF SECURE TRANSPORTATION



Command Briefing

March 2008

- **Provide Safe and Secure Ground Transportation of Nuclear Weapons, Nuclear Weapon Components and Special Nuclear Material**
- **Provide Safe and Secure Air Transportation of Nuclear Weapon Components**
- **Conduct Other Missions Supporting the National Security of the United States**

Ensure mission success amidst a dynamic, complex and asymmetrical safety and security environment.

ACTIVE SECURITY DOCTRINE



- **Detect, Deter, Disrupt Threat**
- **Be Prepared to Defend, Recapture, Recover**

Operationally-Focused, Intelligence-Driven Organization

ACTIVE SECURITY DOCTRINE



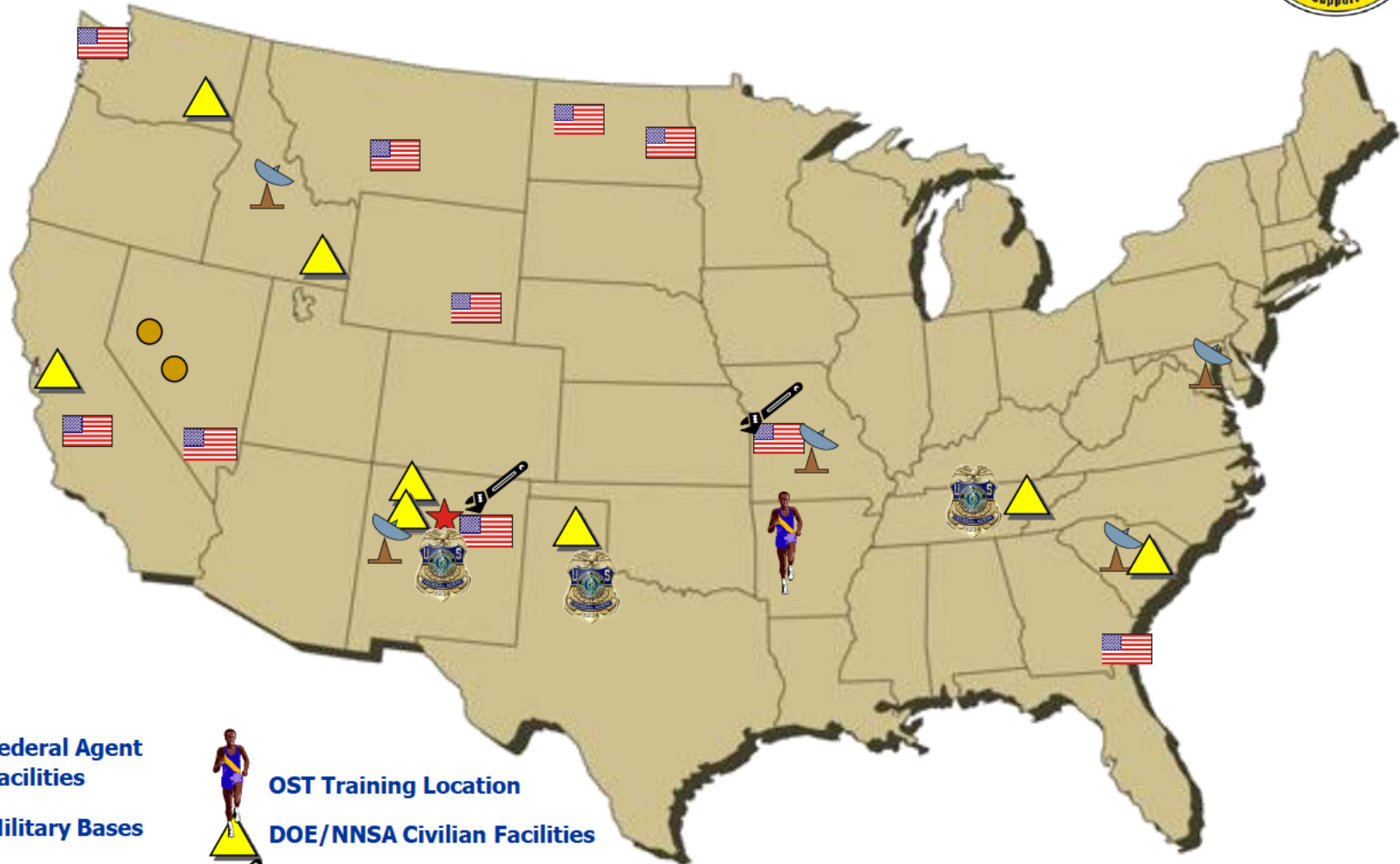
■ Intellectual Component

- ❑ Anticipate the Operating Environment
- ❑ Create an Environment of Uncertainty
- ❑ Initiative-Based Tactics and Command and Control

■ Practical Component

- ❑ Robust C4ISR Architecture
- ❑ Focused Intelligence Cycle
- ❑ Ruthless Alertness to Adversary Patterns
- ❑ “Habits of Unpredictability”
- ❑ Control Operating Space
- ❑ Brilliance in the Basics

OST OPERATIONS TODAY



**Federal Agent
Facilities**



Military Bases



DOE/NNSA



OST HQ



OST Training Location



DOE/NNSA Civilian Facilities



OST Modification Facilities

OST Relay Stations

OST ROUTE SYSTEM



NNSA/OST ORGANIZATION



National Nuclear Security Administration, NA-1
Thomas P. D'Agostino
Administrator

Defense Programs, NA-10
Robert L. Smolen
Deputy Administrator

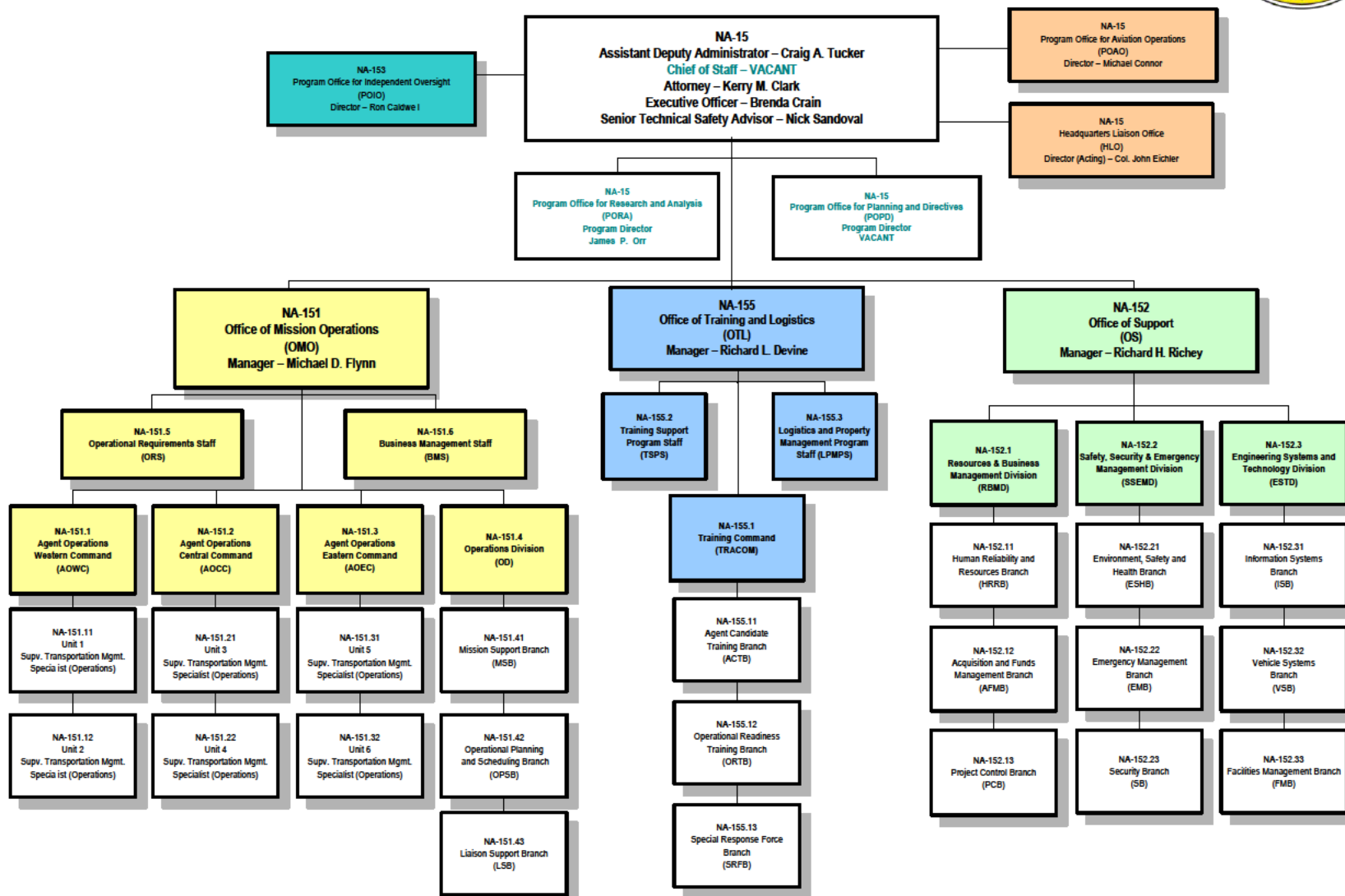
Office of Secure Transportation, NA-15
Craig A. Tucker
Assistant Deputy Administrator

Office of Mission Operations
Michael D. Flynn
Manager

Office of Training and Logistics Command
Richard L. Devine
Manager

Office of Support
Richard H. Richey
Manager

OST ORGANIZATION



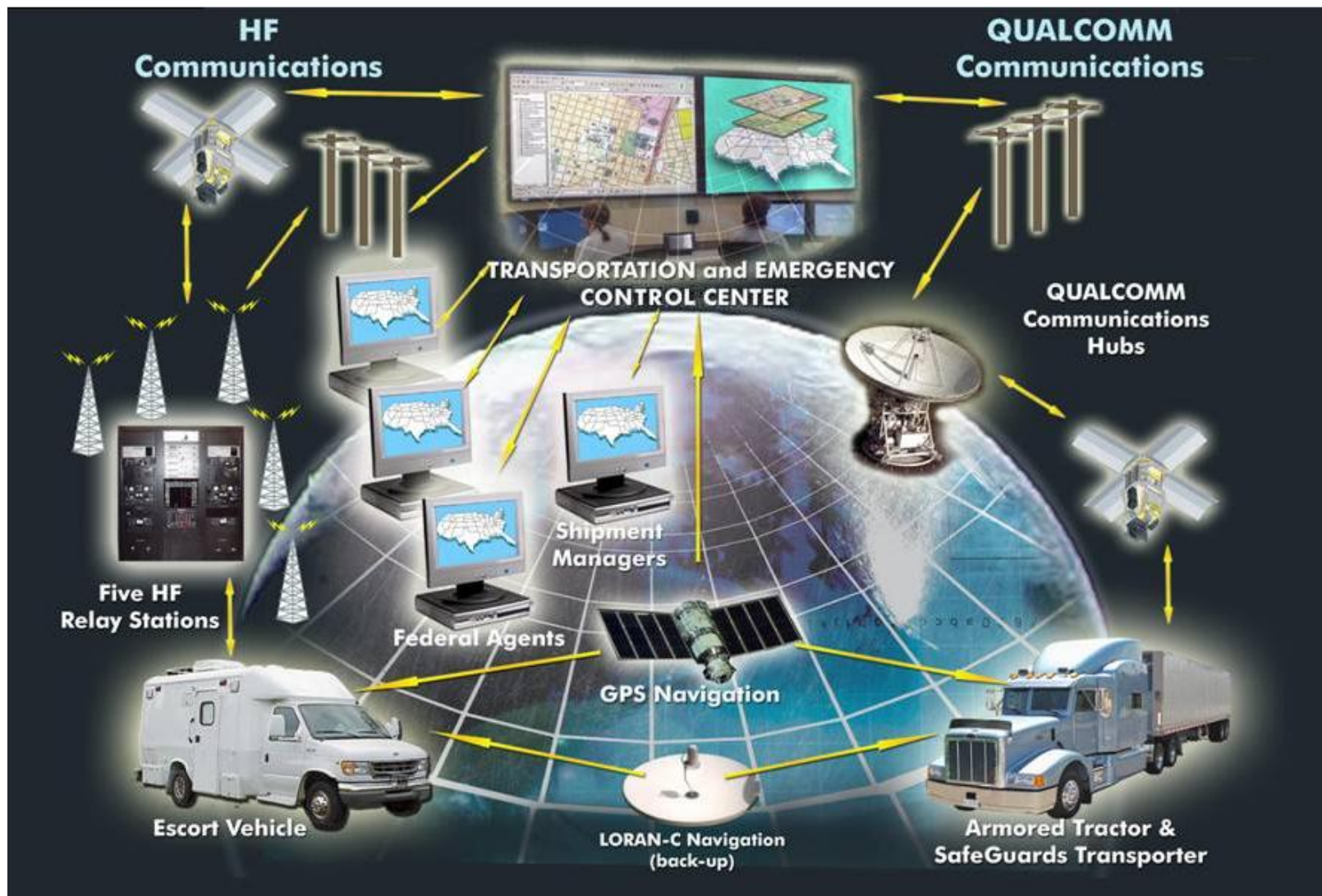
■ **Transportation Command and Control System (TCCS)**

- ❑ Redundant, Multi-Tier Command and Control System Utilizing Multiple Data Paths
- ❑ Real-Time Positioning Capability
- ❑ Continuous, Dynamic Messaging and Communication Capabilities
- ❑ Superior Command and Control Capabilities in Scenarios of Extreme Tactical and Environmental Duress

■ **Supporting Systems & Capabilities**

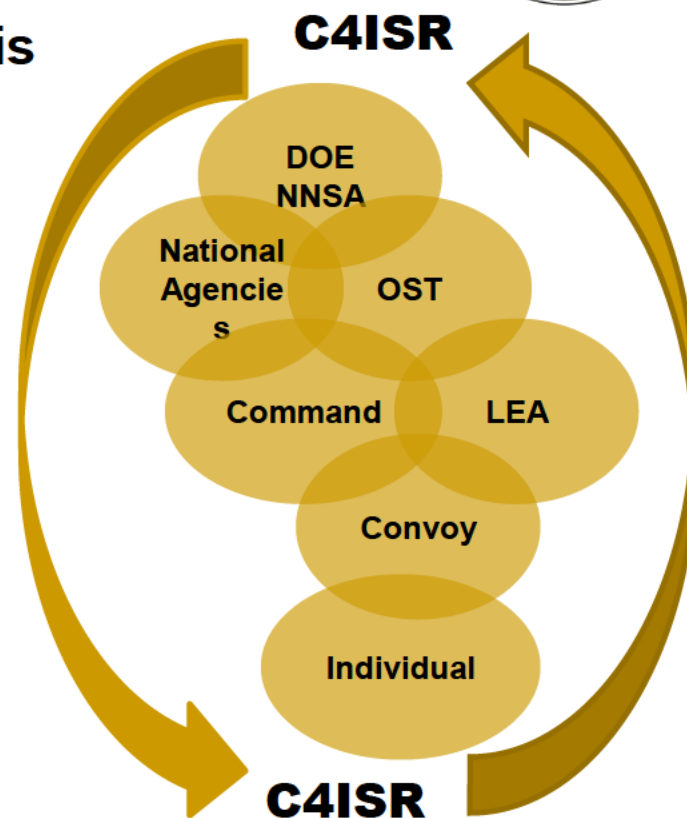
- ❑ Advanced Situational Awareness Technology
- ❑ Intelligence-Driven Decision Support
- ❑ Asset Management and Control

TCCS ARCHITECTURE



Program Office for Research and Analysis

- Focused Intelligence Integration
- Threat Spectrum
- Priority Intelligence Requirements
 - Integration of Adversary and Mission *Courses of Action*
 - Critical Tasks
 - Indicators and Indications
- Named Area of Interest Characterization
- Remain Unpredictable
 - Force Threat into Patterns of Activity
 - Detection and Analysis
 - Chess Match
 - Ruthless Adherence to Deductive Thought Process



Tucker's Laws

- The Initial Results of an Ambush Don't Change
- An Adversary is Most Vulnerable During the Pre-Attack Phase

■ Agent Operations

- ❑ Requirements
- ❑ Retirement
- ❑ Operations

■ Operations

- ❑ Liaison Mission
- ❑ Planning and Scheduling
- ❑ Aviation Operations
- ❑ Command and Control



Agent Commands

■ Federal Agent Requirements

- ❑ Must Possess a DOE Q-Clearance
- ❑ Meet Stringent Mental and Medical Requirements
- ❑ Must Complete:
 - 20-Week Agent Candidate Training
 - 1-Year Probation
 - 3-Year On-the-Job Training
- ❑ Must Qualify Semi-Annually:
 - Physical Requirements
 - Firearms
- ❑ Willingness to Use Deadly Force to Protect Shipment
- ❑ Willingness to Work with Nuclear Explosives

■ Federal Agent Retirement

- ❑ 20-Year Retirement, October 1998



Agent Commands

■ Operations Concept

- ❑ Tractor-Trailer Convoys on Established Routes
- ❑ Three Agents per Vehicle
- ❑ Standard Operating Procedures
- ❑ Centralized Planning and Tracking
- ❑ Decentralized Execution – Convoy Commander is in Charge



Operations

■ Liaison Mission

- ❑ Law Enforcement Agencies
- ❑ State and Local Governments

■ Planning and Scheduling

- ❑ Convoy
- ❑ Aircraft
- ❑ Contractors



Operations

■ Command and Control

- 24/7 Operations Center
- Tracking and Monitoring all OST Ground and Air Activities
 - Convoys
 - Training
 - Aviation
- Real-Time Operational and Emergency Management Response
 - OST Convoys
 - WIPP Convoys
 - Special Customer
- ARG, RAP and JTOT Support/Tracking/Notifications



Safety, Security and Emergency Management

- **Emergency Management Provides an Operational Emergency Preparedness/Readiness Program**
 - ❑ Consequence Assessment and Release Modeling
 - ❑ Training, Drills, Exercises and Emergency Response Organization
 - ❑ NNSA Service Center and NA-40 Assets (RAP, ARG, NEST, JTOT) Support



- **Emergency Operations Center (EOC) and Alternate**
 - ❑ Complete Communication Capabilities (Unclassified and Classified)
 - ❑ Multi-Screen Display, Television and Video Capabilities
 - ❑ Back-Up for DOE/NNSA HQ EOC

- **Aircraft**
- **DOE/NNSA Support**
 - ❑ NNSA/DOE Emergency Response Programs to include RAP, ARG and JTOT
 - ❑ Limited Life Components Stockpile Support
 - ❑ Classified and Hazardous Materials Transportation
 - ❑ OST Mission Support
 - ❑ R&D Support for Labs
 - ❑ Official Travel
 - ❑ Surveillance and Reconnaissance



DC-9 (3)

LR-35 (1)

GIII (1)

Twin Otters (2)

Mission



METL



Analysis



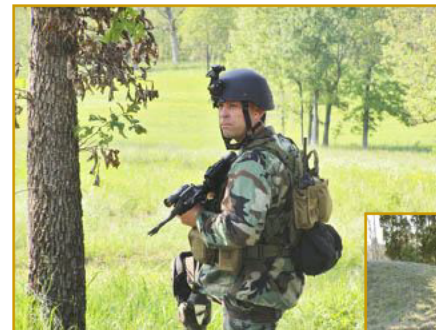
COA



Training

- **Leadership Development**
- **Federal Agent Training**
 - ❑ Curriculum Development
 - ❑ Agent Candidate Training
 - ❑ On-the-Job Training
 - ❑ Operational Readiness Training
 - ❑ Unit Training
 - ❑ Special Response Force
- **Emergency Management**
- **Transportation and Emergency Control Center**
- **Work-for-Others**

OFFICE OF SECURE TRANSPORTATION



Always Confident, Never Comfortable